

2026 TRAILSEEKER

PRODUCT GUIDE





2026 TRAILSEEKER

Subaru is very excited to welcome the all-new Trailseeker to the EV family. Built on a lengthened version of the e-Subaru Global Platform, the Trailseeker has a laser-sharp focus on capability, utility, and everything that draws customers to the Subaru brand. With more cargo space, standard roof rails, standard Symmetrical All-Wheel Drive, X-MODE with Grip Control, 210mm of ground clearance, and a 1,500kg tow rating, there's a lot to get excited for.

Powered by a 74.7 kWh battery and 167 kW electric motors at both axles, the Trailseeker puts down 375 hp to all four wheels, making it the most powerful Subaru ever. Built to support active lifestyles, the Trailseeker joins the Subaru lineup in a very exciting way.



2026 TRAILSEEKER MODEL LINEUP



TOURING

Airbag (driver): Dual-stage deployment
 Airbag (front passenger): Dual-stage deployment with occupant detection system
 Airbag (front seats): Side-impact
 Airbag: Driver's knee
 Airbag: Passenger's knee
 Airbag: Side curtain
 Audio system: 14-inch touch-screen infotainment system
 Audio system: AM/FM/MP3/WMA supported
 Audio system: Integrated steering wheel audio controls
 Audio system: Wireless Apple CarPlay® and Android Auto® functionality
 Badging (rear): SUBARU (backlit)
 Body: Underbody rear diffuser
 Brakes (front): Ventilated discs, dual-piston calipers
 Brakes (rear): Ventilated discs, single-piston calipers
 Brakes: 4-channel/4-sensor/4-wheel Anti-lock Brake System (ABS)
 Brakes: Active Cornering Assist (ACA)
 Brakes: Brake assist system
 Brakes: Brake hold
 Brakes: Electronic Brake-force Distribution (EBD)
 Brakes: Regenerative braking with steering wheel paddle controls
 Camera: Rearview with dynamic guide lines
 Cargo access: Rear liftgate, power with memory function and lock switch
 Cargo area: Tonneau cargo cover
 Charger: Level 2 & DC fast charging
 Climate control: Automatic, dual-zone with ECO mode
 Climate control: Heat pump system
 Connected car system: SubaruConnect™ - Safety Connect (free 10-year trial subscription): Advanced automatic collision notification, Enhanced roadside assistance, SOS emergency service, Stolen vehicle locator, Stolen vehicle immobilizer
 Connected car system: SubaruConnect™ - Remote Connect (free 3-year trial subscription): Horn and lights, Door lock and unlock, Climate control pre-conditioning, Find charging stations
 Connected car system: SubaruConnect™ - Service Connect (free 10-year trial subscription): Maintenance alerts, Vehicle health report

Connected car system: SubaruConnect™ - Drive Connect (subscription available): Cloud-based navigation, Destination assistant, Intelligent assistant
 Connectivity: Bluetooth® mobile phone connectivity with voice activation and Bluetooth® streaming audio
 Connectivity: USB-C ports (dual) in front
 Connectivity: USB-C ports (dual) in rear
 Connectivity: Wireless phone charger in centre console (x2)
 Drivetrain: Subaru Symmetrical All-wheel Drive system (AWD)
 Drivetrain feature: Power and Eco drive modes
 Drivetrain feature: S-Pedal Drive
 Driving assist systems (advanced): DriverFocus®
 Distraction Mitigation System (DMS)
 Driving assist systems (advanced): Reverse Automatic Braking (RAB)
 Driving assist systems: Acceleration Suppression at Low Speed (PKSB system)
 Driving assist systems: Blind Spot Monitor (BSM)
 Driving assist systems: Dynamic radar cruise control (DRCC)
 Driving assist systems: Emergency Driving Stop System (EDSS)
 Driving assist systems: Emergency steering assist (PCS system)
 Driving assist systems: Front Cross Traffic Alert (FCTA)
 Driving assist systems: Intersection collision avoidance support (PCS system)
 Driving assist systems: Lane Change Assist (LCA)
 Driving assist systems: Lane Departure Alert (LDA) with prevention
 Driving assist systems: Lane Tracing Assist (LTA)
 Driving assist systems: Parking Support Brake (PKSB)
 Driving assist systems: Pre-Collision System (PCS)
 Driving assist systems: Rear Cross Traffic Alert (RCTA)
 Driving assist systems: Road Sign Assist (RSA) with speed limiter
 Driving assist systems: Traction Control System (TCS)
 Driving assist systems: Traffic Jam Assist (TJA)**
 Driving assist systems: Vehicle Stability Control (VSC)
 Door mirrors: Power-adjustable, foldable and heated
 eAxe front (output): 167 kW
 eAxe rear (output): 167 kW
 Headlights: LED with Automatic High Beam (AHB)
 Horsepower (peak) (hp): 375
 Interior lighting: Ambient lighting

Instruments: 7-inch colour digital gauge cluster and multi-information display
 Level 3 DC fast charging rate maximum capacity: Up to 150 kWh*
 Parking brake: Electronic with push-button actuation
 Passenger safety: Safe Exist Assist (SEA) warning
 Rearview mirror: Auto-dimming
 Roof rails: Raised profile with tie-down holes
 Seat (driver's): Power-adjustable (10-way including 2-way lumbar)
 Seatbelts (all): Engagement indicator and warning chime
 Seating surfaces: Startex®
 Seats (front): Heated, three settings with auto
 Seats (rear): Contoured bench with flat-folding 60/40-split seatbacks
 Security: Anti-theft system with immobilizer system
 Security: Proximity key with push-button start
 Speakers: 6-speaker system
 Speedometer: Electronically-controlled digital
 Steering: Speed-sensitive, electric-assisted rack-and-pinion
 Steering column: Collapsible
 Steering wheel: Leather-wrapped, oval-shaped
 Steering wheel: Tilt-adjustable and telescoping
 Structure: Advanced ring-shaped reinforcement frame
 Structure: Energy-absorbing crumple zones (front & rear)
 Structure: e-Subaru Global Platform
 Suspension (front): MacPherson-type struts with coil springs and stabilizer bar
 Suspension (rear): Double wishbone with coil springs and stabilizer bar
 Suspension: 4-wheel, fully independent
 Tail lights: LED combination
 Traction battery capacity: 74.7 kWh
 Traction battery type: Lithium-ion
 Visor: Dual, with illuminated mirrors and extension
 Wheels: 18" x 7.5" aluminum alloy, 5-spoke with aerodynamic covers
 Wheels: Lug nuts (washer seat)
 Windshield: Wiper de-icer
 Wiper (rear window): Intermittent and continuous mode with washer
 Wipers (windshield): Rain sensing intermittent with washer, headlight-linked

**Traffic Jam Assist (TJA) only with Drive Connect subscription

* Charging times and capacities are estimated based on ideal charging conditions and infrastructure. As temperatures decrease below 10°C, charging time will increase significantly and charging capacity will decrease significantly. Charging may slow down more than other comparable models in weather conditions below 0°C and may not be possible when the battery temperature drops to around -20°C and below. Amongst others and non-exclusively, drive battery conditions, charger specifications, charging infrastructure and Level 3 DC fast charging fully more than once per day also can negatively affect charging time. See the owner's manual for details.

Product details based on the latest information available at the time of publication and are subject to change without notice or incurring obligation. © 2026 Subaru Canada, Inc.

2026 TRAILSEEKER MODEL LINEUP

LIMITED | Includes all items on Touring and adds/upgrades:

| | |
|--|---|
| Camera: Driver's side exterior mirror-mounted | Door mirrors: Power-adjustable, power-folding and heated |
| Camera: Front-view with guide lines | Driving assist systems: Advanced Park |
| Camera: Panoramic view monitor (360-degree camera) | Exterior lighting: LED puddle lamps |
| Camera: Passenger's side exterior mirror-mounted | Seat (driver's): Memory settings with exterior mirror synchronization, two position |
| Cargo access: Rear liftgate, power (hands-free kick sensor) with memory function and lock switch | Seat (front passenger): Power-adjustable (8-way) |
| Cargo area: 120V outlet in cargo area | Seats (rear outboard): Heated, two settings |
| Door mirrors: Integrated LED turn signals | Speakers: Premium 11-speaker Harman Kardon® system with subwoofer and amplifier |
| Door mirrors: Passenger-side reverse tilt | Steering wheel: Heated, two settings with auto |
| | Wheels: 20" X 7.5" aluminum alloy, 10-spoke, two-tone with machined finish |

PREMIER | Includes all items on Limited and adds/upgrades:

| | |
|---|---|
| Accent stitching: Silver | Rearview mirror: Smart with HomeLink® |
| Camera: Rearview with dynamic guide lines and rear washer | Seats (front): Ventilated, three settings with auto |
| Climate control: Radiant heating | Sunroof: Panoramic fixed glass roof |
| Seating surfaces: Leather | Sunroof: Power retractable shade |
| Hood: Accent, gloss black | |

2026 TRAILSEEKER VEHICLE SPECIFICATIONS

| | | ATP | ALP | APP |
|--|--|-----|-----|-----|
| ELECTRIC POWERTRAIN | | | | |
| Charger: | Level 2 & Level 3 fast charging | ● | ● | ● |
| Charger: | NACS type | ● | ● | ● |
| DC fast charging rate (max.) (kW): | 150 kW | ● | ● | ● |
| Front eAxle (output) (kW): | 167.0 kW | ● | ● | ● |
| Front eAxle (torque) (Nm): | 268.6 Nm | ● | ● | ● |
| Front eAxle components: | Power control unit, motor, differential | ● | ● | ● |
| Horsepower (peak) (hp): | 375 | ● | ● | ● |
| Level 2 AC charging input (kW): | 11 kW | ● | ● | ● |
| Level 2 AC charging time (approx.) (min): | 11 hours @ 32 A | ● | ● | ● |
| Level 3 DC fast charging time (approx.) (min): | 30min @ 150 kW | ● | ● | ● |
| Rear eAxle (output) (kW): | 167 kW | ● | ● | ● |
| Rear eAxle (torque) (Nm): | 268.6 Nm | ● | ● | ● |
| Rear eAxle components: | Power control unit, motor, differential | ● | ● | ● |
| Traction battery (operating temp. range) (°C): | -30 °C to 60 °C | ● | ● | ● |
| Traction battery capacity (kWh): | 74.7 kWh | ● | ● | ● |
| Traction battery feature: | Liquid cooled/heated | ● | ● | ● |
| Traction battery feature: | Pre-conditioning | ● | ● | ● |
| Traction battery type: | Lithium-ion | ● | ● | ● |
| Traction battery voltage (V): | 391 V | ● | ● | ● |
| TRANSMISSION | | | | |
| Drivetrain: | Subaru Symmetrical All-wheel Drive system (AWD) | ● | ● | ● |
| Drivetrain feature: | Downhill Assist Control | ● | ● | ● |
| Drivetrain feature: | Grip Control | ● | ● | ● |
| Drivetrain feature: | Power and Eco drive modes | ● | ● | ● |
| Drivetrain feature: | S-Pedal Drive | ● | ● | ● |
| Drivetrain feature: | X-MODE® (dual-function) | ● | ● | ● |
| Transmission feature: | Gear position display | ● | ● | ● |
| CHASSIS | | | | |
| Brakes: | 4-channel/4-sensor/4-wheel Anti-lock Brake System (ABS) | ● | ● | ● |
| Brakes: | Active Cornering Assist (ACA) | ● | ● | ● |
| Brakes: | Active torque vectoring | ● | ● | ● |
| Brakes: | Auto Vehicle Hold (AVH) | ● | ● | ● |
| Brakes: | Brake assist system | ● | ● | ● |
| Brakes: | Brake override system | ● | ● | ● |
| Brakes: | Electronic Brake-force Distribution (EBD) | ● | ● | ● |
| Brakes: | Power-assisted, dual-diagonal system | ● | ● | ● |
| Brakes: | Regenerative braking with steering wheel paddle controls | ● | ● | ● |
| Brakes (front): | Ventilated discs, dual-piston calipers | ● | ● | ● |
| Brakes (rear): | Ventilated discs, single-piston calipers | ● | ● | ● |
| Minimum turning circle (curb-to-curb) (m): | 11.2 | ● | ● | ● |
| Parking brake: | Electronic with push-button actuation | ● | ● | ● |
| Steering: | Speed-sensitive, electric-assisted rack-and-pinion | ● | ● | ● |

Product details based on the latest information available at the time of publication and are subject to change without notice or incurring obligation. © 2026 Subaru Canada, Inc.

2026 TRAILSEEKER VEHICLE SPECIFICATIONS

| | | ATP | ALP | APP |
|------------------------------------|--|-----|-----|-----|
| CHASSIS (CONTINUED) | | | | |
| Steering ratio: | 14.2:1 | ● | ● | ● |
| Steering turns (lock-to-lock)(m): | 2.8 | ● | ● | ● |
| Structure: | Advanced ring-shaped reinforcement frame | ● | ● | ● |
| Structure: | e-Subaru Global Platform | ● | ● | ● |
| Structure: | Energy-absorbing crumple zones (front and rear) | ● | ● | ● |
| Suspension: | 4-wheel, fully independent | ● | ● | ● |
| Suspension (front): | MacPherson-type struts with coil springs and stabilizer bar | ● | ● | ● |
| Suspension (rear): | Double wishbone with coil springs and stabilizer bar | ● | ● | ● |
| SAFETY & SECURITY | | | | |
| Airbag: | Driver's knee | ● | ● | ● |
| Airbag: | Passenger's knee | ● | ● | ● |
| Airbag: | Side curtain | ● | ● | ● |
| Airbag (driver): | Dual-stage deployment | ● | ● | ● |
| Airbag (front passenger): | Dual-stage deployment with occupant detection system | ● | ● | ● |
| Airbag (front seats): | Side-impact | ● | ● | ● |
| Camera: | Front-view with guide lines | - | - | ● |
| Camera: | Panoramic view monitor (360-degree camera with underbody view) | - | ● | ● |
| Camera: | Rearview with guide lines | ● | ● | ● |
| Child safety: | ISO-FIX/LATCH anchor system (rear seat) | ● | ● | ● |
| Door locks: | Automatic | ● | ● | ● |
| Driver's footrest: | Impact-absorbing | ● | ● | ● |
| Driving assist systems (advanced): | DriverFocus® Distraction Mitigation System (DMS) | ● | ● | ● |
| Driving assist systems (advanced): | EyeSight® driver assist technology | ● | ● | ● |
| Driving assist systems: | Acceleration Suppression at Low Speed (PKSB system) | ● | ● | ● |
| Driving assist systems: | Advanced Park | - | - | ● |
| Driving assist systems: | Blind Spot Monitor (BSM) | ● | ● | ● |
| Driving assist systems: | Cruise control | ● | ● | ● |
| Driving assist systems: | Dynamic radar cruise control (DRCC) | ● | ● | ● |
| Driving assist systems: | Emergency Driving Stop System (EDSS) | ● | ● | ● |
| Driving assist systems: | Emergency steering assist (PCS system) | ● | ● | ● |
| Driving assist systems: | Front Cross Traffic Alert (FCTA) | ● | ● | ● |
| Driving assist systems: | Intersection collision avoidance support (PCS system) | ● | ● | ● |
| Driving assist systems: | Lane Change Assist (LCA) | ● | ● | ● |
| Driving assist systems: | Lane Departure Alert (LDA) with prevention | ● | ● | ● |
| Driving assist systems: | Lane Tracing Assist (LTA) | ● | ● | ● |
| Driving assist systems: | Parking Support Brake (PKSB) | ● | ● | ● |
| Driving assist systems: | Pre-Collision System (PCS) | ● | ● | ● |
| Driving assist systems: | Proactive Driving Assist (PDA) | ● | ● | ● |
| Driving assist systems: | Rear Cross Traffic Alert (RCTA) | ● | ● | ● |
| Driving assist systems: | Road Sign Assist (RSA) with speed limiter | ● | ● | ● |
| Driving assist systems: | Traction Control System (TCS) | ● | ● | ● |
| Driving assist systems: | Traffic Jam Assist (TJA) (subscription required)* | ● | ● | ● |
| Driving assist systems: | Vehicle Dynamics Control (VDC) | ● | ● | ● |

Product details based on the latest information available at the time of publication and are subject to change without notice or incurring obligation. © 2026 Subaru Canada, Inc.

2026 TRAILSEEKER VEHICLE SPECIFICATIONS

| | | ATP | ALP | APP |
|--|--|-----|-----|-----|
| SAFETY & SECURITY (CONTINUED) | | | | |
| Head restraints (front): | Whiplash-reducing, removable, height adjustable | ● | ● | ● |
| Head restraints (rear): | Removable, height-adjustable | ● | ● | ● |
| Passenger safety: | Safe Exit Assist (SEA) warning | ● | ● | ● |
| Pedestrian safety: | Acoustic vehicle alert | ● | ● | ● |
| Seatbelt (driver): | 3-point adaptive with pretensioner, load limiter and locking tongue | ● | ● | ● |
| Seatbelt (front passenger): | 3-point adaptive with pretensioner, load limiter and locking tongue | ● | ● | ● |
| Seatbelts (2 nd row): | 3-point with pretensioners and load limiters (outboard seating positions only) | ● | ● | ● |
| Seatbelts (all): | Engagement indicator and warning chime | ● | ● | ● |
| Seatbelts (front): | Height-adjustable shoulder belt anchors | ● | ● | ● |
| Seatbelts (rear): | 3-point with pretensioners, load limiters and locking tongue (all seating positions) | ● | ● | ● |
| Security: | Anti-theft system with immobilizer system | ● | ● | ● |
| Security: | Proximity key with push-button start and trunk access | ● | ● | ● |
| Steering column: | Collapsible | ● | ● | ● |
| EXTERIOR FEATURES | | | | |
| Antenna: | Shark fin (roof-mounted) | ● | ● | ● |
| Badging (rear): | Black painted | ● | ● | ● |
| Badging (rear): | SUBARU (backlit) | ● | ● | ● |
| Badging (rear): | Symmetrical AWD | ● | ● | ● |
| Body (rocker panels): | Lower cladding, black | ● | ● | ● |
| Body (wheel arches): | Cladding, black | ● | ● | ● |
| Body: | Anti-corrosion treatment | ● | ● | ● |
| Body: | Underbody rear diffuser | ● | ● | ● |
| Bumpers: | Lower cladding, black | ● | ● | ● |
| Cargo access: | Rear liftgate, power with memory function and lock switch | ● | - | - |
| Cargo access: | Rear liftgate, power (hands-free kick sensor) with memory function and lock switch | - | ● | ● |
| Cargo area: | Tonneau cargo cover | ● | ● | ● |
| Charge port location: | Passenger side, front | ● | ● | ● |
| Door handles: | Body colour | ● | ● | ● |
| Door mirrors: | Auto-dimming with approach lighting | ● | ● | ● |
| Door mirrors: | Gloss black | ● | ● | ● |
| Door mirrors: | Integrated LED turn signals | ● | ● | ● |
| Door mirrors: | Passenger-side reverse tilt | - | ● | ● |
| Door mirrors: | Power-adjustable, foldable and heated | ● | - | - |
| Door mirrors: | Power-adjustable, power-folding and heated | - | ● | ● |
| Doors: | Gloss black trim accents | ● | ● | ● |
| Grille: | Active Grille Shutter | ● | ● | ● |
| Grille: | Light-up emblem | ● | ● | ● |
| Headlights: | Fully-automatic | ● | ● | ● |
| Headlights: | Headlight washers (spray only) | ● | ● | ● |
| Headlights: | LED with High-Beam Assist (HBA) | ● | ● | ● |
| Hood: | Accent, black | - | - | ● |
| Roof rails: | Raised profile with tie-down holes | ● | ● | ● |
| Spoiler: | Roofline, integrated brake light | ● | ● | ● |
| Sunroof: | Panoramic fixed glass roof | - | - | ● |

Product details based on the latest information available at the time of publication and are subject to change without notice or incurring obligation. © 2026 Subaru Canada, Inc.

2026 TRAILSEEKER VEHICLE SPECIFICATIONS

| | | ATP | ALP | APP |
|--------------------------------------|--|-----|-----|-----|
| EXTERIOR FEATURES (CONTINUED) | | | | |
| Sunroof: | Power retractable shade | - | - | ● |
| Tail lights: | LED combination | ● | ● | ● |
| Tires: | 235/60 R18 | ● | - | - |
| Tires: | 235/50 R20 | - | ● | ● |
| Tires: | All-Season | ● | ● | ● |
| Wheels: | 18" x 7.5" aluminum alloy, 5-spoke with aerodynamic covers | ● | - | - |
| Wheels: | 20" X 7.5" aluminum alloy, 10-spoke, two-tone with machined finish | - | ● | ● |
| Window trim: | Black surround | ● | ● | ● |
| Window (rear): | Defogger with timer | ● | ● | ● |
| Windows (rear and cargo areas): | Privacy tinted glass | ● | ● | ● |
| Windshield: | Laminated UV protection | ● | ● | ● |
| Windshield: | Wiper de-icer | ● | ● | ● |
| Wiper (rear window): | Intermittent and continuous mode with washer | ● | ● | ● |
| Wipers (windshield): | Rain sensing intermittent with washer, headlight-linked | ● | ● | ● |

| | | | | |
|---------------------------|---|---|---|---|
| SEATING & TRIM | | | | |
| Door handles (interior): | Satin metallic | ● | ● | ● |
| Floor mats: | Carpet | ● | ● | ● |
| Interior trim surfaces: | Soft-touch | ● | ● | ● |
| Seat (driver's): | Memory settings, two position | - | ● | ● |
| Seat (driver's): | Power-adjustable (10-way incl. 2-way lumbar) | ● | ● | ● |
| Seat (front passenger): | Manually adjustable (4-way) | ● | - | - |
| Seat (front passenger): | Power-adjustable (8-way) | - | ● | ● |
| Seating capacity: | 5-passengers | ● | ● | ● |
| Seating surfaces: | Leather | - | - | ● |
| Seating surfaces: | StarTex® | ● | ● | - |
| Seats (front): | Centre console armrest | ● | ● | ● |
| Seats (front): | Heated, three settings w/ auto | ● | ● | ● |
| Seats (front): | Ventilated, three settings w/ auto | - | - | ● |
| Seats (front): | Whiplash-reducing | ● | ● | ● |
| Seats (rear): | Contoured bench with flat-folding 60/40-split seatbacks | ● | ● | ● |
| Seats (rear): | Folding centre armrest with cup holders | ● | ● | ● |
| Seats (rear outboard): | Heated, two settings | - | ● | ● |
| Steering wheel: | Heated | - | ● | ● |
| Steering wheel: | Leather-wrapped, oval-shaped | ● | ● | ● |
| Steering wheel: | Tilt-adjustable and telescoping | ● | ● | ● |

| | | | | |
|-------------------------------|---|---|---|---|
| AUDIO & TECHNOLOGY | | | | |
| Audio system: | 14.0-inch touch-screen infotainment system | ● | ● | ● |
| Audio system: | Integrated steering wheel audio controls | ● | ● | ● |
| Audio system: | Wireless Apple CarPlay® and Android Auto™ functionality | ● | ● | ● |
| Connected car system: | SubaruConnect™ | ● | ● | ● |
| Connectivity: | USB-C (x1) and USB-C (x2) in rear | ● | ● | ● |
| Connectivity: | Bluetooth® mobile phone connectivity with voice activation and Bluetooth® streaming audio | ● | ● | ● |
| Connectivity: | Wireless phone charger in centre console (dual) | ● | ● | ● |

Product details based on the latest information available at the time of publication and are subject to change without notice or incurring obligation. © 2026 Subaru Canada, Inc.

2026 TRAILSEEKER VEHICLE SPECIFICATIONS

| | | ATP | ALP | APP |
|---|---|-----|-----|-----|
| AUDIO & TECHNOLOGY (CONTINUED) | | | | |
| Speakers: | 6-speaker system | ● | - | - |
| Speakers: | Premium 11-speaker Harman Kardon® system with subwoofer and amplifier | - | ● | ● |
| SubaruConnect™ features: | Drive Connect (subscription available) | ● | ● | ● |
| SubaruConnect™ features: | Drive Connect – Cloud-based navigation | ● | ● | ● |
| SubaruConnect™ features: | Drive Connect – Intelligent assistant | ● | ● | ● |
| SubaruConnect™ features: | Drive Connect – Remote destination | ● | ● | ● |
| SubaruConnect™ features: | Remote Connect (free 3-year trial subscription) | ● | ● | ● |
| SubaruConnect™ features: | Remote Connect – Charge schedule/reminder/tracker | ● | ● | ● |
| SubaruConnect™ features: | Remote Connect – Climate control pre-conditioning | ● | ● | ● |
| SubaruConnect™ features: | Remote Connect – Digital Key | ● | ● | ● |
| SubaruConnect™ features: | Remote Connect – Door lock and unlock | ● | ● | ● |
| SubaruConnect™ features: | Remote Connect – Find charging stations | ● | ● | ● |
| SubaruConnect™ features: | Remote Connect – Horn and lights | ● | ● | ● |
| SubaruConnect™ features: | Safety Connect (free 10-year trial subscription) | ● | ● | ● |
| SubaruConnect™ features: | Safety Connect – Advanced automatic collision notification | ● | ● | ● |
| SubaruConnect™ features: | Safety Connect – Enhanced roadside assistance | ● | ● | ● |
| SubaruConnect™ features: | Safety Connect – SOS emergency service | ● | ● | ● |
| SubaruConnect™ features: | Safety Connect – Stolen vehicle immobilizer | ● | ● | ● |
| SubaruConnect™ features: | Safety Connect – Stolen vehicle recovery | ● | ● | ● |
| SubaruConnect™ features: | Service Connect (free 10-year trial subscription) | ● | ● | ● |
| SubaruConnect™ features: | Service Connect – Enhanced service appointment scheduler | ● | ● | ● |
| SubaruConnect™ features: | Service Connect – Maintenance alerts | ● | ● | ● |
| SubaruConnect™ features: | Service Connect – Vehicle health report | ● | ● | ● |
| COMFORT & CONVENIENCE | | | | |
| Climate control: | Automatic, dual-zone w/ECO mode | ● | ● | ● |
| Climate control: | Heat pump system | ● | ● | ● |
| Climate control: | Radiant heating | - | - | ● |
| Climate control: | Rear vents (centre console) | ● | ● | ● |
| Cup holders (front): | Console-integrated (2) | ● | ● | ● |
| Cup holders (front): | Door-integrated (2) | ● | ● | ● |
| Cup holders (rear): | Console-integrated (2) | ● | ● | ● |
| Interior lighting: | Ambient lighting | ● | ● | ● |
| Interior lighting: | Automatic off delay | ● | ● | ● |
| Interior lighting: | Cargo area light, LED | ● | ● | ● |
| Interior lighting: | Door courtesy lights (front) | ● | ● | ● |
| Interior lighting: | Reading lights (2 nd row, LED) | ● | ● | ● |
| Interior lighting: | Reading lights (front, LED) | ● | ● | ● |
| Interior lighting: | Welcome lighting | ● | ● | ● |
| Power outlet: | 12V in centre console | ● | ● | ● |
| Power outlet: | 120V in cargo area | ● | ● | ● |
| Rearview mirror: | Auto-dimming | ● | - | - |
| Rearview mirror: | Auto-dimming with HomeLink® | - | ● | - |
| Rearview mirror: | Smart with HomeLink® | - | - | ● |

Product details based on the latest information available at the time of publication and are subject to change without notice or incurring obligation. © 2026 Subaru Canada, Inc.

2026 TRAILSEEKER VEHICLE SPECIFICATIONS

| | | ATP | ALP | APP |
|--|----------------------------------|-----|-----|-----|
| COMFORT & CONVENIENCE (CONTINUED) | | | | |
| Storage: | Centre console (lower) | ● | ● | ● |
| Storage: | Centre console armrest | ● | ● | ● |
| Storage: | Door compartments | ● | ● | ● |
| Storage: | Seatback pocket (passenger) | ● | ● | ● |
| Storage: | Seatback pockets (front) | ● | ● | ● |
| Visor: | Dual, with mirrors and extension | ● | ● | ● |
| Windows (front and rear): | Auto up/down | ● | ● | ● |

| | | | | |
|--------------------|---|---|---|---|
| INSTRUMENTS | | | | |
| Instrument panel: | Black trim accents | ● | ● | ● |
| Instruments: | 7-inch colour digital gauge cluster and multi-information display | ● | ● | ● |
| Speedometer: | Electronically-controlled digital | ● | ● | ● |

MEASUREMENTS

| | ATP | ALP | APP |
|---|-----|-----|-----|
| ECONOMY | | | |
| All-electric range (AER) (km) | TBD | TBD | TBD |
| Electric only (Comb) (L _e /100 km) | TBD | TBD | TBD |

| | | | |
|---|-------|-------|-------|
| GENERAL WEIGHTS | | | |
| Curb weight (kg) | 2,015 | 2,045 | 2,060 |
| Gross Vehicle Weight Rating (GVWR) (kg) | 2,560 | 2,560 | 2,560 |
| Maximum roof rail load, Dynamic (kg) | 80 | 80 | 80 |
| Maximum roof rail load, Static (kg) | 317 | 317 | 317 |

| | | | |
|---|-------|-------|-------|
| TOWING CAPACITY †Please review Owner's Manual for details. | | | |
| Towing capacity (kg): Maximum weight with trailer brakes† | 1,587 | 1,587 | 1,587 |
| Tongue weight (kg): Maximum | 158 | 158 | 158 |

| | | | |
|-------------------------------|-----|-----|-----|
| PERFORMANCE | | | |
| Performance: 0-100 km/h (sec) | 4.4 | 4.4 | 4.4 |
| Top speed (km/h) | 180 | 180 | 180 |

** Based on Natural Resources Canada's (NRCAN) approved guidelines. Refer to NRCAN's Fuel Consumption Guide available at <https://fcr-ccc.nrcan-mcan.gc.ca/en> for more information. Full battery charge and ideal conditions are required. Figures will vary based, amongst others and non-exclusively, on driving and charging habits, speed, accessory use, weather and temperature, battery age, vehicle condition, road condition and other factors. In sub ideal conditions, figures may worsen by more than 50%. Battery capacity decreases with time and use which will further reduce range. See the owner's manual or NRCAN's Fuel Consumption Guide for details.

Product details based on the latest information available at the time of publication and are subject to change without notice or incurring obligation. © 2026 Subaru Canada, Inc.

2026 TRAILSEEKER VEHICLE SPECIFICATIONS

| | ATP | ALP | APP |
|--------------------------------|-------|-------|-------|
| EXTERIOR | | | |
| Approach angle (deg): | TBD | TBD | TBD |
| Departure angle (deg): | TBD | TBD | TBD |
| Ground clearance (mm): Minimum | 210 | 210 | 210 |
| Height (mm) | 1,675 | 1,675 | 1,675 |
| Length (mm) | 4,845 | 4,515 | 4,515 |
| Ramp breakover angle (deg): | TBD | TBD | TBD |
| Track (mm): Front | 1,600 | 1,600 | 1,600 |
| Track (mm): Rear | 1,610 | 1,610 | 1,610 |
| Wheelbase (mm) | 2,850 | 2,750 | 2,750 |
| Width (mm): Body | 1,860 | 1,870 | 1,870 |
| Width (mm): Mirrors extended | 2,118 | 2,117 | 2,117 |
| Width (mm): Mirrors folded | 1,871 | 1,870 | 1,870 |

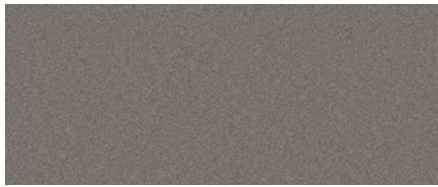
| | | | |
|---------------------------|-------|-------|-------|
| INTERIOR | | | |
| EPA passenger volume (L) | 2,760 | 2,760 | 2,724 |
| Headroom (mm): Front | 986 | 986 | 980 |
| Headroom (mm): Rear | 965 | 965 | 941 |
| Hip room (mm): Front | 1,383 | 1,383 | 1,383 |
| Hip room (mm): Rear | 1,173 | 1,173 | 1,173 |
| Legroom (mm): Front | 1,070 | 1,070 | 1,070 |
| Legroom (mm): Rear | 897 | 897 | 897 |
| Shoulder room (mm): Front | 1,474 | 1,474 | 1,474 |
| Shoulder room (mm): Rear | 1,398 | 1,398 | 1,398 |

| | | | |
|---------------------------------------|-------|-------|-------|
| CARGO AREA | | | |
| Cargo floor length (mm): Seats up | 1,094 | 1,094 | 1,094 |
| Cargo liftover height (mm) | TBD | TBD | TBD |
| Cargo space height (mm) | 926 | 926 | 900 |
| Cargo volume (L): Seats folded | 2,095 | 2,095 | 2,033 |
| Cargo volume (L): Seats up | 886 | 886 | 860 |
| EPA trunk volume (L) | TBD | TBD | TBD |
| Liftgate opening (mm): Height | 767 | 767 | 767 |
| Liftgate opening (mm): Width, lower | 985 | 985 | 985 |
| Liftgate opening (mm): Width, maximum | 1,074 | 1,074 | 1,074 |
| Liftgate opening (mm): Width, upper | 927 | 927 | 927 |
| Width between wheel wells (mm) | 1,007 | 1,007 | 1,007 |

Product details based on the latest information available at the time of publication and are subject to change without notice or incurring obligation. © 2026 Subaru Canada, Inc.

2026 TRAILSEEKER PAINT / UPHOLSTERY / WHEELS

EXTERIOR COLOURS



Brilliant Bronze Metallic



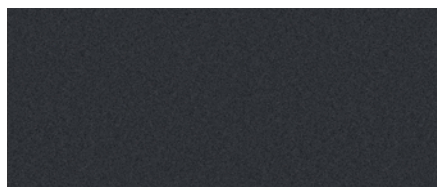
Crystal Black Silica



Crystal White Pearl

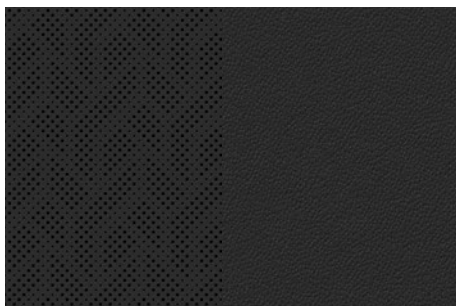


Daybreak Blue Pearl



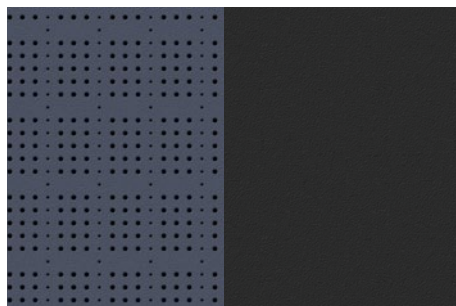
Magnetite Grey Metallic

UPHOLSTERY



Black StarTex®

(Touring, Limited)



Blue and black Leather

(Premier)

WHEELS



**18" x 7.5" aluminum alloy, 5-spoke
with aerodynamic covers**

(Touring)



**20" x 7.5" aluminum alloy, 10-spoke, two-tone
with machined finish**

(Limited, Premier)

Product details based on the latest information available at the time of publication and are subject to change without notice or incurring obligation. © 2026 Subaru Canada, Inc.

2026 TRAILSEEKER VEHICLE ORDERING GUIDE

VEHICLE PRICING

| MODEL | DRIVETRAIN | MOTOR (FRONT / REAR) | MODEL CODE | MSRP | EVP* |
|----------------|------------|-------------------------|------------|-----------------|------------|
| Touring | AWD | 167 KW / 167 KW | T2E ATP | \$54,995 | TBD |
| Limited | AWD | 167 KW / 167 KW | T2E ALP | \$57,995 | TBD |
| Premier | AWD | 167 KW / 167 KW | T2E APP | \$60,995 | TBD |

ALL PRICES ALONG WITH SPECIFICATIONS ARE SUBJECT TO CHANGE WITHOUT NOTICE. THE DEALER MAY SELL BELOW SUGGESTED RETAIL WITHOUT FEAR OF RECRIMINATION FROM SUBARU CANADA, INC. MSRP SHOWN EXCLUDES AIR CONDITIONING SURCHARGE, INLAND FREIGHT AND PRE-DELIVERY CHARGES. MSRP DOES NOT INCLUDE APPLICABLE TAXES.

*Estimated Vehicle Price includes MSRP/Freight PDI/AC charge/maximum Dealer fees/maximum other fees and charges, and excludes taxes, license, insurance and registration. Dealer fees/other fees and charges vary by region and dealer. Dealer may sell for less.

COLOUR AVAILABILITY

| | | TOURING | LIMITED | PREMIER |
|---------------------------|-------------|-----------|-----------|-----------|
| EXTERIOR COLOUR | COLOUR CODE | T2E ATP | T2E ALP | T2E APP |
| Brilliant Bronze Metallic | CD | - | 20 | 80 |
| Crystal Black Silica | 4S | 20 | 20 | 80 |
| Crystal White Pearl | 1X | 20 | 20 | 80 |
| Daybreak Blue Pearl | DC | - | 20 | 80 |
| Magnetite Grey Metallic | 8Y | 20 | 20 | 80 |
| SEATING SURFACES | | StarTex® | StarTex® | Leather |

20 : Black **80** : Blue & Black

Product details based on the latest information available at the time of publication and are subject to change without notice or incurring obligation. © 2026 Subaru Canada, Inc.