

# SUBARU VEHICLE LINE 2018



**SUBARU**

*Confidence in Motion*



**BRZ**  
**CROSSTREK**  
**FORESTER**  
**IMPREZA**  
**LEGACY**  
**OUTBACK**  
**WRX**  
**WRX STI**



**SUBARU**

*Confidence in Motion*



For over 40 years, Subaru vehicles have resonated with Canadian drivers. This should come as little surprise. Our ever-changing weather has the capacity to keep us guessing at all times. Our landscape is equally varied, from the rugged beauty of the coastal towns, to the wide-open expanse of the Prairies, to the concrete corridors of our cities. In fact, if you were to pick just one country that called for all-road/all-weather capability, this would be that country. Subaru is a proud Japanese manufacturer of automobiles – but our connection to Canada and its drivers runs as deep as the Atlantic, Pacific and Arctic Oceans combined.



Best Mainstream Brand



Best Retained Value 'Overall Brand' Award

# IMPREZA



## RESTLESS HEART, RIGHTEOUS RIDE

The **2018 Subaru Impreza** raises the bar in the compact segment, striking a chord with drivers who reject compromise at every turn. The new Subaru Global Platform generates more interior space, improved handling and greater safety for both the 4-door and 5-door models. The SUBARU BOXER engine creates efficient power and Subaru Symmetrical Full-Time AWD ensures that power gets to where it's needed. This generation of the Impreza also packs a bigger punch with more standard features for the same low base price. Never settle, always move forward.

**SYMMETRICAL AWD**



(with optional EyeSight® and specific headlights)



Best Compact Car



## THE WORLD'S FIRST SPORT UTILITY SEDAN (SUS)

If you're looking for a vehicle with all-road/all-weather capability, interior space and all-around versatility, common thinking suggests that you need an SUV. Welcome to uncommon thinking – and welcome to the **2018 Subaru Legacy**. Redesigned for the new model year, this mid-size superstar showcases proven Subaru core technology, as well as a sportier exterior design, a refreshed passenger cabin and enhanced safety systems. All of these qualities work together, creating a car that is engaging, value-packed and decidedly uncommon.

**SYMMETRICAL AWD**



(with optional EyeSight® and specific headlights)



# LEGACY

## ENTIRELY REENGINEERED, STILL UP FOR ANYTHING

The name is the same, but everything else has changed: The **2018 Subaru Crosstrek** is all-new from the ground up, inside and out and top to bottom. The changes include a new platform and a new suspension system. New transmissions. A new SUBARU BOXER engine with increased power and improved fuel-efficiency. A redesigned exterior. And a more spacious, comfortable and connected passenger cabin. Already a class-leader, the all-new Crosstrek is reengineered for even more confident capability, in the city and on the open road.

**SYMMETRICAL  
AWD**



(with optional EyeSight® and specific headlights for vehicles built after October 2017)

**Best Retained Value  
Compact Car Segment**

**Best SubCompact Utility**



# CROSTREK

## OUTBACK



## EQUIPPED FOR LIFE'S AUTHENTIC ADVENTURES

The redesigned **2018 Subaru Outback** is more rugged and more refined than ever before. All the great qualities of the previous model – the all-weather/all-road capability, superior driving dynamics and tremendous versatility – are back for more adventurous action. But this inspired SUV alternative also features a revised exterior with a new front bumper, front grille, rear bumper, aerodynamic side mirrors and hawk-eye-shaped LED headlights. Meanwhile, the redesigned passenger cabin incorporates higher-grade materials, greater connectivity and updated infotainment systems. All told, the new Outback is more Outback than ever before.

**SYMMETRICAL  
AWD**



(with optional EyeSight® and specific headlights for vehicles built after September 2017)

**Best Midsize Utility - 2 Row**

## BUILT FOR ALL LIFE'S RALLIES

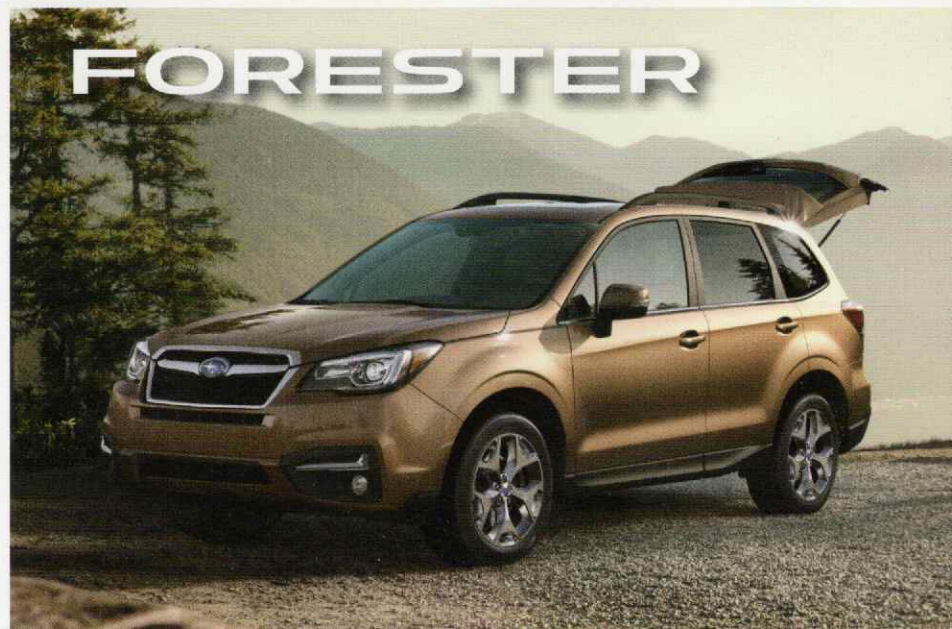
The **2018 Subaru Forester** boasts an unbeatable combination of all-road/all-weather capability, superior reliability, advanced safety features, exceptional value and sheer driving pleasure. The legendary Subaru Symmetrical Full-Time AWD is augmented here by X-MODE, a system that gives drivers more control when road conditions are more challenging. The two SUBARU BOXER engines available are lightweight, responsive and frugal, delivering competitive fuel-efficiency among compact SUVs with full-time AWD. No matter which direction your life takes, the Subaru Forester is ready to follow right along.

**SYMMETRICAL  
AWD**



(with optional EyeSight® and specific headlights)

**2017 CANADIAN UTILITY  
VEHICLE OF THE YEAR**



## FORESTER



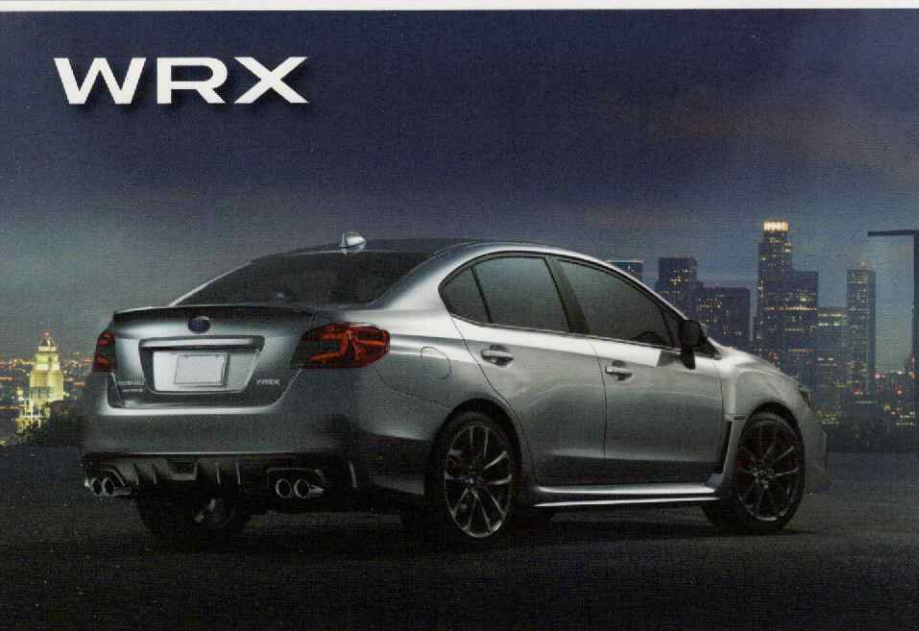
# BRZ



## URNS HEADS, CARVES CORNERS

The **2018 Subaru BRZ** forges its own path with an ultra-low centre of gravity, sport-tuned suspension system and classic front-engine/rear-wheel drive layout. The result: prodigious balance, razor-sharp handling and smile-inducing fun. Aided and abetted by the potent response of the SUBARU BOXER engine and the driver-focused cockpit, the BRZ is a not-so-gentle reminder of everything you love about driving. On the other hand, comfort, convenience and connectivity are also baked right in – just for those rare times when the next corner does not top your to-do list.

# WRX



## ENHANCED CONTROL, UNCONTESTED CONFIDENCE

The **2018 Subaru WRX** – the performance sedan for the serious enthusiast – is now more menacing on the outside, more refined on the inside and more capable throughout. The engineering has been honed to deliver greater response, sharper handling and unmatched levels of control. The 6-speed manual transmission is strengthened. The suspension system is fine-tuned for greater precision. And the passenger cabin features sportier accents, multimedia options galore and a surprising degree of everyday versatility. Consider any stretch of road your personal playground.

**SYMMETRICAL  
AWD**



(with optional EyeSight® and specific headlights)



**Best Sports Car**

## ENGINEERED TO THE NTH DEGREE

The **2018 Subaru WRX STI** is here – and it's more desirable than ever. The high-output turbocharged SUBARU BOXER engine and Subaru Symmetrical Full-Time AWD return for more action. The new electronic Driver Controlled Centre Differential (DCCD) delivers greater control and precision. New 6-caliper front brakes and dual-caliper rear brakes from Brembo combined with ventilated cross-drilled rotors create even more stopping power. And available 19-inch lightweight aluminum alloy wheels with Yokohama performance tires generate unrivalled handling. End of story, continuation of legend.

**SYMMETRICAL  
AWD**



**Best Sports Car**

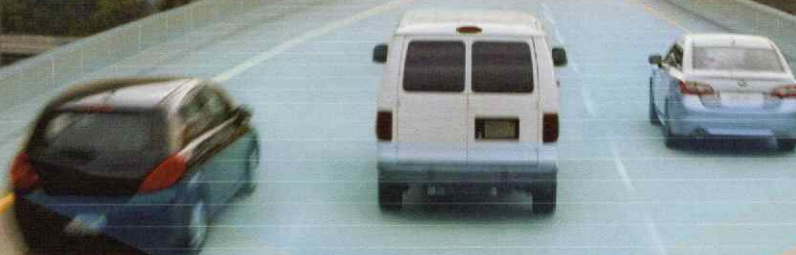
# WRX STI





# EyeSight\*

Driver Assist Technology



## OUR VISION, YOUR SAFETY

The Subaru EyeSight® Driver Assist Technology employs a pair of cameras mounted over the rearview mirror to detect objects in the road ahead and monitor driver actions. If a potentially hazardous situation arises, the system automatically initiates measures to reduce the severity of a collision or avoid the collision entirely, helping ensure the safety of you, your passengers and others around you.

Now in its third generation, this award-winning technology features significantly increased viewing angles, improved recognition accuracy and enhanced steering assist control. The four distinct systems that are informed by the EyeSight® technology are Adaptive Cruise Control, Pre-collision Throttle Management, Lane Departure and Sway Warning, and Lane Keep Assist.

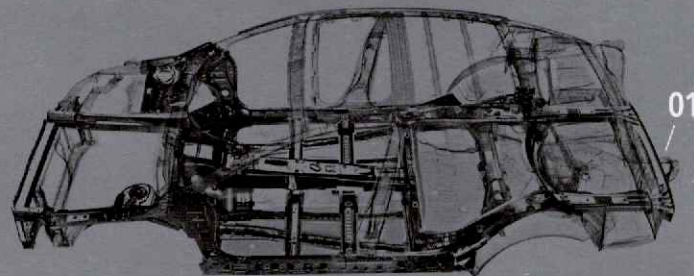
# CONFIDENCE IN MOTION

The Subaru philosophy and brand statement, **Confidence in Motion**, speaks to who we are, what we believe and where we intend to go. Not coincidentally, it also speaks to who our customers are and why they choose to drive a Subaru. Confidence has been a key ingredient in every Subaru model ever built and the meaning behind this brand statement is the heart and soul of our company. Add to the mixture plenty of passion and you have a line of vehicles engineered to deliver more of what customers want and what they need.

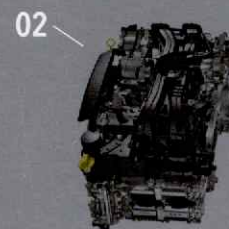
Our vehicles benefit from over 50 years of experience in developing the **SUBARU BOXER engine**. They possess genuine all-road/all-weather capability, the result of over 40 years of fine-tuning the **Subaru Symmetrical Full-Time AWD** system. They deliver world-class safety standards through innovations such as the all-new **Subaru Global Platform** and the award-winning **Subaru EyeSight® Advanced Driver Assist System**. And they represent an inspired blend of performance, reliability, versatility and Adventurous spirit – a combination that drives **Confidence in Motion**.

## SUBARU CORE TECHNOLOGY

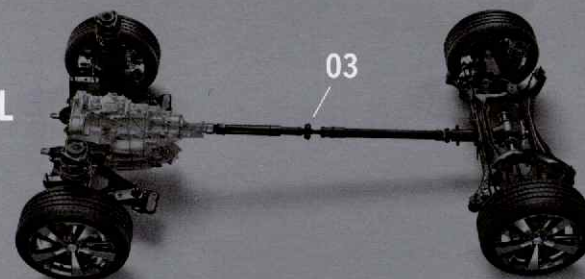
### 01 | SUBARU GLOBAL PLATFORM



### 02 | SUBARU BOXER® ENGINE



### 03 | SUBARU SYMMETRICAL FULL-TIME AWD



**SUBARU**  
[www.subaru.ca](http://www.subaru.ca)

To learn more about this confidence-inspiring line-up of vehicles, please contact your local Subaru dealer.

All illustrations, specifications, features and photographs contained in this brochure are based on product information available at the time of its printing, and may not be completely accurate following its publication. Colours shown may vary due to reproduction variations in the printing process, and some vehicle parts cannot be shown in certain photographs. Subaru Canada, Inc. reserves the right to discontinue or make changes at any time, without notice or incurring obligations, to colours, materials, equipment, accessories, features, specifications and models, or to change their prices. Some models shown may be from international markets and are not available in Canada, or they may be shown with equipment or accessories that are optional (at extra cost) or only available in certain combinations, or they may be subject to product delays or not be available in Canada. Please visit [www.subaru.ca](http://www.subaru.ca) for the latest information and specifications. For complete details on product updates and warranties, please contact your Subaru dealer. Subaru, SUBARU BOXER, BRZ, Crosstrek, Forester, Impreza, Legacy, Outback, WRX, WRX STI and Lineartronic are registered trademarks of Subaru Corporation. Confidence in Motion and STARLINK are trademarks of Subaru Corporation. Aha is a trademark of Harman International Industries, Inc. Bluetooth is a registered trademark of Bluetooth SIG, Inc. America. Android Auto is a trademark of Google LLC. CarPlay is a trademark of Apple Inc. Apple, iPhone and iPod are registered trademarks of Apple Inc. "SiriusXM", "Sirius", "XM", "SiriusXM Traffic", "SiriusXM Travel Link" and the SiriusXM logo, channel names and logos are trademarks of SiriusXM Radio Inc. and are used under license by SiriusXM Canada Inc. Subscriptions to SiriusXM Canada are subject to the SiriusXM Canada Customer Agreement and other terms and conditions. Printed in Canada. © 2017 Subaru Canada, Inc. 2018 model year.

Environmental Management System (EMS) ISO 14001:2004 certified by SGS.



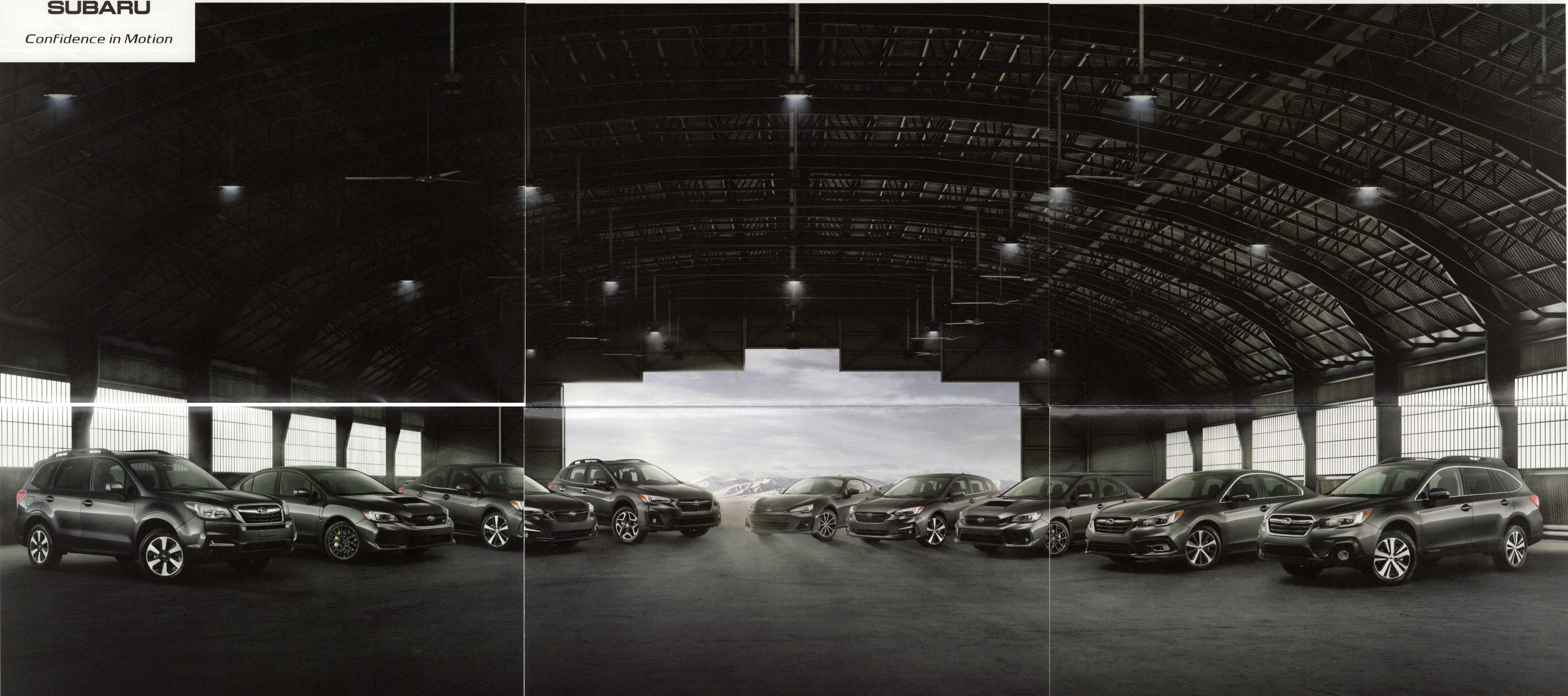
This brochure was printed on FSC® certified grade that utilizes environmentally friendly, chlorine-free papermaking techniques. FSC® (Forest Stewardship Council®) is an international organization that brings people together to find solutions that promote responsible management of the world's forests. It was also produced using a "Green Printing Process" which includes vegetable-based inks that make this brochure fully recyclable leaving no harmful residue. Please recycle.

# SUBARU VEHICLE LINE 2018



**SUBARU**

*Confidence in Motion*



**THE MOST DRIVER-FOCUSED,  
CONFIDENCE-INSPIRING LINE  
OF VEHICLES IN SUBARU HISTORY.**