






WHAT'S NEW?

The Outback is all new for the 2010 model year. The Outback is taller and wider than ever before, allowing for greater versatility and passenger volume. A 6-speed manual transmission and Lineartronic™ CVT (Continuously Variable Transmission) on models equipped with the 2.5-litre naturally aspirated engine help the Outback achieve excellent fuel economy despite its larger dimensions. For even more power, the 3.6-litre, 6-cylinder engine from the Tribeca replaces the outgoing model's 3.0-litre, 6-cylinder engine.

MODEL	SELECT NEW OR REVISED FEATURES (see specifications for complete list)
<p>All models</p>	<ul style="list-style-type: none"> • Fully redesigned exterior and interior • All-new larger platform with more interior volume and cargo volume • 6-speed manual transmission, available Lineartronic™ CVT (Continuously Variable Transmission) with manual mode, including paddle shift controls (2.5 NA engine) • Electronic parking brake with driver-selectable Hill Holder system • Brake Assist • Steering wheel-integrated audio controls • Fully automatic headlights • Instrument cluster-mounted ECO gauge • Integrated swing-in-place crossbars • 10-way power-adjustable driver's seat, including power lumbar support • Reclining rear seats
<p>Outback PZEV (replaces 2.5i)</p> 	<ul style="list-style-type: none"> • 17-inch alloy wheels • Body colour mirrors • AM/FM/CD/WMA 4-speaker sound system
<p>Outback 2.5i Sport (replaces PZEV Plus)</p> 	<ul style="list-style-type: none"> • Windshield wiper de-icer • Auto-dimming rearview mirror with compass • MediaHub for iPod® and USB integration • Driver's auto-up power window • blueconnect® Bluetooth® hands-free system (voice-activated) <p>➔ Limited Package Lineartronic™ CVT</p> <p>↓</p> <p>Available Multimedia Option:</p> <ul style="list-style-type: none"> • Voice-activated navigation • Voice-activated Bluetooth® • Rear-view camera • Bluetooth® streaming audio
<p>Outback 3.6R</p> 	<ul style="list-style-type: none"> • Larger, more powerful, 3.6-litre, 6-cylinder SUBARU BOXER engine • Larger front and rear disc brakes • Standard premium cloth interior • Manual climate control • AM/FM/CD/WMA 4-speaker sound system <p>➔ Limited Package</p> <p>↓</p> <p>Available Multimedia Option:</p> <ul style="list-style-type: none"> • Voice-activated navigation • Voice-activated Bluetooth® • Rear-view camera • Bluetooth® streaming audio

Product details based on the latest information available at the time of publication and are subject to change without notice or incurring obligation. © 2009 Subaru Canada, Inc.

MODEL OVERVIEW 2010 OUTBACK



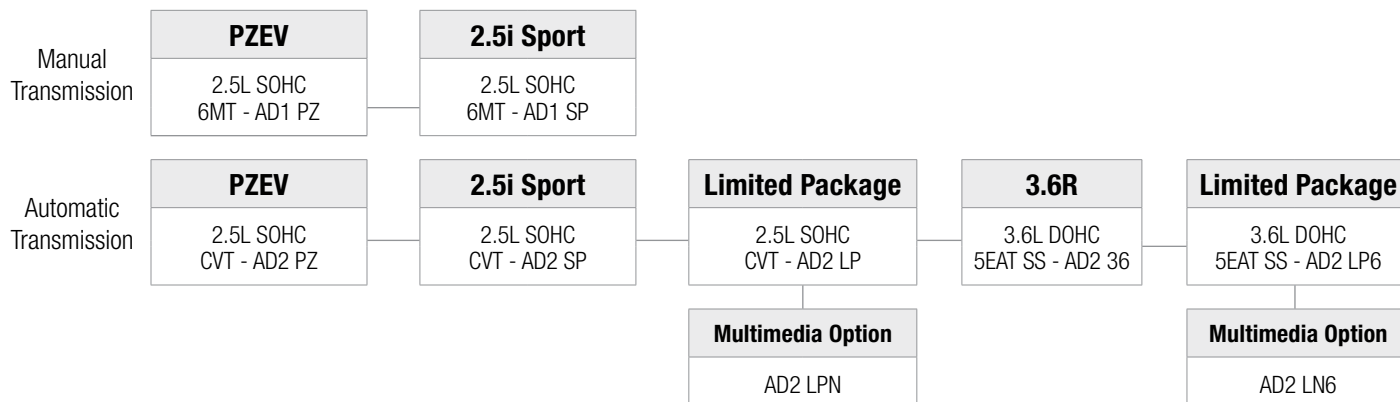
- 1** The side panel of the Outback is now one piece, compared to five pieces for the previous generation. This increases precision, improves quality and reduces weight.
- 2** Innovative raised-profile roof rails with integrated swing-in-place crossbars afford an SUV-like profile. When not used, the crossbars swing aside to reduce fuel consumption and lower wind noise.
- 3** Despite being 20 mm shorter than the previous generation, the 2010 Outback has a 70 mm longer wheelbase for a smoother ride.
- 4** Dark lower cladding emphasizes Outback's impressive ground clearance, which is greater than many conventional SUVs.
- 5** Aggressive wheel arches give the Outback an SUV-like stance, and draw the eye to the standard 17-inch aluminum wheels.
- 6** Standard front fog lights add to the Outback's go-anywhere appeal and provide crisp illumination in adverse conditions.
- 7** Standard fully automatic headlamps are standard on all Outback models for added active safety, day or night.
- 8** The Outback's grille closely resembles Tribeca's grille, reaffirming Outback's position as the SUV alternative.



- 1** The 2010 Outback offers right-sized versatility with more cargo volume with the rear seats up than the previous generation.
- 2** Drivers can keep both hands on the wheel with an available blueconnect® Bluetooth® hands-free system and voice-activated navigation system with integrated Bluetooth® technology.
- 3** Every Outback is equipped with a 10-way power-adjustable driver's seat, including power lumbar support. A comfortable driver is an alert driver.
- 4** The design of the front seat has been optimized to reduce whiplash in a rear collision, negating the need for anti-whiplash head restraints, allowing for a more comfortable design.
- 5** A MediaHub for iPod® and USB integration is standard on most models. Now an iPod® or USB can be controlled directly through the audio system and steering wheel controls.
- 6** Rear seat occupants can easily get comfortable with standard reclining rear seats and more leg, shoulder and hip room as compared to the previous generation.

Product details based on the latest information available at the time of publication and are subject to change without notice or incurring obligation. © 2009 Subaru Canada, Inc.

MODEL LINEUP 2010 OUTBACK



Outback PZEV

Horizontally opposed, 4-cylinder, 2.5L SUBARU BOXER engine with i-Active Valve Lift System and PZEV emissions equipment

170 horsepower and 170 lb-ft of torque

6-speed Manual Transmission (6MT) or optional Lineartronic™ CVT (Continuously Variable Transmission) with paddle shift controls

Subaru symmetrical full-time All-Wheel Drive

Vehicle Dynamics Control system and Traction Control System

Anti-lock Braking System with Electronic Brake-force Distribution (EBD) and Brake Assist

Front brakes: Ventilated discs (294 x 24 mm), dual-piston calipers

Rear brakes: Solid discs (286 x 10 mm), single-piston calipers

Electronic parking brake and driver-selectable Hill Holder system

Driver and front passenger front and side-impact airbags; side curtain airbags with rollover sensor

Whiplash-reducing front seats with height-adjustable head restraints

17-inch aluminum alloy wheels with Continental ContiProContact™ All-Season tires

Splash guards

Power-adjustable and heated door mirrors (body colour)

Fully automatic headlights

Multi-reflector halogen fog lights

Raised-profile roof rails with integrated swing-in-place crossbars

Privacy tinted glass on rear doors and cargo area

"PZEV" badge and embroidered floor mats

AM/FM/CD/MP3/WMA audio system with 4 speakers, auxiliary audio input and steering wheel-integrated controls

Tilt-adjustable, telescopic steering wheel with integrated cruise controls

Low oil and low windshield washer fluid warning indicators

Power windows (driver's auto down)

Heated front seats; 10-way power-adjustable driver's seat including lumbar support

60/40-split, flat-folding and reclining rear seats

Premium cloth upholstery

Limited Package:

Available on Outback 2.5i Sport (Lineartronic™ CVT) and 3.6R (5EAT SS)

Premium AM/FM/6CD/MP3/WMA audio system

440-watt Harman Kardon® amplifier

9-speaker Harman Kardon® system including subwoofer

Automatic dual-zone climate control

4-way power-adjustable passenger seat

Woodgrain interior trim

Perforated leather seating surfaces

Brushed aluminum door sills

Available Multimedia Option

MULTIMEDIA OPTION

(Available on Outback 2.5i Limited Package and 3.6R Limited Package)

AM/FM/CD/MP3/WMA audio system, voice-activated Bluetooth® hands-free system, Bluetooth® streaming audio, rear-view camera, DVD playback, voice-activated GPS DVD-based navigation and monitor system featuring a colour touchscreen with calendar and calculator.



Outback 2.5i Sport

Horizontally opposed, 4-cylinder, 2.5L SUBARU BOXER engine with i-Active Valve Lift system

170 horsepower and 170 lb-ft of torque

6-speed Manual Transmission (6MT) or optional Lineartronic™ CVT (Continuously Variable Transmission) with paddle shift controls

Subaru symmetrical full-time All-Wheel Drive

Vehicle Dynamics Control system and Traction Control System

Anti-lock Braking System with Electronic Brake-force Distribution (EBD) and Brake Assist

Front brakes: Ventilated discs (294 x 24 mm), dual-piston calipers

Rear brakes: Solid discs (286 x 10 mm), single-piston calipers

Electronic parking brake and driver-selectable Hill Holder system

Driver and front passenger front and side-impact airbags; side curtain airbags with rollover sensor

Whiplash-reducing front seats with height-adjustable head restraints

17-inch aluminum alloy wheels with Continental ContiProContact™ All-Season tires

Splash guards

Power-adjustable and heated door mirrors (body colour)

Multi-reflector halogen fog lights

Raised-profile roof rails with integrated swing-in-place crossbars

Privacy tinted glass on rear doors and cargo area

Windshield wiper de-icer

Fully automatic headlights

Power tilting and sliding glass moonroof

AM/FM/CD/MP3/WMA audio system with 4 speakers, auxiliary audio input and steering wheel-integrated controls

SIRIUS® Satellite Radio installed (free 3-month trial subscription included)

MediaHub for iPod®/USB audio integration

Voice-activated blueconnect® Bluetooth® hands-free system

Auto-dimming rearview mirror with compass

Tilt-adjustable, telescopic steering wheel with integrated cruise controls

Leather-wrapped steering wheel and gear selector (6MT)

Low oil and low windshield washer fluid warning indicators

Power windows (driver's auto up/down)

Heated front seats; 10-way power-adjustable driver's seat including lumbar support

60/40-split, flat-folding and reclining rear seats

Cargo area tray

Premium cloth upholstery

Outback 3.6R

Horizontally opposed, 6-cylinder, 3.6L SUBARU BOXER engine with Dual Active Valve Control System

256 horsepower and 247 lb-ft of torque

5-speed Electronic Direct Control Automatic Transmission with SPORTSHIFT® (5EAT SS), blipping control and paddle shift controls

Subaru symmetrical full-time All-Wheel Drive

Vehicle Dynamics Control system and Traction Control System

Anti-lock Braking System with Electronic Brake-force Distribution (EBD) and Brake Assist

Front brakes: Ventilated discs (316 x 30 mm), dual-piston calipers

Rear brakes: Ventilated discs (290 x 18 mm), single-piston calipers

Electronic parking brake and driver-selectable Hill Holder system

Driver and front passenger front and side-impact airbags; side curtain airbags with rollover sensor

Whiplash-reducing front seats with height-adjustable head restraints

17-inch aluminum alloy wheels with Continental ContiProContact™ All-Season tires

Splash guards

Power-adjustable and heated door mirrors (body colour)

Multi-reflector halogen fog lights

Raised-profile roof rails with integrated swing-in-place crossbars

Privacy tinted glass on rear doors and cargo area

Windshield wiper de-icer

Fully automatic headlights

Power tilting and sliding glass moonroof

AM/FM/CD/MP3/WMA audio system with 4 speakers, auxiliary audio input and steering wheel-integrated controls

SIRIUS® Satellite Radio installed (free 3-month trial subscription included)

MediaHub for iPod®/USB audio integration

Voice-activated blueconnect® Bluetooth® hands-free system

Auto-dimming rearview mirror with compass

Tilt-adjustable, telescopic steering wheel with integrated cruise controls

Leather-wrapped steering wheel

Low oil and low windshield washer fluid warning indicators

Power windows (driver's auto up/down)

Heated front seats; 10-way power-adjustable driver's seat including lumbar support

60/40-split, flat-folding and reclining rear seats

Cargo area tray

Premium cloth upholstery

Product details based on the latest information available at the time of publication and are subject to change without notice or incurring obligation. © 2009 Subaru Canada, Inc.

VEHICLE SPECIFICATIONS

2010 OUTBACK



	PZEV	2.5i Sport	3.6R
ENGINE			
Engine: 2.5L Single Overhead Cam (SOHC), 16-valve, horizontally opposed, 4-cylinder SUBARU BOXER engine, Electronic Throttle Control and i-Active Valve Lift System Power: 170 hp @ 5600 rpm Torque: 170 lb-ft @ 4000 rpm	●	●	–
Engine: 3.6L Dual Overhead Cam (DOHC), 24-valve, horizontally opposed, 6-cylinder SUBARU BOXER engine, Electronic Throttle Control and Dual Active Valve Control System Power: 256 hp @ 6000 rpm Torque: 247 lb-ft @ 4400 rpm	–	–	●
Emissions: Meets Low Emission Vehicle (LEV2) standards	–	●	●
Emissions: Meets Partial Zero Emission Vehicle (PZEV) standards	●	–	–
Engine block: Open deck design, aluminum	●	●	●
Engine mounts: Liquid-filled rubber	●	●	●
Engine top cover	–	–	●
Fuel injection: Sequential multiport	●	●	●
Ignition system: Direct	●	●	●
PZEV emissions equipment	●	–	–
Spark plugs: Iridium-tipped	●	●	●
TRANSMISSION AND DRIVETRAIN			
6-speed Manual Transmission (GMT)	●	●	–
Flexible flywheel	●	●	–
Fully synchronized, including reverse	●	●	–
Hydraulically operated, dry single-plate disc clutch	●	●	–
Starter interlock system (clutch pedal controlled)	●	●	–
Subaru symmetrical full-time All-Wheel Drive system: Viscous-coupling limited-slip centre differential	●	●	–
Lineartronic™ CVT (Continuously Variable Transmission) with manual mode	○	○/LP	–
5-speed Electronic Direct Control Automatic Transmission with SPORTSHIFT® (5EAT SS)	–	–	●
Paddle shift controls	○	○/LP	●
Straight shifter with shift position indicator on instrument panel	○	○/LP	●
Lock-up torque converter	○	○/LP	●
Transmission shift lock	○	○/LP	●
Blipping control	–	–	●
Subaru symmetrical full-time All-Wheel Drive system: Electronically controlled multi-plate transfer clutch	○	○/LP	–
Subaru symmetrical full-time All-Wheel Drive system: Variable Torque Distribution (VTD)	–	–	●
Differential (rear): Standard open type	●	●	●

Product details based on the latest information available at the time of publication and are subject to change without notice or incurring obligation. © 2009 Subaru Canada, Inc.

VEHICLE SPECIFICATIONS 2010 OUTBACK



	PZEV	2.5i Sport	3.6R
CHASSIS			
Brakes: Power-assisted, dual-diagonal system	●	●	●
Brakes: ABS, 4-channel/4-sensor/4-wheel	●	●	●
Brakes: Electronic Brake-force Distribution (EBD)	●	●	●
Brakes: Brake Assist	●	●	●
Brakes: Electronic parking brake	●	●	●
Brakes (front): Ventilated discs (294 x 24 mm), dual-piston calipers	●	●	—
Brakes (front): Ventilated discs (316 x 30 mm), dual-piston calipers	—	—	●
Brakes (rear): Solid discs (286 x 10 mm), single-piston calipers	●	●	—
Brakes (rear): Ventilated discs (290 x 18 mm), single-piston calipers	—	—	●
Hill Holder system: Driver-selectable	●	●	●
Steering: Engine-speed-sensitive, power-assisted rack and pinion	●	●	●
Structure: Advanced ring-shaped reinforcement frame	●	●	●
Structure: Dual, side-impact door beams (front and rear)	●	●	●
Structure: Energy-absorbing crumple zones (front and rear)	●	●	●
Suspension: 4-wheel fully independent	●	●	●
Suspension: Stabilizer bar (front and rear)	●	●	●
Suspension (front): MacPherson strut	●	●	●
Suspension (rear): Double-wishbone	●	●	●
SAFETY AND SECURITY			
Airbags (SRS): Driver dual-stage deployment with seat position sensor	●	●	●
Airbags (SRS): Front passenger dual-stage deployment with occupant detection system	●	●	●
Airbags (SRS): Front seat side-impact	●	●	●
Airbags (SRS): Side curtain with rollover sensor	●	●	●
Assist grips: Outboard seating positions	●	●	●
Brake pedal: Collapsible	●	●	●
Child safety: Rear door locking system	●	●	●
Child safety: Rear seat ISO-FIX/LATCH anchor system	●	●	●
Driver's footrest: Impact-absorbing	●	●	●
Head restraints (front): Height-adjustable	●	●	●
Head restraints (rear): Removable, height-adjustable	●	●	●
Seats (front): Whiplash-reducing	●	●	●
Seatbelts (front): 3-point with pretensioners and load limiters (Driver - ELR / Passenger - ALR)	●	●	●
Seatbelts (front): Height-adjustable shoulder belt anchors	●	●	●
Seatbelts (front): Engagement indicator and warning chime	●	●	●
Seatbelts (rear): 3-point, all seating positions (ALR)	●	●	●
Seatbelts (rear): Integrated shoulder belt anchors	●	●	●
Security: Anti-theft system	●	●	●

Product details based on the latest information available at the time of publication and are subject to change without notice or incurring obligation. © 2009 Subaru Canada, Inc.



	PZEV	2.5i Sport	3.6R
SAFETY AND SECURITY (continued)			
Security: Engine immobilizer system	●	●	●
Security: Keyless entry system with panic alarm (separate door and cargo access controls)	●	●	●
Steering column: Collapsible	●	●	●
Traction Control System	●	●	●
Vehicle Dynamics Control system with lateral-g and yaw-rate sensor	●	●	●
EXTERIOR FEATURES			
Badging (rear): PZEV	●	—	—
Badging (rear): Symmetrical AWD	●	●	●
Badging (rear): 3.6R	—	—	●
Body: Anti-corrosion treatment	●	●	●
Body: Dual-sided galvanized steel	●	●	●
Body: Rocker panels, lower bumpers and lower cladding (black)	●	●	●
Cargo access: Liftgate	●	●	●
Door mirrors: Power-adjustable and heated (body colour)	●	●	●
Door handles: Body colour	●	●	●
Door sill: Brushed aluminum (front doors)	—	LP	LP
Exhaust: Single muffler, single outlet tip (hidden type)	●	●	—
Exhaust: Twin mufflers, single outlet tips (hidden type)	—	—	●
Fog lights: Multi-reflector halogen	●	●	●
Grille: Chrome and silver with Six Star cluster	●	●	●
Headlights: Fully automatic	●	●	●
Headlights: Daytime Running Lights (DRL)	●	●	●
Headlights: Contoured multi-reflector halogen (high beam)	●	●	●
Headlights: Projector beam halogen (low beam)	●	●	●
Hood: Dual-sided galvanized steel with gas strut support	●	●	●
Moonroof: Glass, power tilting and sliding with sunshade	—	●	●
Roof rack: Raised-profile roof rails, integrated swing-in-place crossbars	●	●	●
Splash guards	●	●	●
Spoiler: Roofline, integrated brake light	●	●	●
Tire (spare): Compact 145/80 R17 (under cargo area)	●	●	●
Tires: 225/60 R17 98T Continental ContiProContact™ M+S All-Season	●	●	●
Wheels: 17" x 7" aluminum alloy, 6-spoke design	●	●	●
Windows: Privacy tinted glass (rear doors and cargo area)	●	●	●
Window (rear): Defogger with timer	●	●	●
Windshield: Laminated UV protection and tinted	●	●	●
Windshield: Wiper de-icer (integrated)	—	●	●
Wipers (windshield): Variable intermittent with washer	●	●	●
Wiper (rear window): Intermittent and continuous mode with washer	●	●	●

Product details based on the latest information available at the time of publication and are subject to change without notice or incurring obligation. © 2009 Subaru Canada, Inc.

VEHICLE SPECIFICATIONS 2010 OUTBACK

	PZEV	2.5i Sport	3.6R
SEATING AND TRIM			
Accents/trim: Aluminum finish	●	●	●
Accents/trim: Woodgrain	–	LP	LP
Floor mats: "Outback" embroidered	–	●	●
Floor mats: "PZEV" embroidered	●	–	–
Interior: Premium cloth upholstery	●	●	●
Interior: Perforated leather seating surfaces	–	LP	LP
Gear selector: Soft-grip	●	●	●
Gear selector: Leather-wrapped (6MT)	–	●	–
Seat (driver's): 10-way power-adjustable, including power lumbar support	●	●	●
Seat (front): Passenger, 4-way manually adjustable	●	●	●
Seat (front): Passenger, 4-way power-adjustable	–	LP	LP
Seats (front): Heated with high/low level settings	●	●	●
Seats (front): Reclining bucket	●	●	●
Seats (rear): Contoured bench	●	●	●
Seats (rear): 60/40-split, flat-folding	●	●	●
Seats (rear): Reclining	●	●	●
Seats (rear): Folding centre armrest	●	●	●
Steering wheel: Soft-grip	●	–	–
Steering wheel: Leather-wrapped	–	●	●
AUDIO AND TECHNOLOGY			
Audio system: AM/FM/CD/MP3/WMA	●	●	●
Audio system: Premium AM/FM/6CD/MP3/WMA	–	LP	LP
Amplifier: 440-watt, 8-channel Harman Kardon® with Digital Signal Processing (DSP)	–	LP	LP
Antenna: In-glass integrated	●	●	●
Audio controls: Illuminated, steering wheel integrated	●	●	●
Auxiliary input: Audio source in armrest console	●	●	●
blueconnect® Bluetooth® hands-free system (voice-activated) ¹	–	●	●
MediaHub: iPod®/USB audio integration ¹	–	●	●
Satellite radio: Pre-wired (dealer accessory required)	●	–	–
Satellite radio: SIRIUS® Satellite Radio installed (free 3-month trial subscription included)	–	●	●
Speakers: 4-speaker system	●	●	●
Speakers: 9-speaker Harman Kardon® system, including subwoofer	–	LP	LP
Multimedia Option:	–	LP (option)	LP (option)
Audio system: AM/FM/CD/MP3/WMA			
Bluetooth® hands-free system: Voice-activated			
Bluetooth® streaming audio			
Rear-view camera			
DVD playback			
Monitor system: Colour touchscreen with calendar and calculator			
Navigation system: GPS DVD-based, voice-activated			

Product details based on the latest information available at the time of publication and are subject to change without notice or incurring obligation. © 2009 Subaru Canada, Inc.

VEHICLE SPECIFICATIONS 2010 OUTBACK



	PZEV	2.5i Sport	3.6R
COMFORT AND CONVENIENCE			
Armrest (front): With console storage	●	●	●
Climate control: Air conditioning with air filtration	●	●	●
Climate control: Automatic, dual-zone with synchronize button	—	LP	LP
Climate control: Rear seat heating / ventilation / air conditioning ducts	●	●	●
Cruise control: Steering wheel integrated	●	●	●
Cup holders (front): Console integrated (2)	●	●	●
Cup holders (rear): Armrest integrated (2)	●	●	●
Glove box: Lockable and illuminated	●	●	●
Ignition key ring: Illuminated	●	●	●
Light: Front door courtesy lights	●	●	●
Light: Interior dome with off delay	●	●	●
Light: Map spotlights	●	●	●
Power outlet: 12V in armrest console and in dash	●	●	●
Rearview mirror: Auto-dimming with compass ¹	—	●	●
Remote starter: Pre-wired (accessory kit required) (5EAT SS and CVT only)	●	●	●
Steering wheel: Tilt-adjustable, telescopic	●	●	●
Storage: Dash compartment	●	—	—
Storage: Door compartments	●	●	●
Storage: Passenger seatback pocket	●	●	●
Storage: Overhead compartment	●	●	●
Visor: Dual, with extensions and illuminated mirrors	●	●	●
Windows (power): Driver's window auto down	●	—	—
Windows (power): Driver's window auto up/down	—	●	●
Windows (power): Illuminated switches, driver's side	●	—	—
Windows (power): Illuminated switches, all seating positions	—	●	●

Product details based on the latest information available at the time of publication and are subject to change without notice or incurring obligation. © 2009 Subaru Canada, Inc.

VEHICLE SPECIFICATIONS 2010 OUTBACK



	PZEV	2.5i Sport	3.6R
INSTRUMENTS			
Gauges: Analog with white illuminated needles	●	●	●
Gauges: Full needle sweep on start-up	●	●	●
Gauges: Sport design with metallic trim	●	●	●
Information display: Clock, ambient temperature, driving range, fuel economy (average and real time)	●	●	●
Instrument panel: Adjustable dash illumination	●	●	●
Instrument panel: Coolant temperature indicator	●	●	●
Instrument panel: ECO gauge	●	●	●
Instrument panel: Fuel gauge with low fuel warning light and fuel door location indicator	●	●	●
Instrument panel: Headlights and fog lights "on" indication	●	●	●
Instrument panel: LCD display with gear position indicator, dual trip odometers, door ajar indicator, cruise set display	●	●	●
Instrument panel: Low oil level warning light indicator	●	●	●
Instrument panel: Low windshield washer fluid warning light indicator	●	●	●
Speedometer: Electronically controlled analog	●	●	●
Tachometer	●	●	●

CARGO AREA			
Cargo cover: Retractable	●	●	●
Cargo tie down hooks, chrome (4)	●	●	●
Cargo tray / protective mat	—	●	●
Light: Cargo area	●	●	●
Power outlet: 12V	●	●	●
Storage: Sub-floor compartment	●	●	●
Utility bag hooks (2)	●	●	●

Measurements

FUEL ECONOMY			
Manual transmission (City/Hwy) (L/100km)	10.6/7.4	10.6/7.4	—
Automatic transmission (City/Hwy) (L/100km)	9.5/6.9	9.5/6.9	11.8/8.2
Recommended minimum octane (AKI)	87	87	87
Fuel tank capacity (L)	70	70	70

GENERAL WEIGHTS			
Curb weight: Manual transmission (kg)	1542	1556	—
Curb weight: Automatic transmission (kg)	1591	1606	1648
Gross Vehicle Weight Rating (GVWR) (kg)	2080	2080	2130

Product details based on the latest information available at the time of publication and are subject to change without notice or incurring obligation. © 2009 Subaru Canada, Inc.

VEHICLE SPECIFICATIONS

2010 OUTBACK



	PZEV	2.5i Sport	3.6R
TOWING CAPACITY ([†] Please review Owner's Manual for details)			
Maximum weight (kg) with trailer brakes [†]	1227	1227	1363
Maximum tongue weight (kg)	91	91	91
EXTERIOR			
Length (mm)	4780	4780	4780
Width (mm) without mirrors	1820	1820	1820
Width (mm) with mirrors	2050	2050	2050
Height (mm) with roof rails	1670	1670	1670
Wheelbase (mm)	2740	2740	2740
Track: Front (mm)	1550	1550	1550
Track: Rear (mm)	1550	1550	1550
Minimum ground clearance (at curb weight) (mm)	220	220	220
Steering: Turns (lock-to-lock)	3.2	3.2	3.2
Steering: Minimum turning circle radius (curb-to-curb) (m)	5.6	5.6	5.6
Drag coefficient (cd)	0.35	0.35	0.35
INTERIOR			
Headroom: Front (mm)	1036	982	982
Headroom: Rear (mm)	999	999	999
Legroom: Front (mm)	1091	1091	1091
Legroom: Rear (mm) (minimum)	960	960	960
Shoulder room: Front (mm)	1430	1430	1430
Shoulder room: Rear (mm)	1426	1426	1426
Hip room: Front (mm)	1384	1384	1384
Hip room: Rear (mm)	1370	1370	1370
EPA passenger volume (L)	2984	2899	2899
CARGO AREA			
Cargo volume (seats up) (L)	972	972	972
Cargo volume (seats folded flat) (L)	2019	2019	2019
Floor length (seats folded flat) (mm)	1790	1790	1790
Floor length (seats up) (mm)	1045	1045	1045
Height (mm)	739	739	739
Rear gate opening width at floor (mm)	1083	1083	1083
Tailgate to ground height (mm)	756	756	756
Width between wheel wells (mm)	1090	1090	1090

Product details based on the latest information available at the time of publication and are subject to change without notice or incurring obligation. © 2009 Subaru Canada, Inc.



	PZEV	2.5i Sport	3.6R
GEAR RATIOS			
Manual Transmission (6MT):			
First Gear	3.454	3.454	–
Second Gear	1.947	1.947	–
Third Gear	1.296	1.296	–
Fourth Gear	0.972	0.972	–
Fifth Gear	0.825	0.825	–
Sixth Gear	0.695	0.695	–
Reverse Gear	3.636	3.636	–
Final Drive Ratio	4.444	4.444	–
Lineartronic™ CVT (Continuously Variable Transmission) - Simulated Manual Mode:			
First Gear	3.525	3.525	–
Second Gear	2.238	2.238	–
Third Gear	1.641	1.641	–
Fourth Gear	1.194	1.194	–
Fifth Gear	0.850	0.850	–
Sixth Gear	0.611	0.611	–
Reverse Gear	2.358	2.358	–
Final Drive Ratio	3.900	3.900	–
Automatic Transmission with SPORTSHIFT® (5EAT SS):			
First Gear	–	–	3.540
Second Gear	–	–	2.264
Third Gear	–	–	1.471
Fourth Gear	–	–	1.000
Fifth Gear	–	–	0.834
Reverse Gear	–	–	2.370
Final Drive Ratio	–	–	3.083

Product details based on the latest information available at the time of publication and are subject to change without notice or incurring obligation. © 2009 Subaru Canada, Inc.



EXTERIOR COLOURS



Crystal Black Silica



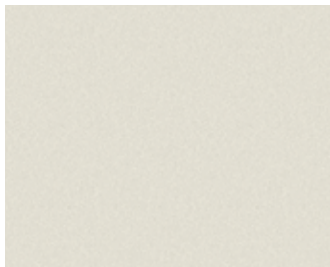
Cypress Green Pearl



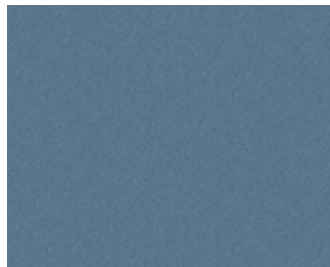
Graphite Grey Metallic



Harvest Gold Metallic



Satin White Pearl

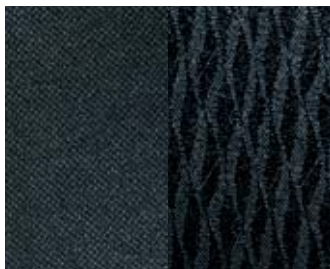


Sky Blue Metallic



Steel Silver Metallic

UPHOLSTERY



Black Cloth



Ivory Cloth



Black Leather



Ivory Leather

WHEELS



17-inch Aluminum Alloy,
6-spoke design

Product details based on the latest information available at the time of publication and are subject to change without notice or incurring obligation. © 2009 Subaru Canada, Inc.

VEHICLE PRICING

MODEL	ENGINE	TRANSMISSION	MODEL CODE	MSRP
PZEV	2.5L SOHC	6MT	AD1 PZ	\$ 28,995
		CVT	AD2 PZ	\$ 30,195
2.5i Sport	2.5L SOHC	6MT	AD1 SP	\$ 31,795
		CVT	AD2 SP	\$ 32,995
2.5i Limited Package	2.5L SOHC	CVT	AD2 LP	\$ 35,795
2.5i Limited Package with Multimedia Option	2.5L SOHC	CVT	AD2 LPN	\$ 38,095
3.6R	3.6L DOHC	5EAT SS	AD2 36	\$ 35,695
3.6R Limited Package	3.6L DOHC	5EAT SS	AD2 LP6	\$ 38,495
3.6R Limited Package with Multimedia Option	3.6L DOHC	5EAT SS	AD2 LN6	\$ 40,795

ALL PRICES ALONG WITH SPECIFICATIONS ARE SUBJECT TO CHANGE WITHOUT NOTICE. THE DEALER MAY SELL BELOW SUGGESTED RETAIL WITHOUT FEAR OF RECRIMINATION FROM SUBARU CANADA, INC. MSRP SHOWN EXCLUDES EXCISE TAX FOR AIR CONDITIONING, INLAND FREIGHT AND PRE-DELIVERY CHARGES. MSRP DOES NOT INCLUDE APPLICABLE TAXES.

COLOUR AVAILABILITY

EXTERIOR COLOUR	COLOUR CODE	PZEV	2.5i Sport		3.6R			
			AD1 PZ AD2 PZ	AD1 SP AD2 SP	Limited Package		Limited Package	
					AD2 LP	AD2 LPN	AD2 36	AD2 LP6
Crystal Black Silica	4S	▲	▲	▲ / □	▲ / □	▲	▲ / □	▲ / □
Cypress Green Pearl	4T	□	□	□	□	□	□	□
Graphite Grey Metallic	3T	▲	▲	▲	▲	▲	▲	▲
Harvest Gold Metallic	9K	□	□	□	□	□	□	□
Satin White Pearl	7J	▲	▲	▲	▲	▲	▲	▲
Sky Blue Metallic	7F	▲	▲	▲	▲	▲	▲	▲
Steel Silver Metallic	6Z	▲	▲	▲	▲	▲	▲	▲
INTERIOR TRIM		Cloth	Cloth	Leather	Leather	Cloth	Leather	Leather

▲ : Black □ : Ivory

Product details based on the latest information available at the time of publication and are subject to change without notice or incurring obligation. © 2009 Subaru Canada, Inc.