



**Gear up for your next adventure.**

\$500 COLUMBIA SPORTSWEAR GIFT VOUCHER\*

This special offer is full of possibilities and is yours for the taking with any 2007 Forester Columbia Edition purchased on or before February 28th, 2007.

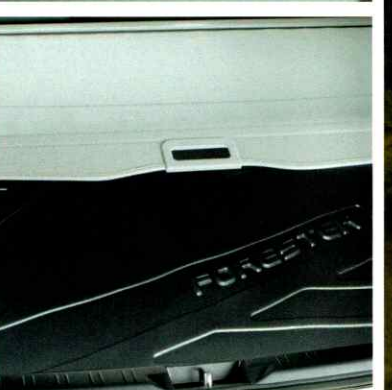
With a fabulously equipped vehicle and brand new Columbia Sportswear apparel or footwear, what more could all you adventure seekers ask for?

\*Redeemable at Sport Chek™ and Sports Experts® retail stores in Canada.

\*Redeemable at Sport Chek™ and Sports Experts® retail stores in Canada.



Available exclusively in Canada.



subaru.ca



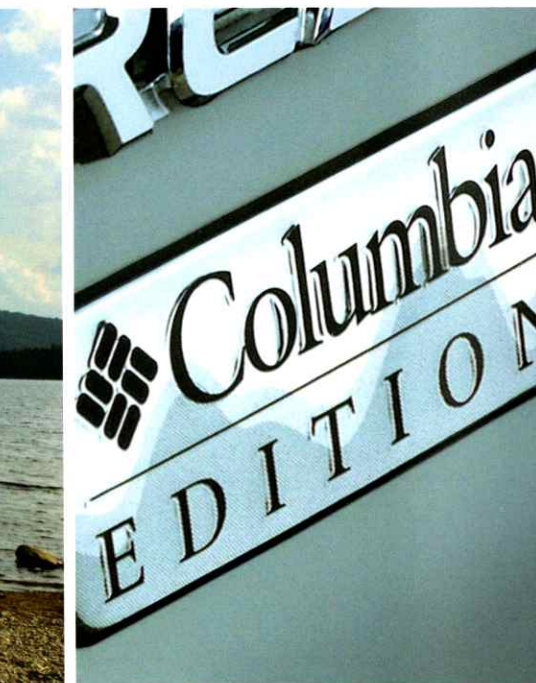
The Supplemental Restraint System (SRS airbags) affords the driver and passenger additional protection in some collisions. This system provides supplemental protection only, and seatbelts must be worn in order to avoid injuries to out-of-position occupants upon airbag deployment. The combination of SRS and seatbelts provides the best protection in a serious accident. All illustrations, specifications, features and photographs contained in this brochure are based on product information available at the time of its printing, and may not be completely accurate following its publication. Colours shown may vary due to reproduction variations in the printing process, and some vehicle parts cannot be shown in certain photographs. Subaru Canada, Inc. reserves the right to discontinue or make changes at any time, without notice or incurring obligations, to colours, materials, equipment, accessories, features, specifications and models, or to change their prices. Some models shown may be from international markets and are not available in Canada, or they may be shown with equipment or accessories which are optional (at extra cost) or only available in certain combinations, or they may be subject to product delays or not be available in Canada. Please visit our Web site for the latest information and specifications. For complete details on product updates, warranties or the Subaru CARE program, please contact your Subaru Dealer. Forester, Subaru, SUBARU BOXER, Subaru CARE and Subaru CARE Customer Assistance for Roadside Emergencies are registered trademarks. Printed in Canada. © 2006 Subaru Canada, Inc. 2007 Subaru Forester Columbia Edition model year.



Environmental Management System (EMS) ISO 14001:2004 certified by SGS. Brochure is printed on 100% chlorine-free bleached pulp (TCF) and uses vegetable-based inks to be fully recyclable with no harmful residue.

SBF07ECE

FORESTER 2007  
COLUMBIA EDITION



## Gear up and go.

Skiing, sailing, biking, hiking, camping...enjoying

the great outdoors has never been easier thanks to

the 2007 Forester Columbia Edition. Equipped with

a 173 hp SUBARU BOXER engine, exceptional safety

features and Subaru's symmetrical full-time

All-Wheel Drive system, the Forester Columbia

Edition is the perfect accessory for any adventure.

Special features like an extra-large power glass

moonroof lets nature in while heated front seats

help keep the chill out. A retractable cargo cover

and protective cargo area tray keep gear hidden and

messes contained. And stylish 16" aluminum alloy

wheels and Columbia Edition accents turn more

heads than you can count. A special limited time

\$500 Columbia Sportswear gift voucher will also let

you pick up whatever gear you might need along

the way, making the Forester Columbia Edition the

perfect outdoor companion.

# FORESTER

## Engine

### Forester Columbia Edition

*Type* 2.5L Single Overhead Cam (SOHC), 16-valve, horizontally-opposed, 4-cylinder SUBARU BOXER engine, Electronic Throttle Control and i-Active Valve Lift System

*Power* 173 hp @ 6,000 rpm †

*Torque* 166 lb-ft @ 4,400 rpm †

*Meets Low Emission Vehicle (LEV2) standards*

† Peak horsepower and torque values are determined using the new SAE J1349 (Rev. 8/04) standard.

## Measurements

	Columbia Edition
Fuel economy: Manual transmission (City/Hwy) (L/100km)	10.7/7.5
Fuel economy: Automatic transmission (City/Hwy) (L/100km)	10.4/7.7
Recommended minimum octane (AKI)	87
Fuel tank capacity (L)	60
Curb weight: Manual transmission (kg)	1430
Curb weight: Automatic transmission (kg)	1450
Towing capacity: Maximum weight (kg) with trailer brakes†	1087
Length (mm)	4485
Width (mm) with mirrors	1979
Height (mm) with roof rails	1590
Roof rack: Maximum load (kg)‡	68 <sub>1</sub>
Wheelbase (mm)	2525
Minimum ground clearance (at curb weight) (mm)	205
Steering: Turning circle (curb-to-curb) (m)	10.6
Headroom: Front / rear (mm)	992 / 939
Legroom: Front / rear (mm)	1107 / 856
EPA interior volume (L)	3407
Cargo area: EPA volume (seats up) (L)	818
Cargo area: SAE volume (seats folded flat) (L)	1826

†Please review owner's manual for details.

‡With optional crossbars

## Transmission and Drivetrain

*Manual Transmission* 5-speed manual transmission (5MT) with Hill Holder system, standard AWD type: Viscous-coupling limited-slip centre differential

*Automatic Transmission* 4-speed electronic direct control automatic transmission (4EAT), optional AWD type: Electronically controlled multi-plate transfer clutch

*Drivetrain* Subaru symmetrical full-time All-Wheel Drive system

## Chassis

- Brakes: Power-assisted, dual-diagonal system
- Brakes: ABS 4-channel/4-sensor/4-wheel
- Brakes: Electronic Brake-Force Distribution (EBD)
- Brakes (front): Ventilated discs (294 x 24 mm), dual piston calipers
- Brakes (rear): Drum (229 mm)
- Steering: Engine speed sensitive, power-assisted rack and pinion
- Structure: Advanced ring-shaped reinforcement frame
- Structure: Dual, side-impact door beams (front and rear)
- Structure: Energy-absorbing crumple zones (front and rear)
- Structure: Hydroformed front subframe
- Suspension: 4-wheel fully-independent
- Suspension: Heavy-duty raised

## Seating and Trim

- Accents/trim: Silver metallic finish
- **Floor mats: "Columbia Edition" embroidered**
- Interior: Moquette cloth upholstery (Graphite Grey)
- Gear selector: Soft-grip
- Parking brake: Soft-grip
- Seating capacity (5)
- Seat (driver's): 6-way manual adjustable with lumbar support
- **Seats (front): Heated with high/low setting**
- Seats (front): Reclining bucket type
- Seats (rear): Contoured bench
- Seats (rear): 60/40-split, flat-folding
- Seats (rear): Folding centre armrest
- Steering wheel: Soft-grip

— Columbia Edition

• standard

+ accessory

— not available

## Safety and Security

- Airbags (SRS): Driver and front passenger, dual-stage deployment
- Airbags (SRS): Driver's seat position sensor
- Airbags (SRS): Front seat side-impact with head and chest protection
- Airbags (SRS): Passenger occupant detection system with on/off indication
- Brake pedal: Collapsible, passive safety type
- Child safety: Rear door locking system
- Child safety: Rear seats ISO-FIX/LATCH anchor system
- Head restraints (front): Height adjustable, passive safety type
- Head restraints (rear): Removable and adjustable
- Seatbelts (front): 3-point with pretensioners and load limiters (ELR)
- Seatbelts (rear): Height adjustable shoulder belt anchors
- Seatbelts (rear): 3-point, all seating positions (ALR/ELR)
- Seatbelts (rear): Height adjustable outboard shoulder belt anchors
- Security: Anti-theft system
- Security: Keyless entry system with panic alarm
- Steering column: Collapsible

## Audio

- AM/FM/CD
- Antenna: In-glass integrated
- Speakers (main) (4)
- + Tweeters (2)
- + Premium upgraded speakers
- + Subwoofer

Forester Columbia Edition special features indicated in bold.

— Columbia Edition

## Exterior

- **Badging (rear): Columbia Edition**
- Body: Anti-corrosion treatment
- Body: Dual-sided galvanized steel
- Bumpers & bodyside cladding (Unpainted Textured Grey)
- Door mirrors: Power adjustable, foldable & heated (black)
- Doors: Black handles
- Fog lights: Multi-reflector halogen
- Headlights: Contoured multi-reflector halogen (high and low beam), auto-off
- **Moonroof: Large glass, power and sliding with sunshade**
- Roof rack: Roof rails (black)
- + Roof rack: Crossbars, lockable
- **Splash guards**
- Tire (spare): Temporary (under cargo area)
- Tires: 215/60 R16 94H Yokohama Geolandar G900 M+S All-Season
- **Wheels: 16" x 6.5" aluminum alloy, 12-spoke design**
- Windows: Tinted
- Windshield: Laminated UV protection and tinted
- Window (rear): Defogger with timer
- Wipers (windshield): Variable intermittent with washer
- Wiper (rear window): Intermittent and continuous mode with washer
- Wiper (rear window): De-icer heater

## Colours



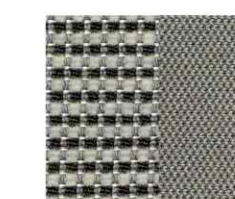
Crystal Grey Metallic



Evergreen Metallic



Newport Blue Pearl



Graphite Grey Cloth

— Columbia Edition

• standard

+ accessory

— not available

## Instruments

- Clock: Digital back-lit LCD in dash
- Gauges: Analog with red illuminated needles
- Gauges: Silver trim
- Instrument panel: Automatic transmission gear position indicator (4EAT)
- Instrument panel: Coolant temperature gauge
- Instrument panel: Fuel gauge with low fuel warning light
- Instrument panel: Outside temperature display
- Odometer: Digital, dual trip modes
- Speedometer: Electronically controlled analog
- Tachometer
- Warning lights: ABS, airbag, brake fluid, oil pressure, check engine, door ajar

## Cargo Area

- Cargo tie down hooks
- **Cargo tray/protective mat**
- Gear bars
- Grocery bag hooks
- Light: Cargo area
- Power outlet: 12V
- **Retractable cargo cover (Tonneau)**
- Storage: Sub-floor tray

## Comfort and Convenience

- Armrest (front): Multi-function with console storage
- Climate control: Air conditioning
- Climate control: Air filtration
- Climate control: Manual
- Cruise control: Steering wheel stalk controls
- Cup holders (front): Console integrated (4)
- Cup holders (front): Door integrated (2)
- Cup holders (rear): Retractable (2)
- Glove box: Lockable
- Light: Interior dome with off delay
- Light: Map spotlights
- Pedal: Driver's foot rest
- Power outlet: 12V in armrest console and in dash
- Steering wheel: Tilt adjustable
- Storage: Dash compartment with lid
- Storage: Front door compartments
- Storage: Overhead compartment
- Storage: Small in-dash compartment
- Visor: Dual, with mirrors
- Windows (power): Driver's window auto down

## Warranties

- New Vehicle Limited Warranty (36 month/60,000 km)
  - Major Component Warranty (60 month/100,000 km)
  - Surface Corrosion Limited Warranty (36 month/60,000 km)
  - Anti-Perforation Limited Warranty (60 month/unlimited km)
  - Emission Control System Limited Warranty
  - Parts and Accessories Limited Warranty
- See warranty manual for details and limitations.

— Columbia Edition

• standard

+ accessory

— not available