

2 0 0 1 S U B A R U

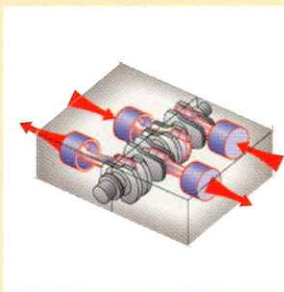
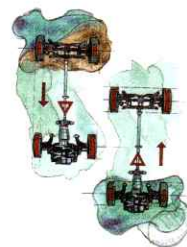


At first glance, the words "adventure" and "safety" don't seem to belong in the same sentence. But the truth is, the very technology that makes every Subaru a fun, free-spirited vehicle is the same technology that makes it one of the safest on the road today. It's called the Subaru All-Wheel Driving System.

This unique configuration consists of three critical components. The first is full-time All-Wheel Drive, a drivetrain that constantly monitors changing road conditions and transfers power from the wheels that slip to the wheels that grip, whether you're on a muddy mountain trail or a rain-slicked street. The second component, the horizontally opposed "boxer" engine, provides a lower centre of gravity, which, in turn, reduces body roll in a corner (a common sport-utility shortcoming). Finally, the long-travel suspension not only provides exceptional ground clearance, but more responsive contact with the road to better handle bumps and deliver cornering performance. Together, these individual parts create a whole new driving experience, one that's eminently more confident – and more fun.

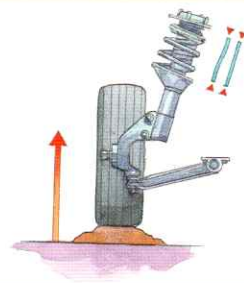
Of course, on those rare occasions when an accident does occur, your Subaru is exceptionally well prepared to handle the impact. In fact, Subaru vehicles have consistently scored high ratings during Insurance Institute for Highway Safety crash testing.

*Subaru All-Wheel Drive isn't just a safety feature – it's an active safety feature. By monitoring road conditions and distributing power to the wheels that need the most traction, our computer-controlled All-Wheel Driving System can help you avoid accidents in all types of driving conditions, instead of just surviving them.*



*The horizontally opposed "boxer" engine sets its pistons opposite each other, rather than the in-line configuration of most other vehicles. This unique arrangement produces less vibration and quieter engine performance. It also allows the engine to be mounted lower in the chassis, resulting in a lower centre of gravity and greater vehicle stability.*

*The four-wheel independent suspension utilizes an advanced long-travel design that helps absorb bumps and clear obstacles. In the rear, it provides passive rear-wheel steering as cornering forces increase, so you can handle even the tightest turns with confidence.*



*With the limited-slip rear differential (available on select Subaru models), the All-Wheel Drive system can transfer power between rear wheels, creating the ultimate in traction and performance. (shown with accessory differential protector)*

# Outback H6-3.0 VDC

MORE POWER. MORE CONTROL.

If your desire for driving control equals your desire to enjoy the freedom of the road, you'll love the all-new Subaru Outback H6-3.0 VDC. The solid power of an efficient 212-horsepower 6-cylinder DOHC engine combines with a Vehicle Dynamics Control (VDC) system, giving you the power you want and the control you need – that way you can conquer those Canadian mountain passes like they're a long straightaway. Get to those quiet out-of-the-way places with ease. And maintain traction and control no matter the driving surface or road conditions. The Outback H6-3.0 VDC also comes with many creature comforts like a McIntosh® sound system, standard 8-way power driver's seat and 16-inch aluminum-alloy wheels. I guess it's easy to see why the all-new Subaru Outback H6-3.0 VDC gives you the ultimate in power and control.



**Automobile Journalists Association of Canada**  
**2001 Intermediate SUV of the Year Outback H6-3.0 VDC**



Vehicle Dynamics Control is the ultimate system for driving safely and confidently. Measuring steering angle against your car's actual direction of travel, it can sense conditions like front-end or rear-end drift and help correct it by applying momentary brake pressure to individual wheels.



McIntosh®, the consummate name in home audio, teamed up with Subaru to engineer unprecedented performance from this, their first ever car audio system. Delivering 200 watts of true, clear sound, your system includes a cassette and single-disc CD player with 11 speakers in 7 optimal locations.

Over the past two years, few sport-utilities have come close to matching the All-Wheel Drive Subaru Forester. After all, with its rare blend of sport-utility toughness and car-like comfort, the Forester has been an easy winner with both Canadian drivers and the critics alike. But just when you thought this sport-utility all-star couldn't get any better, along comes the new and improved Subaru Forester for 2001.

This latest edition of the Forester offers our most impressive sport-utility package ever. For starters, there's a new body style that incorporates sleeker lines and a more aggressive look. (The visual effect is, shall we say, easy on the eyes.) The new Forester features a wider rear wheelbase that, together with its low centre of gravity, delivers improved vehicle handling for enhanced driving performance and safety.

Of course, these improvements simply add to the unique features that have always set the Forester above its sport-utility competition. Features like the rugged, adventurous traction of full-time All-Wheel Drive. A lower rear end that's a snap to load. And a smooth, car-like ride. All in all, the Subaru Forester has never looked better.



The Forester S is shown in Sedona Red Pearl/Titanium Pearl.



A low body design makes the roomy cargo bay easy to load.



The Forester S Limited is shown in Silverthorn Metallic with U.S. roof rack.

## ENGINE

Horizontally opposed, 4 cylinders, sequential multipoint fuel injection

Low Emissions Vehicle (LEV) standards  
2.5-litre SOHC, 16-valve LEV engine  
165 hp @ 5,600 rpm  
166 lbs-ft torque @ 4,000 rpm

## TRANSMISSION

Manual, 5-spd (SMT) ..... standard  
Automatic, 4-spd electronic (4EAT) ..... available

## DRIVETRAIN

Full-time All-Wheel Drive ..... standard on all models  
Limited-slip rear differential (viscous type) ..... standard on S and S Limited

## CHASSIS

Suspension ..... 4-wheel fully independent, heavy-duty  
..... raised  
Front: MacPherson-type strut with coil spring  
Rear: Dual-link type strut with coil spring

Brakes ..... ABS, 4-wheel, 4-channel, 4-sensor  
Front: vented discs with twin-piston calipers  
Rear: drums (L), solid discs (S/S Limited)

Steering ..... Power-assisted (engine-speed-sensing)  
rack-and-pinion  
10.8 metres minimum turning circle  
(curb-to-curb)

## CAPACITIES AND WEIGHTS

Fuel tank: 60 litres

	5MT	4EAT
Fuel economy (hwy/city, L/100 km) .....	7.8/11.0	8.1/10.8
Curb weight (kg)		
Forester L .....	1410*	1435*
Forester S .....	1425	1450
Forester S Limited .....	1450	1475
Towing capacity (maximum trailer weight) .....	907 kg	(2,000 lbs)

\*Add 15 kg if air conditioned.

## ELECTRICAL SYSTEM

Low-maintenance distributorless electronic ignition system. Platinum-tipped spark plugs with 100,000 km maintenance interval.

## EXTERIOR DIMENSIONS

Wheelbase (mm) .....	2525
Ground clearance (mm) .....	190
Overall length (mm) .....	4460
Overall width (mm) .....	1735
Overall height (mm) .....	1595 (including sport rack system)

## INTERIOR DIMENSIONS

	Forester L & S Front/Rear	Forester S Limited Front/Rear
Headroom (mm) .....	1020/1006	1005/945
Legroom (mm) .....	1092/848	1092/848
Shoulder room (mm) .....	1360/1362	1360/1362
Cargo space (seats up, EPA index) .....	906 litres	906 litres
Cargo space (seats down, SAE index) .....	1800 litres	1670 litres

## FORESTER FEATURES

### SAFETY FEATURES

	L	S	SL
Full-time All-Wheel Drive	•	•	•
Limited-slip rear differential (viscous type)	—	•	•
ABS, 4-wheel, 4-channel, 4-sensor	•	•	•
Child protection rear door locks	•	•	•
Driver and front-passenger SRS air bags	•	•	•
Ring-shaped reinforced tubular frame and chassis design	•	•	•
Front and rear crumple zones	•	•	•
Collapsible steering column	•	•	•
Side-impact door beams	•	•	•
Galvanized steel body (dual-sided)	•	•	•
3-point rear seat belts for all three seating positions	•	•	•
with height-adjustable outboard shoulder belt anchors	•	•	•
3-point front seat belts with load limiters and pretensioners	•	•	•
with height-adjustable shoulder belt anchors	•	•	•
3 rear seat child safety seat anchors	•	•	•
Front and 3 rear seat headrests	•	•	•

### EXTERIOR FEATURES

	L	S	SL
Halogen headlights; aero-composite with auto-off	•	•	•
Halogen fog lamps	•	•	•
Chrome front grille	•	•	•
Colour-keyed outside mirrors	—	•	•
Grey body side cladding	•	—	—
Painted body side cladding - Titanium Pearl	—	•	—
Power, heated outside mirrors	•	•	•
15" silver-styled steel wheels with	•	—	—
P205/70 R15 all-season tires	•	•	•
16" alloy wheels with	—	•	—
P215/60 R16 all-season tires	—	•	•
16" gold-accented alloy wheels with	—	•	•
P215/60 R16 all-season tires	—	•	•
Full-size spare under cargo deck	•	•	•
Glass power moonroof with U.V. protection	—	•	•
Rear wind deflector	Acc	Acc	•
Glass-integrated antenna	•	•	•
Sport rack system (U.S. rack systems shown on all models)	•	•	•
Fixed intermittent windshield wipers (front)	•	—	—
Variable intermittent windshield wipers (front)	—	•	•
Front windshield wiper deicer	—	•	•
Fixed intermittent rear window wiper/washer	•	•	•

### INTERIOR FEATURES

	L	S	SL
Air conditioning (CFC-free)	O	•	•
Cruise control	•	•	•
Cargo area and front dash 12-volt acc. outlets	•	•	•
Tie downs in cargo area	•	•	•
Removable plastic tray in cargo area	•	•	•
3 concealed storage compartments under cargo area floor	•	•	•
Digital clock	•	•	•
Dual covered visor mirrors	—	•	•
Dual cup holders (front and rear)	•	•	•
80W, 4-speaker AM/FM stereo with cassette	•	—	—
80W, 6-speaker AM/FM stereo with cassette	—	•	•
6-disc in-dash CD player	Acc	•	•
Dual trip odometer	•	•	•
Outside temperature digital display (in dash)	•	•	•
Reclining front bucket seats with see-through headrests	•	•	•
6-way adjustable driver's seat	•	•	•
Heated front seats	—	•	•
Bench-style 60/40 rear seats with three passenger	•	•	•
headrests	•	•	•
Woodgrain accented interior	Acc	Acc	•
Leather-wrapped steering wheel, shifter and hand brake	•	•	•
Leather seat surface	—	—	•
Driver seat lumbar adjuster	•	•	•
Power windows and door locks	•	•	•
Tilt steering wheel	•	•	•
Covered centre console	•	—	—
Covered centre console with armrest	—	•	•
Overhead sunglasses storage compartment	•	•	•
Front map lights	•	•	•
Keyless entry	Acc	•	•
Front seatback storage compartment	—	•	•

### KEY

• Standard — Not available Acc Available accessory O Optional

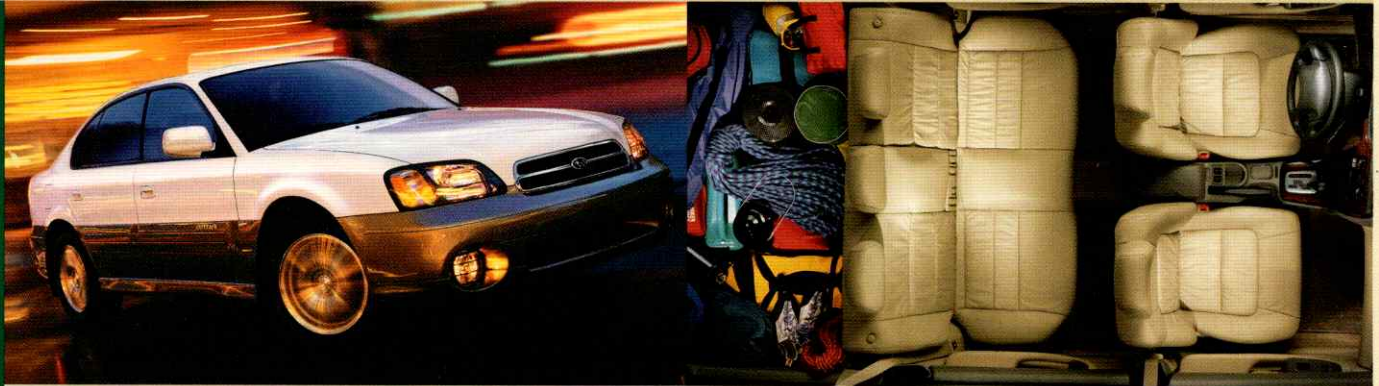
When we at Subaru first created the Outback, drivers across Canada were understandably excited. After all, this striking new breed of All-Wheel Drive vehicle was the first to bridge the gap between sport-utility capabilities and car-like comfort, an achievement perfectly suited to the Canadian driving experience.

But Subaru didn't stop there. We continued to add more and more vehicles to the Outback line, each one blending the very best qualities of the sport-utility and the car. Vehicles like the luxurious Outback Limited. The versatile Outback Sedan. The playful Outback Sport. And the new Outback H6-3.0VDC, combining the power of 6 cylinders with the control of a highly sophisticated vehicle stability system.

Today, the Outback line has created more than just a strong buzz among drivers. It's created an entirely new category of vehicles, as more and more carmakers see the wisdom (and success) of our superior "crossover" concept and unrivaled engineering.

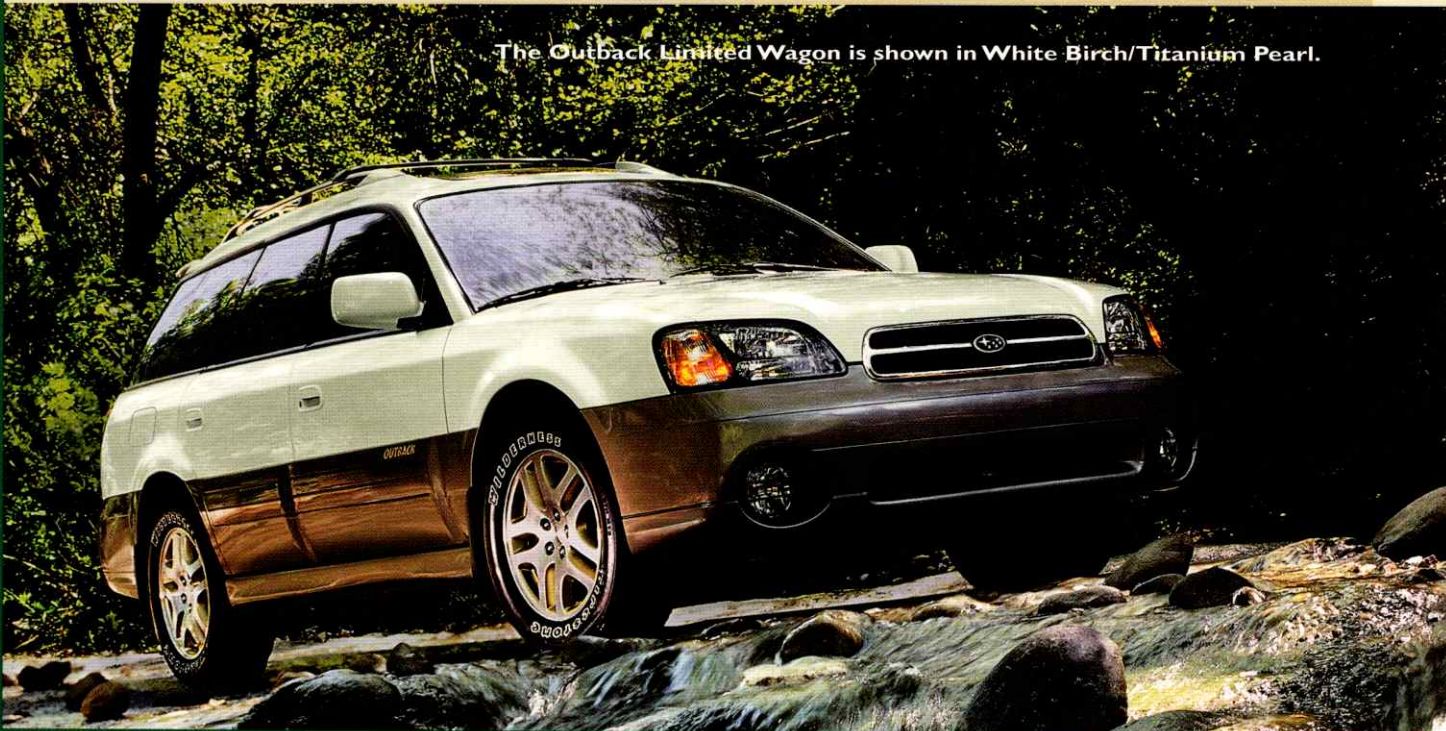
But while a rush of latecomers and wanna-bes desperately try to play catch up, the Subaru Outback models remain comfortably in the lead, thanks to new innovations, new enhancements and a new kind of driving experience.

So follow us, Canada. After all, everyone else is.



The Outback Sedan is shown in White Birch/Titanium Pearl.

Rugged, yes. But luxury still abounds in the Outback Limited.



The Outback Limited Wagon is shown in White Birch/Titanium Pearl.

## ENGINE

Horizontally opposed, 4 cylinders, sequential multipoint fuel injection

### Outback, Outback Limited and Sedan

Low Emissions Vehicle (LEV) standards  
2.5-litre SOHC, 16-valve LEV engine  
165 hp @ 5,600 rpm  
166 lbs-ft torque @ 4,000 rpm

### Outback Sport

Low Emissions Vehicle (LEV) standards  
2.2-litre SOHC, 16-valve LEV engine  
142 hp @ 5,600 rpm  
149 lbs-ft torque @ 3,600 rpm

## TRANSMISSION

Manual, 5-spd (5MT) ..... standard on Outback and Outback Sport

Automatic with gate-type shifter,  
4-spd electronic (4EAT) ..... standard on Outback Limited Wagon and Sedan,  
available on Outback

Automatic, 4-spd electronic (4EAT) ..... available on Outback Sport

## DRIVETRAIN

Full-time All-Wheel Drive ..... standard on all models  
Limited-slip rear differential (viscous type) ... standard on all models (except Outback Sport)

## CHASSIS

Suspension	4-wheel fully independent, raised
Front:	MacPherson-type strut with coil spring (all models)
Rear:	Multilink with coil spring (Outback, Outback Limited Wagon and Sedan models only) MacPherson-type strut, with coil spring (Outback Sport)
Brakes	ABS, 4-wheel, 4-channel, 4-sensor vented discs with twin-piston calipers (all models)
Front:	solid discs power brakes (dual diagonal)
Rear:	drums (Outback Sport)
Steering	Power-assisted (engine-speed-sensing) rack-and-pinion 11.2 m minimum turning circle (curb-to-curb) (Outback, Outback Limited Wagon and Sedan models only) 10.2 m minimum turning circle (curb-to-curb) (Outback Sport)

## CAPACITIES AND WEIGHTS

Fuel tank: Outback, Outback Limited Wagon and Sedan ..... .64 litres  
Outback Sport ..... .60 litres

	SMT	4EAT
Curb weight (kg) Outback	1551	1581
Outback Limited Wagon	—	1617
Outback Sedan	—	1581
Outback Sport	1297	1324

Towing capacity: Outback, Outback Limited Wagon and Sedan models ..... 907 kg (2,000 lbs)  
Outback Sport ..... 681 kg (1,500 lbs)

## ELECTRICAL SYSTEM

Low-maintenance distributorless electronic ignition system.  
Platinum-tipped spark plugs with 100,000 km maintenance interval.

## EXTERIOR DIMENSIONS

	Outback Sport	Outback	Outback Limited Wagon	Outback Limited Sedan
Wheelbase (mm)	2520	2650	2650	2650
Ground clearance (mm)	165	185	185	185
Overall length (mm)	4375	4760	4760	4685
Overall width* (mm)	1705	1986	1986	1986
Overall height (mm)	1500***	1580**	1580**	1480

\*including outside mirrors

\*\*including roof rails

\*\*\*including sport rack

## INTERIOR DIMENSIONS

	Outback Sport	Outback	Outback Limited Wagon	Outback Limited Sedan
Front/rear				
Headroom (mm)	995/950	1020/994	977/945	967/930
Legroom (mm)	1094/825	1101/871	1101/871	1101/868
Hip room (mm)	—	1302/1319	1302/1319	1302/1319
Shoulder room (mm)	1335/1315	1368/1362	1368/1362	1368/1362
Cargo space (seats up, EPA index)	722	847	795	—
Cargo space (seats down, SAE index)	1580	1942	1942	—
Trunk space	—	—	—	351

## OUTBACK FEATURES

### SAFETY FEATURES

	Outback Sport	Outback	Outback Limited Wagon	Outback Limited Sedan
Full-time All-Wheel Drive	*	*	*	*
Limited-slip rear differential (viscous type)	—	*	*	*
ABS, 4-wheel, 4-channel, 4-sensor	*	*	*	*
Child protection rear door locks	*	*	*	*
Driver and front-passenger SRS air bags	*	*	*	*
Side air bags (SRS) driver and passenger	—	—	*	*
Ring-shaped reinforced tubular frame and chassis design	—	*	*	*
Front and rear crumple zones	*	*	*	*
Collapsible steering column	*	*	*	*
Side-impact door beams	*	*	*	*
Galvanized steel body (dual-sided)	*	*	*	*
ELR 3-point seat belts (all 4 outboard seats)	*	—	—	—
ELR 3-point seat belts (all 5 seats)	—	*	*	*
ALR seat belts (all passenger seats)	*	*	*	*
3-point front seat belts with load limiters and pretensioners with height-adjustable shoulder belt anchors	—	*	*	*

### EXTERIOR FEATURES

	Outback Sport	Outback	Outback Limited Wagon	Outback Limited Sedan
Halogen headlights; (4-lamp) aero-composite with auto-off	—	*	*	*
Protective body side cladding (3 groove style)	—	*	*	*
15" aluminum-alloy wheels with P205/60 R15, RVVL all-season tires	*	—	—	—
16" aluminum-alloy wheels with P225/60 R16 all-season tires	—	*	—	—
16" aluminum-alloy wheels with gold accent and P225/60 R16 all-season tires	—	—	*	*
Multireflector fog lights	Acc	*	*	*
Modular windshield wiper system	*	*	*	*
Intermittent windshield wipers	*	—	*	*
Variable intermittent windshield wipers	—	—	*	*
Rear intermittent wiper/washer	—	*	*	*
Rear window wiper/washer	*	—	—	—
Front wiper deicer	—	*	*	*
Glass-integrated antenna	—	—	*	*
Retractable antenna (on "A" pillar)	*	*	—	—
Power side-view mirrors	*	*	*	*
Heated side-view mirrors	*	*	*	*
Moonroof — U.V. resistant, power tilting/sliding	—	—	—	*
Moonroofs — U.V. resistant, power (twin: front tilting/rear sliding)	—	—	*	—
Sport rack system	*	*	—	—
Protective roof slats	*	*	—	—
Rear spoiler	—	*	—	—
Rear spoiler with integrated stop lamp	Dual	—	—	—

### INTERIOR FEATURES

	Outback Sport	Outback	Outback Limited Wagon	Outback Limited Sedan
Air conditioning (CFC-free)	*	*	*	*
Cruise control	*	*	*	*
Outside temperature digital display (in dash)	*	*	*	*
Dual trip odometer	—	*	*	*
Front door courtesy lamps	—	*	*	*
Dual illuminated visor mirrors	—	*	*	*
Passenger visor mirror	*	—	—	—
4-speaker AM/FM/Weather Band stereo with cassette	—	*	—	—
6-speaker AM/FM/Weather Band stereo with cassette/CD player	—	—	—	*
8-speaker AM/FM/Weather Band stereo with cassette/CD player	—	*	*	—
6-way power driver's seat	—	*	*	*
Driver lumbar support	—	*	*	*
Heated front bucket seats	—	*	*	*
60/40 split folding rear seats	*	*	*	—
Leather seat surface	—	—	—	*
Adjustable front seat headrests	*	*	*	*
3 rear seat integrated headrests	—	—	—	*
3 rear seat headrests	*	*	*	*
Leather-wrapped steering wheel and shifter	—	*	*	*
Cup holders	*	*	*	*
Power tinted windows and door locks	*	*	*	*
Woodgrain accented console	*	*	*	*
Cargo area 12-volt acc. outlet	—	*	*	—
Tilt steering column	*	*	*	*
Keyless entry	—	*	*	*

### OUTBACK H6-3.0

Standard features include a horizontally opposed 6-cylinder 3.0-litre DOHC 24-valve engine, plus 16" aluminum-alloy wheels, an 8-way power driver's seat, and a mahogany and leather steering wheel.

### OUTBACK H6-3.0 VDC

All of the above features, plus Vehicle Dynamics Control, an advanced stability system for optimal directional control. Also included is a premium McIntosh® audio sound system.

### KEY

\* Standard — Not available Acc Available accessory

For decades, Subaru engineers have been world famous for their mastery of All-Wheel Drive technology. But what the 2001 Legacy models prove is that great engineering goes well beyond the drivetrain.

The Legacy Sedan & Wagon are the products of a unique approach to vehicle design, one which creates both better form and better function. Every square-centimetre of these stylish and sophisticated Legacy vehicles has been painstakingly crafted to enhance the driving experience, while still pleasing the eye. It's a combination that more and more Canadians are finding attractive.

The 2001 Legacy line incorporates a host of thoughtful engineering touches, from the unique "boxer" engine configuration that creates a lower centre of gravity and more control, to the ergonomic control panels providing greater driving comfort. But for all the intelligent thought behind the Legacy design, it's the sleek European styling that will surely capture your soul.

Impressive engineering. Impassioned good looks. That's the 2001 Subaru Legacy.



The Brighton Wagon is shown in Timberline Green Pearl.



The control panel of the GT Limited invites you to drive.



The Legacy GT Limited Sedan is shown in Titanium Pearl.

## ENGINE

Horizontally opposed, 4 cylinders, sequential multipoint fuel injection

Low Emissions Vehicle (LEV) standards  
2.5-litre SOHC, 16-valve engine  
165 hp @ 5,600 rpm  
166 lbs-ft torque @ 4,000 rpm

## TRANSMISSION

Manual, 5-spd (SMT) ..... standard on Brighton, L Wagon and GT Sedan

Automatic, 4-spd (4EAT) ..... standard on LS Sedan, GT Limited Sedan and GT Wagon  
available on Brighton, L Wagon and GT Sedan

## DRIVETRAIN

Full-time All-Wheel Drive ..... standard on all models  
Limited-slip rear differential (viscous type) ..... standard on GT models

## CHASSIS

Suspension ..... 4-wheel fully independent  
Front: MacPherson-type strut, with coil spring  
Rear: Multilink with coil spring

Brakes ..... ABS, 4-wheel, 4-channel, 4-sensor  
Front: vented discs with twin-piston calipers on all models  
Rear: drums on Brighton, solid discs on all other models

Steering ..... Power-assisted (engine-speed-sensing) rack-and-pinion  
10.8 m minimum turning circle (curb-to-curb)

## CAPACITIES AND WEIGHTS

Fuel tank: 64 litres

		SMT	4EAT
Curb weight (kg)	L Sedan	1501	1501
	GT Sedan	1513	1542
	GT Limited	1554	1510
	Brighton Wagon	1481	1510
	L Wagon	1513	1542
	GT Wagon	1590	1590
Towing capacity		907 kg (2,000 lbs)	

## ELECTRICAL SYSTEM

Low-maintenance distributorless electronic ignition system.  
Platinum-tipped spark plugs with 100,000 km maintenance interval.

## EXTERIOR DIMENSIONS

	Sedan	Wagon
Wheelbase (mm)	2650	2650
Ground clearance (mm)	155	160
Overall length (mm)	4685	4760
Overall width (mm)	1745*	1745*
Overall height (mm)	1415	1435 (1525 inc. roof rails)

\*1956 including outside mirrors

## INTERIOR DIMENSIONS

Front/rear	Sedan	Wagon
Headroom (mm) (Brighton, L)	987/930	1020/994
Headroom (mm) (GT)	967/930	977/945
Legroom (mm)	1101/868	1101/871
Shoulder room (mm)	1368/1362	1368/1362
Hip room (mm)	1302/1319	1302/1319
Trunk space	351	—
Cargo space (seats down, SAE index)	—	1942

## LEGACY FEATURES

### SAFETY FEATURES

	Brighton Wagon	L Wagon/Sedan	GT Wagon/Sedan	GT Limited Sedan
Full-time All-Wheel Drive	—	—	•	•
Limited-slip rear differential (viscous type)	—	—	•	•
ABS, 4-wheel, 4-channel, 4-sensor	•	•	•	•
Child protection rear door locks	•	•	•	•
Driver and front-passenger SRS air bags	•	•	•	•
Driver and front-passenger SRS side air bags	—	—	—	—
Collapsible steering column	•	•	•	•
Front and rear crumple zones	•	•	•	•
Ring-shaped reinforced tubular frame and chassis design	•	•	•	•
Side-impact door beams	•	•	•	•
Galvanized steel body (dual-sided)	•	•	•	•
ELR 3-point seat belts (all 5 seats)	•	•	•	•
ALR seat belts (all 4 passenger seats)	•	•	•	•
3-point front seat belts with load limiters and pretensioners with height-adjustable shoulder belt anchors	•	•	•	•

### EXTERIOR FEATURES

	Brighton Wagon	L Wagon/Sedan	GT Wagon/Sedan	GT Limited Sedan
Halogen headlights: (2-lamp) aero-composite multireflector	•	•	—	—
Halogen headlights: (4-lamp) aero-composite multireflector	—	—	•	•
Auto-off feature headlights	•	•	•	•
Front grille: Chrome-plated frame	—	—	•	•
Colour-keyed ground effects	—	—	•	•
15" steel wheels with full wheel covers and P195/60 R15, all-season tires	•	—	—	—
15" steel wheels with full wheel covers and P205/60 R15 all-season tires	—	•	—	—
16" aluminum-alloy wheels with P205/55 R16 all-season tires	—	—	•	•
Multireflector fog lights	Acc	Acc	•	•
Modular windshield wiper system	•	•	•	•
Intermittent windshield wipers	•	•	—	—
Variable intermittent windshield wipers	—	—	•	•
Front wiper deicer	—	—	•	•
Rear window intermittent wiper/washer	•	w/o	w/o	—
Glass-integrated antenna	—	—	•	•
Retractable antenna	•	•	•	•
Power side-view mirrors (body colour GT)	•	•	•	•
Heated side-view mirrors	—	•	•	•
U.V. resistant Moonroof — power tilting/sliding	—	—	s/o	—
U.V. resistant Moonroofs — power (twin: front tilting/rear sliding)	—	—	w/o	—
Sport rack system	—	Acc w/o	Acc w/o	—
Step roof	•	w/o	w/o	—

### INTERIOR FEATURES

	Brighton Wagon	L Wagon/Sedan	GT Wagon/Sedan	GT Limited Sedan
Air conditioning (CFC-free)	•	•	•	•
Cruise control	—	•	•	•
Outside temperature digital display (in dash)	—	•	•	•
Dual trip odometer	•	•	•	•
Door courtesy lights	—	—	•	•
Dual illuminated visor mirrors	—	—	•	•
Driver's visor mirror	—	•	—	—
2-speaker AM/FM stereo with cassette	•	•	—	—
4-speaker AM/FM stereo with cassette	—	•	•	•
6-speaker AM/FM/Weather Band/cassette/CD stereo	—	—	—	—
Heated front seats	—	•	•	•
6-way power adjustable driver's seat	—	•	•	•
Driver's seat lumbar support	—	•	•	•
Reclining front bucket seats	•	•	•	•
Leather seat surface	—	—	—	—
60/40 split folding rear seats	•	w/o	w/o	—
Front seat adjustable headrests	•	•	•	•
Rear seat headrests (3)(removable on wagons)	—	•	•	•
Leather-wrapped steering wheel and shifter	—	—	•	•
Woodgrain accented console	—	—	•	•
Rear centre armrest with pass-thru	—	s/o	s/o	—
Front map lights	—	•	•	•
Power tinted windows	•	•	•	•
Power door locks	•	•	•	•
Cup holders (2 front/2 rear)	•	•	•	•
Cargo area retractable cover	Acc	w/o	w/o	—
Multibox under cargo area	Acc	•	•	•
U.V. resistant glass side and rear windows	—	—	—	—
Rear window defroster	•	•	•	•
Transmission position indicator display in dash (w/4EAT)	•	•	•	•
Security system display light (in dash)	•	•	•	•
Digital clock in dash	•	•	•	•
Tilt steering wheel	•	•	•	•
Keyless entry	—	Acc	•	•

### KEY

• Standard — Not available Acc Available accessory w/o Wagon only s/o Sedan only

From the sand dunes of the Sahara to the snowy hills of Finland, the World Rally Championship represents the ultimate test of traction, control and performance. And which car won the prestigious competition three years running, beating some of the world's best nameplates along the way? An All-Wheel Drive Impreza, of course.

Now, with our impressive Impreza coupe and sedan models, we're bringing that same World Rally excitement to the streets of Canada. The fun, feisty Impreza merges the unique All-Wheel Drive technology that made us world champions with the styling and amenities you'd expect from a world-class automobile.

In fact, every Impreza model comes with full-time All-Wheel Drive which gives you the confidence and control you'll need every day in tackling those Canadian back roads or maneuvering through those slick city streets. You'll also find a large cargo bay in every Impreza. With enough space to carry your gear on a weekend getaway or your groceries on your weekly trip to the market.

So as you can see, the Subaru Impreza is a win-win proposition for you.



The Brighton Sport Wagon is shown in Sedona Red Pearl.



A 60/40 split seat expands the Outback Sport cargo bay.



The Impreza TS Sedan is shown in Blue Ridge Pearl.



The time has come for Subaru in Canada. Our conviction to offer Canadian drivers better vehicles that are built to exceed Canadian expectations is only surpassed by our belief in the wisdom of preventing accidents before they happen. Subaru full-time All-Wheel Drive is a 25-year labour of love that defines the Subaru difference in concrete terms. Our unique lineup of vehicles addresses distinctive Canadian needs for ruggedly stylish, all-weather, world-class vehicles that say as much about the individual as they do about their ability to satisfy a variety of rapidly evolving, demanding roles.

Building a better, more reliable vehicle that challenges all existing measures of performance, durability and safety is what Subaru clearly does best. Our proud Canadian network of sales and service professionals – from coast to coast – is driven to extend the value of the entire Subaru ownership experience and to ensure new levels of satisfaction that redefine the category, while creating a loyal customer base that has no rival. Subaru. Solutions for the road ahead.



*The Beauty of All-Wheel Drive.™*

The Supplemental Restraint System (air bags) affords the driver and passenger additional protection in a frontal collision. This system provides supplemental protection only, and seat belts must be worn in order to avoid injuries to out-of-position occupants upon bag deployment and provides the best combined protection in a serious accident. All illustrations and specifications in this brochure are based on the latest product information available at time of production. Some information may change due to product revisions which may have occurred after printing. Colours shown may vary due to reproduction and printing process. Subaru Canada, Inc. reserves the right to make changes at any time, without notice, to prices, colours, materials, equipment, specifications and models and to discontinue models or equipment. For complete details on product updates, warranties or the Subaru CARE program, please contact your Subaru Dealer. Subaru, Forester, Outback, Legacy, Impreza, Subaru CARE and Subaru CARE Customer Assistance for Roadside Emergencies are registered trademarks. Some vehicles are shown with U.S. equipment and accessories.

