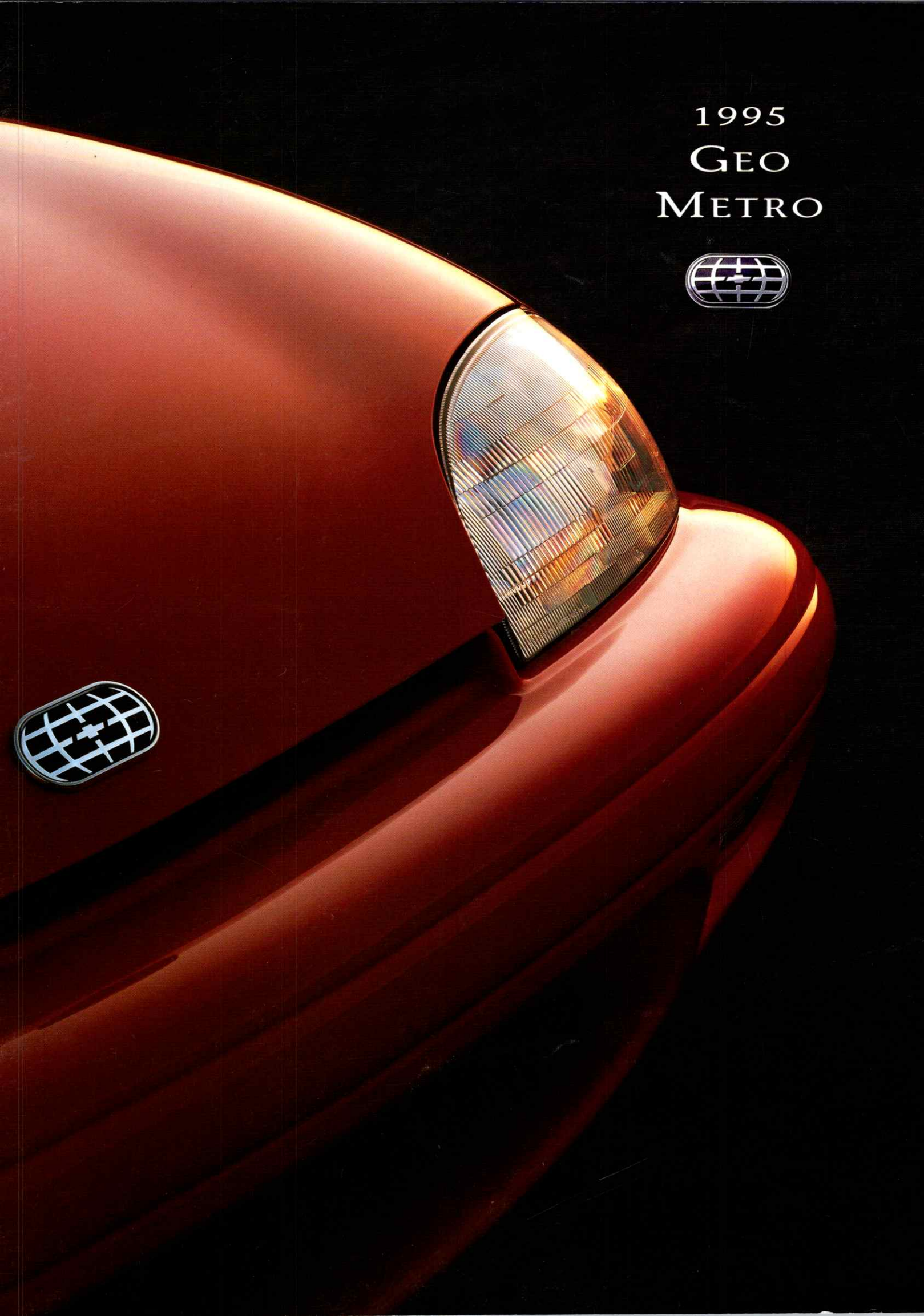
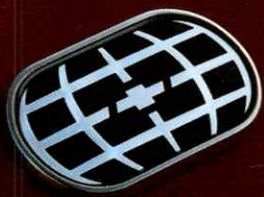


1995
GEO
METRO



1995 GEO METRO.
GETTING EVERYTHING YOU
WANT FROM A SMALL, ECONOMICAL
CAR DOESN'T HAVE TO BE
COMPLICATED.

The Geo philosophy is simple: give small-car buyers exacting quality and reliability at a highly affordable price.

The new 1995 Geo Metro is a true expression of that philosophy. It is a distinctive small car that gives you the proven quality you demand, in a car that is very economical to own. In fact, Metro's definition of value goes



Foreground: Geo Metro LSi Sedan.
Background: Geo Metro LSi Coupe.

beyond the sticker price – it is one of the most fuel efficient cars on the road. You can choose from two body styles – a sporty and practical hatchback coupe or a surprisingly roomy and comfortable 4-door sedan.

Standard safety features include dual air bags and safety-cage construction that surrounds the entire passenger compartment. A 4-wheel anti-lock brake system (ABS) is a new option for 1995.

So if you seek remarkable value, advanced design features and an excellent GM warranty, all in a car built right here in Canada, you should get to know Geo Metro for 1995.



METRO COUPE.
EVERYTHING
YOU'D EXPECT
FROM A SMALL,
PRACTICAL CAR.
AND A LOT
OF THINGS YOU
WOULDN'T.

The only thing stripped down about the '95 Metro Hatchback Coupe is the price. If you've looked at other economical small cars, you're probably thinking about what you have to give up, not what you get.

Metro will change your thinking in a hurry. Its styling is sporty. Its performance is energetic. And its versatility is truly surprising for a car its size. Perhaps best of all, it's wrapped up with the lowest sticker price of any vehicle in the Geo line.

Hit the streets in a '95 Metro Hatchback Coupe.



You'll be zipping into parking spaces and manoeuvring through traffic with the greatest of ease. That's thanks to its

innovative 1.0 litre, 3-cylinder engine. And equally as important, you'll be zipping around in a car that has set a standard for

fuel economy, consuming only 5.4L/100 km (52 mpg) in the city and 4.3L/100 km (66 mpg) on the highway*.

* Estimates based on Transport Canada approved testing methods.



IF THIS IS YOUR
KIND OF STUFF,
THIS IS YOUR
KIND OF SPACE.

The Geo Metro Hatchback Coupe is one of the most practical cars you can own. It seats four people, with more front head and rear hip room than last year.

Cargo room? Just fold down the rear seat, and raise that wide-opening rear hatch. Now you have plenty of cargo space for skis, bicycles, boardsailing equipment and lots of other things that won't fit in your average sedan. The cargo area is fully carpeted, too.

Geo Metro Coupe.

Fold down Metro Hatchback Coupe's rear seat, and you have room for up to 636 L (22.5 cu. ft.) of cargo. Bumper-level loading means you don't have to lift heavy packages over a high sill.



GEO METRO
SEDAN.
IT'S EASY TO
GET INTO.

The new Geo Metro Sedan offers room and comfort for four passengers, and a spacious trunk wrapped in a contemporary new shape.

Two versions of the sedan are available: Metro LSi Sedan and Metro Sedan (shown here). Both sedans feature composite halogen headlamps and body-colour bumpers for the kind of style you probably expect to cost more.

But style is no substitute for substance. That's why Metro Sedans are powered by a 1.3 litre 4-cylinder engine. It gives you ample



Geo Metro Sedan.



power for passing and merging. A smooth-shifting 5-speed manual transmission is standard, while automatic is optional. To keep you in firm control, Metro's 4-wheel independent suspension with front and rear stabilizer bars provide agile responsiveness.

The Sedan is roomy on the inside with real four-passenger comfort. Wide-opening rear doors add to the convenience.

Child-security rear door locks are standard, and rear-seat safety belts are designed to simplify the proper installation of child safety seats.

You expect a lot from a small car. That's why we put a lot into the Geo Metro Sedan.

INSIDE,
IT'S EASY TO
FORGET HOW
AFFORDABLE
METRO IS.

The Metro's interior offers quality features and appointments you might not expect to find in a car this size.

The front bucket seats are fully reclining and feature integral head restraints. The Coupe's front passenger seat has a handy slide-forward feature that allows easy access to the rear seat.

Metro has many thoughtful touches, such



**Standard Metro
cloth bucket seat.**



as dual map pockets, an integrated console tray with dual cupholders, and fully carpeted floor and cargo areas. Better yet, they are all

standard features that you don't have to pay extra for.

When you get behind the "soft-touch" 4-spoke steering wheel, you are



surrounded by contemporary style, quality materials, and designed-in ergonomics. The instrument panel wraps around you, so all your controls are right at your fingertips.

Gauges are analogue. Intermittent wipers and a headlamps-on reminder tone are standard convenience features. Options include air conditioning, tachometer and an AM/FM stereo with cassette tape and compact disc player.

Geo Metro LSi interior features include custom cloth seat fabrics, and on Sedan, split-folding rear seatbacks.

Geo Metro's all-new instrument panel.



SMALL IN PRICE,
BIG ON VALUE.

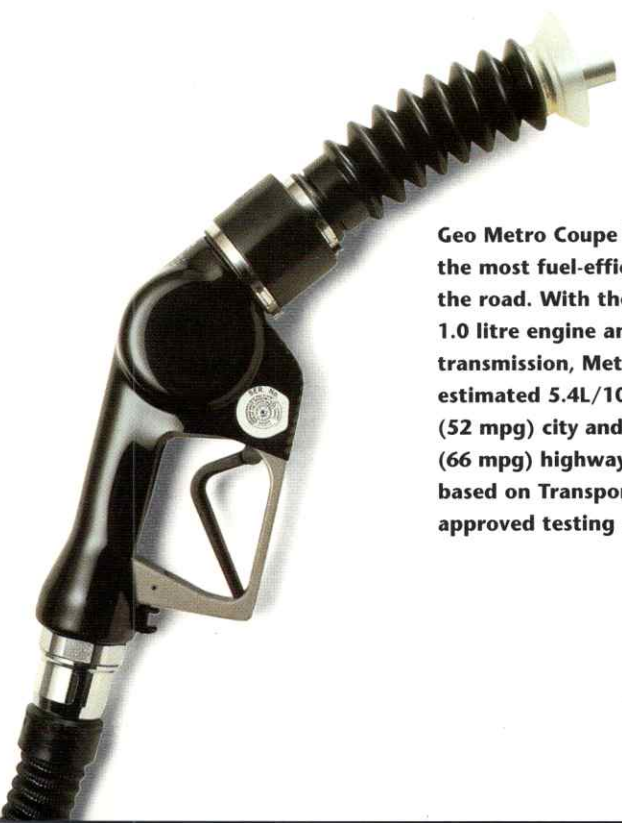


The extensive use of zinc-rich galvanneal steel helps protect Metro against body rust-through. In fact, Metro is guaranteed against outer-body rust-through for up to 6 years or 160,000 km (100,000 miles).

When you look at everything that's standard in a 1995 Geo Metro, you'll wonder how we've kept the price so

low, and you might wonder why some other cars cost so much.

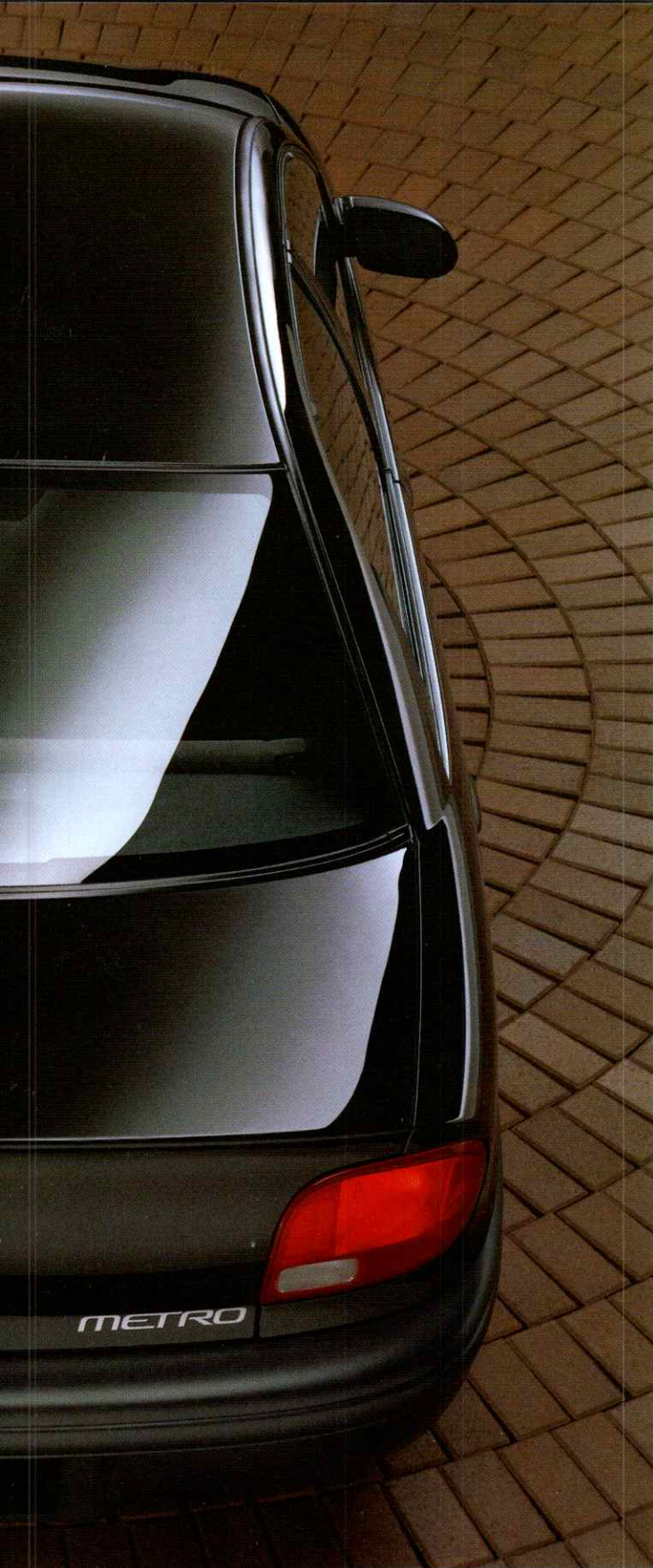
We wanted the '95 Metro to be easy to live with and a pleasure to drive.



Geo Metro Coupe is one of the most fuel-efficient cars on the road. With the standard 1.0 litre engine and 5-speed transmission, Metro gets an estimated 5.4L/100 km (52 mpg) city and 4.3L/100 km (66 mpg) highway, estimates based on Transport Canada approved testing methods.

Scotchgard™ Fabric Protector, on seat fabrics and door trim, is standard in every Geo Metro for soil resistance and easy clean up.





An AM/FM stereo with cassette tape and CD player is a new option for 1995.

Slide-out dual cupholder is standard on all models.

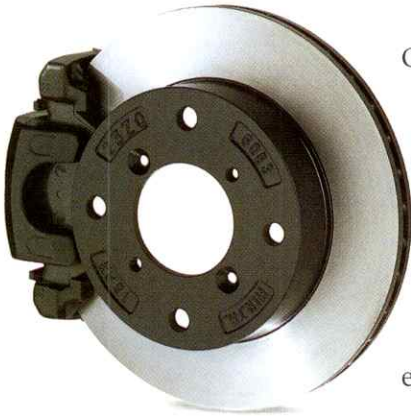


The Geo Metro stainless-steel muffler and tailpipe are designed to resist corrosion and last longer than conventional steel systems.



In-door storage pockets are a standard convenience feature on all models.

BECAUSE SAFETY IS MORE
IMPORTANT THAN EVER.

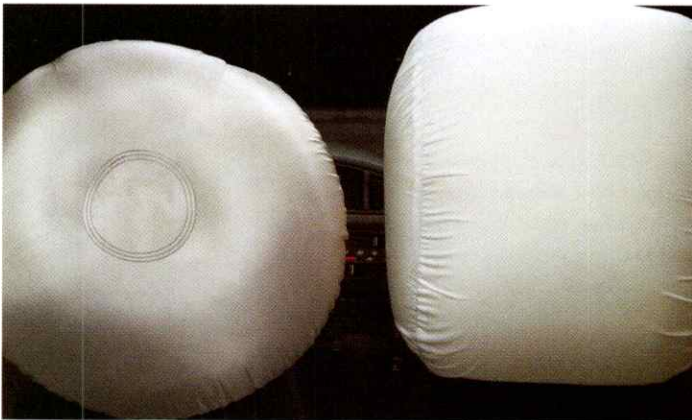


A four-wheel anti-lock brake system (ABS) is a new Metro option for 1995.

Geo Metro is designed and built to help you avoid accidents. But because accidents do happen, Geo Metro is also equipped with state-of-the-art occupant protection features. This comprehensive safety package includes the following:

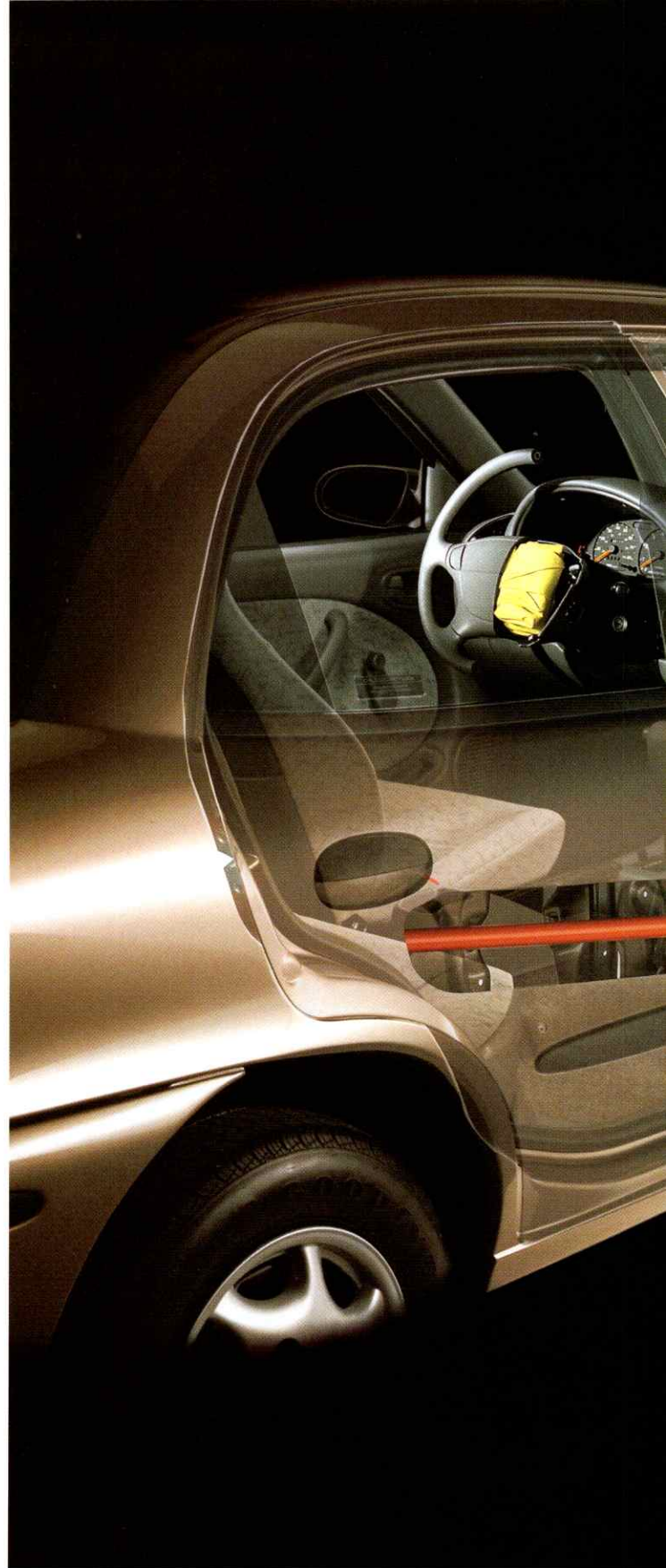
Dual air bags.

The safety of all occupants was the Geo team's number one priority. That's why driver and right-front



Dual air bags are standard in every 1995 Geo Metro.

passenger air bags are standard. In conjunction with the lap/shoulder safety belts, these air bags





A rigid steel safety cage surrounds the entire Geo Metro passenger compartment.

help protect front-seat occupants in certain frontal collisions.

Safety cage construction.

A rigid safety cage (with reinforced floor and body sills, high-strength roof construction and pillars) surrounds the entire passenger compartment of Geo Metro. Side-guard door beams, and energy-absorbing front and rear body structures complete this safety envelope.

Significantly, Geo Metro meets the 1997 U.S. Federal standards for dynamic side-impact protection.

Child-security rear door locks.

Standard on Metro Sedan, these door locks, when engaged, prevent the rear doors from being opened from the inside.

Optional ABS.

A GM-developed 4-wheel anti-lock brake system (ABS) is a new Geo Metro option for 1995. ABS is an enhancement to the Metro's normal brake system. It enhances a driver's ability to steer around objects during hard braking. It helps stop the vehicle in a straight line and prevents skidding when braking on most slippery surfaces.

THE PRICE MAY BE
OLD-FASHIONED BUT THE
TECHNOLOGY ISN'T.



No, the Geo Metro does not share a chassis or powertrain with a Formula 1 race car. And it isn't filled with glitzy frills that cost extra and that you have no use for in the first place. What the Geo Metro

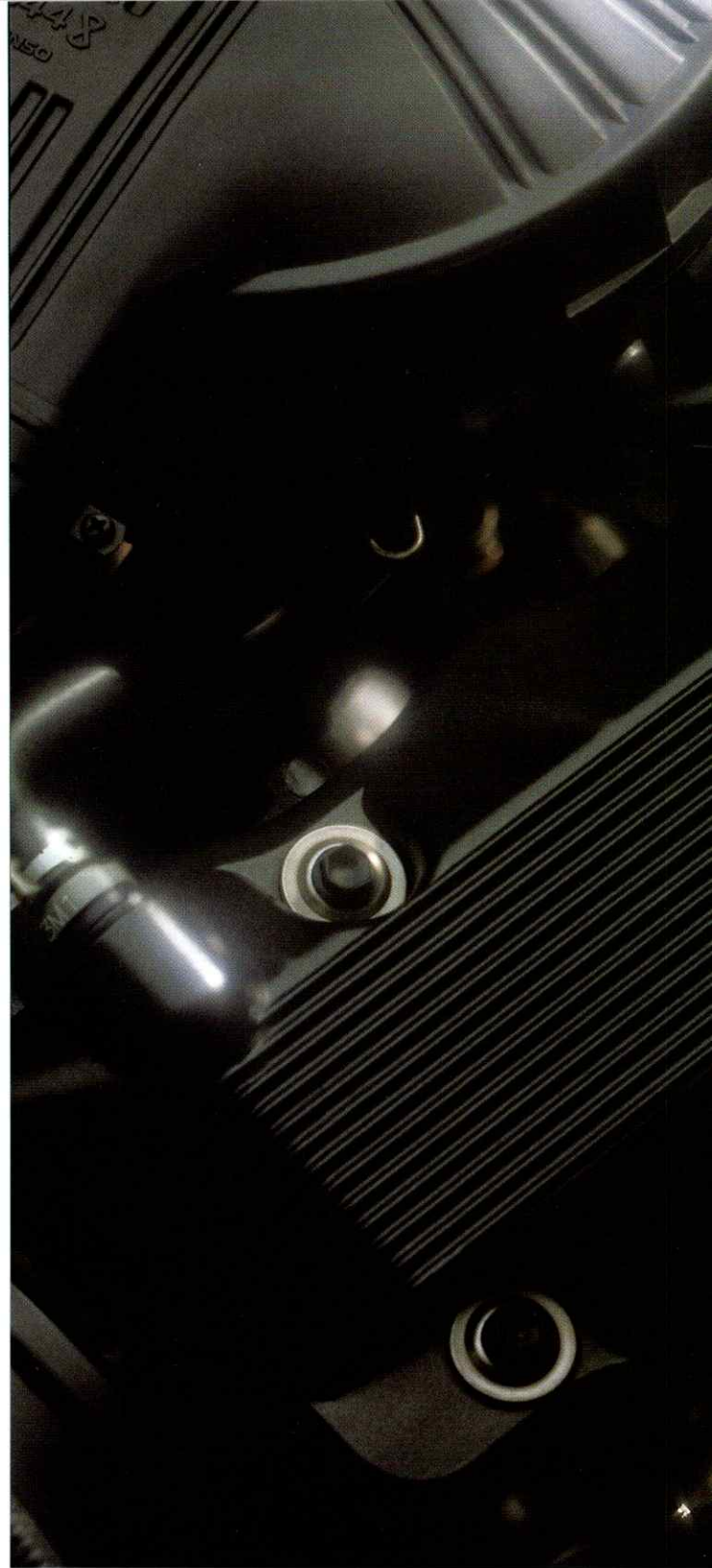


All Metro models feature an agile and responsive 4-wheel independent suspension.

does have is technology that will make a difference to the way you drive.

1.3 litre 4-cylinder engine.

This 70-hp engine is standard in Metro Sedans and Metro Coupes equipped with optional automatic transmission. Features include a single-overhead camshaft design for responsive performance through a wide rpm range, all-aluminum construction for an impressive power-to-weight ratio, and a timing belt that is designed to last up to 160,000 km, requiring less maintenance and saving you money in the long run. The 1.3 litre engine is offered in the Sedan with your choice of a standard 5-speed manual transmission or an optional



3-speed automatic.

1.0 litre 3-cylinder engine.

This proven single-overhead cam engine is standard in Metro Hatchback Coupe. It is complemented

by the standard, smooth-shifting 5-speed manual transmission.

4-wheel independent suspension.

Metro feels solid and substantial on the highway,



thanks to a sophisticated 4-wheel independent suspension design. Other reasons for Metro's confident road manners include new front and rear stabilizer bars, and computer-

selected front and rear coil springs.

Designed-in quiet ride.

Metro's new level of quiet and refinement is due to a reinforced, rigid body structure with a strong

cross-car beam bolted just beyond the dash that's designed to squelch squeaks and rattles.

Factory "test drive".

Before any new Metro leaves the assembly plant, it receives what our engineers call Dynamic Vehicle Testing (DVT). In this process, the car is placed on dynamometer rollers and run to a simulated speed of over 105 km/h. The engine, brakes, transmission shift points, air conditioning, and electronics are all checked.

Environmentally concerned.

The manufacture and use of Metro consumes less of the world's natural resources than the average new car. The optional air conditioning uses non-ozone-depleting CFC-free refrigerant, and all plastic parts weighing more than 100 grams are labelled for recycling.



5-speed manual transmission is standard on all Metro models.



A 3-speed automatic transmission is optional on all models.

The Metro assembly plant, located in Canada, is one of the most environmentally advanced automotive facilities in North America. This plant recycles raw materials and converts them to other uses right on site. In fact, a full 93.6% of all waste generated in the assembly process is recycled. That saves 115,000 trees, 4 million litres of oil and 280 million kWh of electricity. That all adds up to one more reason you can feel good about driving a Metro.

GEO METRO

SPECIFICATIONS

MODEL AVAILABILITY



Metro LSi Coupe, base Coupe not shown.



Metro LSi Sedan, base Sedan not shown.

ENGINES

Type (Coupe)	1.0L L3 with TBI
Horsepower	55 @ 5700 rpm
Torque	58 @ 3300 rpm
Type (Coupe, Sedan)	1.3L L4 with TBI
Horsepower	70 @ 6000 rpm
Torque	74 @ 3300 rpm

TOWING

Trailer towing is not recommended with Metro.

DIMENSIONS, MM (IN.)	COUPE		SEDAN	
	MM	(IN.)	MM	(IN.)
Wheelbase	2365	(93.1)	2365	(93.1)
Length	3795	(149.4)	4165	(164.0)
Width	1590	(62.6)	1590	(62.6)
Height	1390	(54.7)	1407	(55.4)
Front tread	1385	(54.5)	1385	(54.5)
Rear tread	1360	(53.5)	1360	(53.5)

INTERIOR, MM (IN.)	FRONT/REAR			
	FRONT	REAR	FRONT	REAR
Head room	993/915	(39.1/36.0)	999/948	(39.3/37.3)
Leg room	1079/834	(42.5/32.8)	1079/834	(42.5/32.8)
Shoulder room	1242/1242	(48.9/48.9)	1245/1227	(49.0/48.3)
Hip room	1199/1115	(47.2/43.9)	1190/1090	(46.9/42.9)

CAPACITIES/WEIGHT

Luggage, rear seat up, L (cu. ft.)	238	(8.4)	292	(10.3)
Luggage, rear seat down, L (cu. ft.)	636	(22.5)	NA	
Fuel tank, L (gal.)	40	(8.8)	40	(8.8)
Curb weight (estimated), kg (lb.)	794	(1750)	854	(1883)

STANDARD AND OPTIONAL EQUIPMENT

MECHANICAL	3 Door Coupe	LSi 3 Door Coupe	4 Door Sedan	LSi 4 Door Sedan
Battery – Delco Freedom II	S	S	S	S
Brakes – power, front disc/rear drum	S	S	S	S
Brake/transmission shift interlock feature (automatic transmission only)	S	S	S	S
Drive – front-wheel	S	S	S	S
Engine – 1.0 litre L3 with TBI	S	S	–	–
Engine – 1.3 litre L4 with TBI	O*	O*	S	S
Exhaust system – stainless steel**	S	S	S	S
Steering – manual, rack-and-pinion	S	S	S	S
Suspension – 4-wheel independent	S	S	S	S
Transmission – 5-speed manual with overdrive	S	S	S	S

* Requires automatic transmission.

** Muffler and tailpipe only

EXTERIOR

Bumpers – painted body-colour				
with dark gray rub strips	S	S	S	S
Glass – tinted	S	S	S	S
Headlamps – composite halogen	S	S	S	S
Headlamps – Daytime Running Lamps				
with instrument panel indicator	S	S	S	S
Mirrors – dual, left remote, right manual	S	S	S	–
Mirrors – dual, left and right remote	–	O	–	S
Mouldings – bodyside, dark gray	O	S	S	S
Tires – P155/80R13 all-season blackwall	S	S	S	S
Wheels – 13" x 4.5" steel with full wheel covers, 3-spoke	S	–	S	–
Wheels – 13" x 4.5" steel with full wheel covers, 7-spoke	–	S	–	S

INTERIOR

Air bags – driver and front passenger	S	S	S	S
Console – front floor with storage tray	S	S	S	S
Defogger – electric rear-window	S	S	S	S
Door locks – rear door, child-security	–	–	S	S
Fabric – Scotchgard™ Protector	S	S	S	S
Fuel filler door release – remote	–	–	–	S
Hatch/trunk release – remote	O	O	S	S
Head restraints – front-seat, integral	S	S	S	S
Instrumentation – analogue cluster (includes speedometer, coolant temperature and fuel gauges)	S	S	S	S
Instrumentation – trip odometer	O	S	S	S
Lamp – trunk	–	–	–	S
Map pockets – front door	S	S	S	S
Seat – front passenger "easy-entry" feature	S	S	–	–

INTERIOR (CONTINUED)

	3 Door Coupe	LSi 3 Door Coupe	4 Door Sedan	LSi 4 Door Sedan
Seats - cloth high-back reclining bucket seats	S	-	S	-
Seats - custom cloth high-back reclining bucket seats	-	S	-	S
Seats - full-folding rear seatback	S	S	S	-
Seats - split-folding rear seatbacks with pass-through	-	-	-	S
Steering wheel - 4 spoke, urethane	S	S	S	S
Windshield wipers - intermittent	-	S	S	S

PREFERRED EQUIPMENT GROUP PACKAGES

	3 Door Coupes 1SB/1SD
Floor mats - front and rear	■
Hatch release - remote	■
Mirrors - dual, left and right remote (LSi only)	■
Security cover - cargo	■
Wiper/washer - rear-window	■

ADDITIONAL INDIVIDUAL OPTIONS

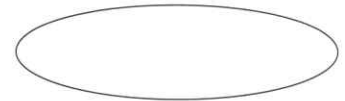
	Coupes	Sedans
Air conditioning - manual (with CFC refrigerant)	O	O
Brakes - anti-lock braking system (ABS), 4-wheel	O	O
Door locks - power	-	O
Engine - 1.3 litre L4 with TBI	O*	S
Floor mats - front and rear, carpeted	O	O
Instrumentation - tachometer	O†	O
Mouldings - bodyside, dark gray (base Coupe)	O	S
Radio - Delco ETR AM/FM stereo, seek up/down, clock and 4-speaker sound system	O	O
Radio - Delco ETR AM/FM stereo, seek up/down, program scan, auto-reverse cassette tape player, clock and 4-speaker sound system	O	O
Radio - Delco ETR AM/FM stereo, seek up/down, program scan, auto-reverse cassette tape and compact disc player, clock and 4-speaker sound system	O	O
Steering - power, rack-and-pinion	-	O
Transmission - 3-speed automatic	O**	O

* Requires automatic transmission.

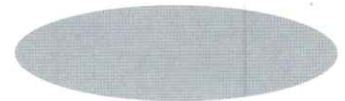
** Requires 1.3L L4 engine.

† Includes trip odometer on Hatchback Coupe.

EXTERIOR COLOURS



16 - White



15 - Silver Sage Metallic



19 - Black Licorice



21 - Dark Grape Metallic



32 - Scuba Blue Metallic



45 - Tropical Green Metallic



49 - Sky Blue Metallic



75 - Brilliant Red Metallic



81 - Bright Red



DOWN THE ROAD, GEO STANDS BEHIND
EVERY VEHICLE IT BUILDS.

When you take delivery of your new Geo Metro, you're getting more than an excellent new car. You're getting a commitment from the entire Geo organization to treat you as a valued customer.

We're proud to say that no import or domestic car company offers as large a dealer network as Chevrolet/Geo. Wherever you go in your new Geo, it's good to know that, if you should ever need it, service is always as near as a Chevrolet/Geo dealer.

Simply stated, we want your Geo to be a pleasure

to own, from the day you buy it to the day you sell it. And if we're successful, we hope you'll come back and buy another Geo from us.

As a Geo owner, you are covered by a comprehensive owner-protection plan that includes all of the following:



GM TOTAL™ WARRANTY
The GM 3-year/60,000 km TOTAL™ Warranty (whichever comes first) covers complete vehicle repairs for all 1995 Geo Metros,

including parts and labour, to correct any defects in material or workmanship occurring during the warranty period. Warranty features include air conditioning repair, towing, no-cost warranty transfer, and 5-year/80,000 km (whichever comes first) emissions control system coverage. Regular maintenance is not included. See your Chevrolet/Geo dealer for terms of this limited warranty.

**24-HOUR GEO
ROADSIDE ASSISTANCE**
When you drive away in

your new '95 Geo Metro, the security and convenience of round-the-clock Roadside Assistance is available via a toll-free number useable anywhere in Canada or the United States. Lock your keys in the car, run out of gas, have a flat tire – whenever a problem occurs, your Geo Roadside Assistance Advisor is just a phone call away. No matter what your problem, during the warranty period*, we'll be there to get you on the road again, usually without charge.

*3-year/60,000 km (whichever comes first).

METRO

SAFETY FEATURES

COURTESY TRANSPORTATION

When you purchase or lease a 1995 Geo Metro, you will be offered Courtesy Transportation while your vehicle is serviced at your Chevrolet/Geo dealership for repairs covered under the 3-year/60,000 km GM TOTAL™ Warranty. See your Chevrolet/Geo dealer for full details.



At your Geo dealer, financing or leasing your new Geo Metro can be as easy as saying GMAC. With GMAC, financing or leasing is done right in the showroom. Terms are tailored to suit your personal needs, and you can choose your monthly payment date.



GM SmartLease is simply an alternative to traditional financing. SmartLease lets qualified customers pay for the portion of the vehicle that is used, rather than paying for the entire vehicle as you would with traditional financing. What's more, SmartLease can provide you with the following benefits: low up-front costs, low monthly payments, drive more vehicle for your money, drive a new vehicle more often, no resale risks or trade-in hassles and an option to purchase when your lease ends. Most important, there are no surprises with SmartLease. Leasing doesn't have to be a mystery, so see your dealer about the benefits of SmartLease or call 1-800-32-SMART.

Occupant Protection

- Supplemental Inflatable Restraint: manual lap/shoulder belts and air bags, driver/front passenger
- Manual lap/shoulder safety belts, rear seat positions
- Energy-absorbing steering column
- Energy-absorbing instrument panel
- Interlocking door latches
- Folding front-seat locks, manual (2-door models)
- Safety armrests
- Break-away inside rearview mirror
- Security door locks and door-retention components
- Laminated windshield glass, urethane-bonded
- Head restraints, front, adjustable or integral
- Side-guard door beams
- Passenger-guard inside door-lock handles
- Front and rear crush zones
- Child security rear-door locks (4-door models)

Crash Avoidance

- Automatic Daytime Running Lamps
- Side-marker lamps and reflectors
- Parking lamps
- Four-way hazard warning flashers
- Backup lamps
- Directional signal control
- Windshield defrosters, washer and multi-speed wipers
- Inside day/night rearview mirror
- Outside rearview mirrors
- Brake system with dual master cylinder plus warning light
- Centre high-mounted stop lamp
- Safety starter switch
- Dual action hood latch
- Low-glare finish (inside windshield mouldings, wiper arms and blades, metallic steering-wheel surfaces)
- Illuminated heater and defroster controls
- Tires with built-in tread-wear indicators
- Brake/transmission shift interlock
- 8 km/h (5 mph) bumpers, front and rear

Theft Deterrence

- Visible vehicle identification number
- Laser-etched VIN plate
- Theft-deterrent steering column lock
- Remote inside hood release
- Theft-deterrent key-locking system

A WORD ABOUT...

Engines

Geos are equipped with engines produced by different operating units of GM, its subsidiaries or suppliers to GM worldwide.

Corrosion Protection

Geos are designed and built to resist corrosion. All body sheet metal components are warranted against rust-through corrosion for 6 years/160,000 kilometres. Application of additional rust-inhibiting materials is not required under the corrosion coverage and none is recommended.

Assembly

Geos are assembled by different operating units of General Motors, its subsidiaries or suppliers to GM worldwide. Geos incorporate thousands of components produced by different operating units of GM, its subsidiaries or suppliers to GM worldwide. We sometimes find it necessary to produce Geos with different or differently sourced components than originally scheduled. All such components have been approved for use in Geos and will provide the quality performance associated with the Geo name. Since some options may be unavailable when your vehicle is assembled, we suggest you verify that your vehicle includes the equipment you ordered, or if there are changes, that they are acceptable to you.

Important: A Word About This Catalogue

We have tried to make this catalogue as comprehensive and factual as possible. We reserve the right, however, to make changes at any time, without notice, in prices, colours, materials, equipment, specifications, models and availability. Since some information may have been updated since the time of printing, please check with your Geo dealer for complete details. Note: Instruments shown throughout this brochure are metric in Canada.

General Motors, GM, the GM emblem, CHEVROLET, the CHEVROLET emblem, Geo, the Geo grille emblem, Metro, ETR, and the TOTAL WARRANTY are all trademarks of General Motors Corporation and/or General Motors of Canada Limited. GMAC and SmartLease are trademarks of General Motors Acceptance Corporation.

Scotchgard is a trademark of the 3M Corporation.

Printed in Canada, August 1994.
© 1994 General Motors of Canada Limited.

TURN YOUR DREAM INTO
A REALITY.



With the GM Visa Card, your dream of owning a new GM car or truck can quickly become a reality. Every time you make a purchase using the GM Visa Card, 5% of that purchase price becomes earnings which you can apply to the final cost of your next new GM car or truck. Save up to \$3500 over 7 years without having to do anything other than charge your usual purchases to your GM Visa Card.

Plus, when you make a purchase with your GM Visa Card at any one of the GM Card Partners, you can earn an additional 5%. And there's no limit to how much you can earn with the Partners.

The GM Visa Card charges no annual fee. To receive an application, please see your local GM Dealer or call: 1-800-461-3279.

Used under license. The GM Card is a trademark of the General Motors Corporation. Up to \$500 annually or maximum of \$3500 over 7 years. No limit on Partner Earnings.

