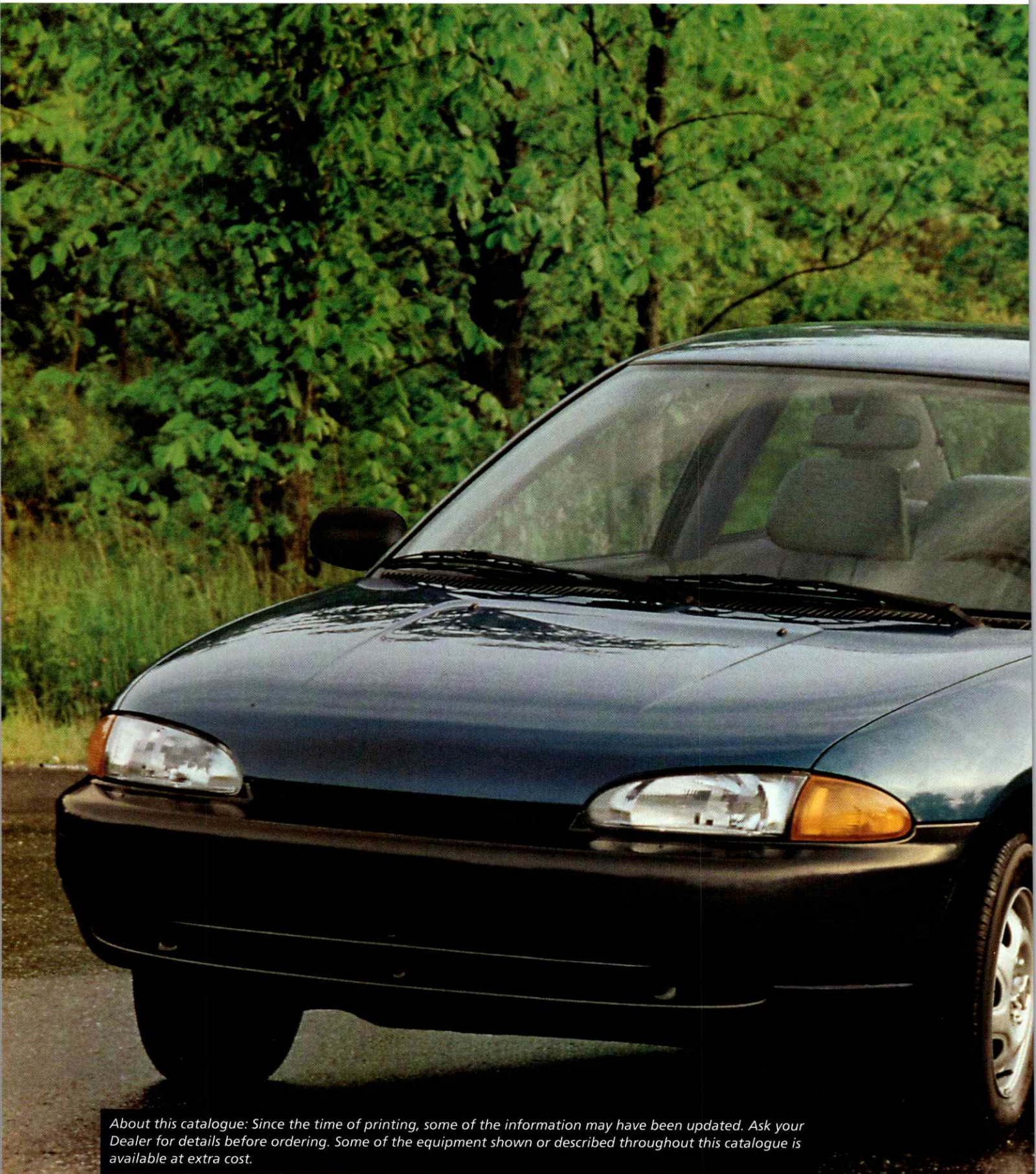


PLYMOUTH COLT
• 1994 •





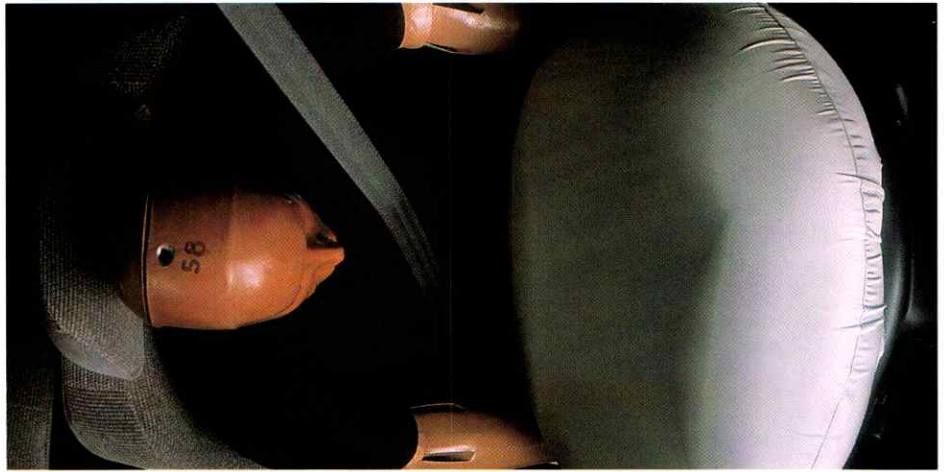
About this catalogue: Since the time of printing, some of the information may have been updated. Ask your Dealer for details before ordering. Some of the equipment shown or described throughout this catalogue is available at extra cost.



THE PRACTICAL SPORTS COUPE

The term sports coupe suggests the combination of power, responsive handling and performance, along with room for five passengers. Now, thanks to Plymouth Colt, sports coupe also means practical, affordable fun. Colt two-door is a true sports coupe – with a sophisticated 1.5-litre 12-valve MPI engine mated with a five-speed manual overdrive transmission, front-wheel drive, rack-and-pinion steering, reclining front bucket seats, and driver's side air bag.* The GL version adds power steering, larger P155/80 R13 tires, sporty "monochromatic" body-colour looks and an upgraded interior; available options include air conditioning and a rear spoiler. The bottom line? True sports coupe performance that's also economical and affordable!

**Always wear your seat belt.*



Standard driver's side air bag supplemental restraint system* is housed in the new 4-spoke steering wheel, and inflates instantly upon frontal impact for additional protection.

*Always wear your seat belt.

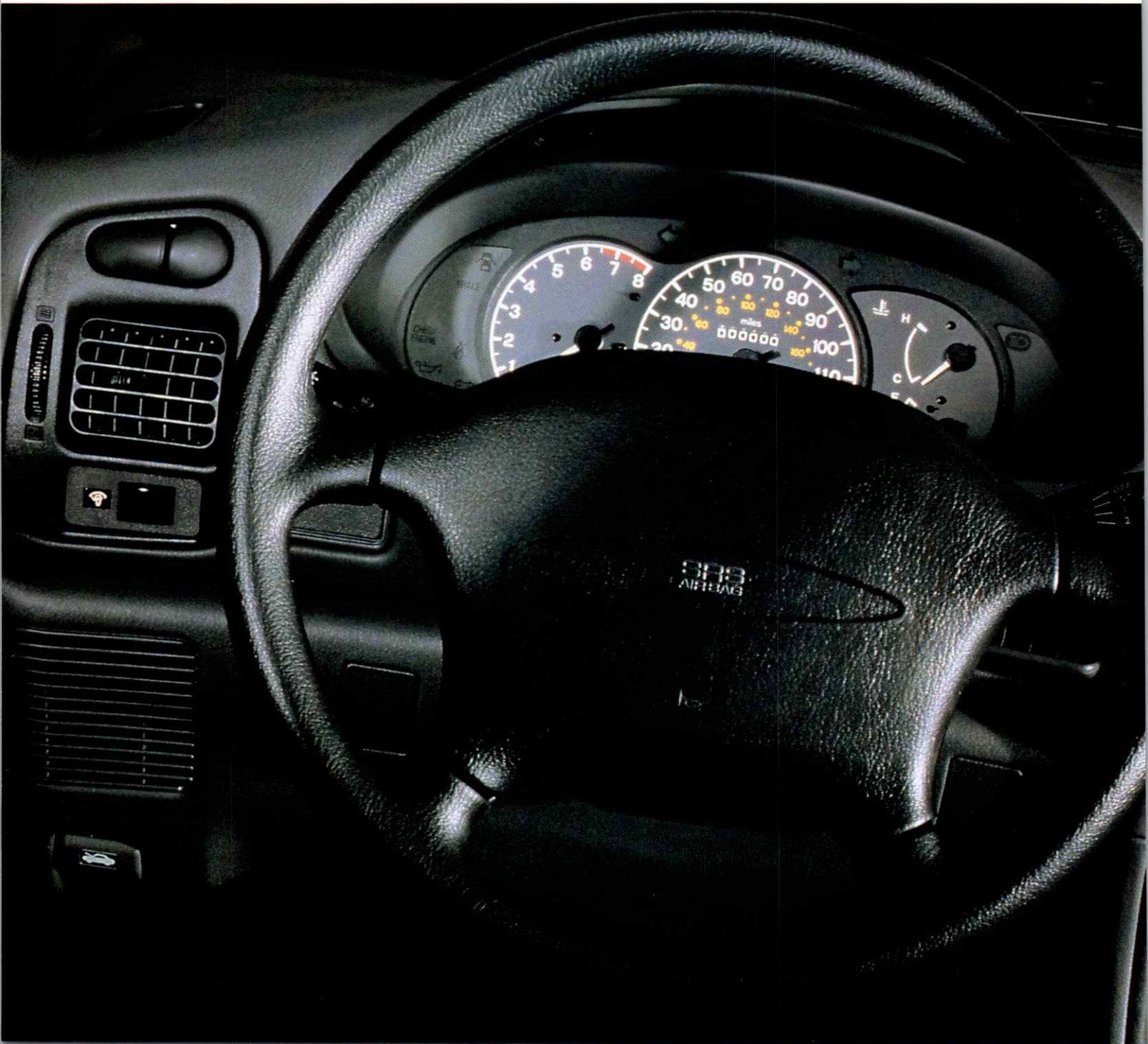


THE SEDAN THAT DOES IT ALL ... BEAUTIFULLY

Few cars in its class can match Colt four-door for combining sleek, elegant looks and surprisingly affordable price. Driver's side air bag* is standard, as are the 1.5-litre 12-valve SOHC engine, five-speed manual transmission, child-protection rear door locks, child-seat anchorage provision, floor console, electric rear window defroster, power-assisted rack-and-pinion steering and much more. For enhanced style and function, Colt GL four-door Sedan also includes dual power colour-keyed mirrors, rear deck spoiler, 14-inch wheels with full wheel covers, tinted glass, speed control and tilt steering column, variable intermittent windshield wipers, 1.8-litre 16-valve engine with five-speed manual or optional four-speed automatic transmission,[†] and Sport suspension.

*Always wear your seat belt.

[†] 1.8-litre engine with four-speed automatic available on base four-door as option.





Cloth and vinyl front highback buckets are standard on Colt 2-door coupe. Both seats feature an integral head restraint and seatback recliner. Fixed back rear seat.



Standard on Colt GL 2-door coupe and Colt 4-door sedan are full-faced cloth front low-back buckets with reclining seatbacks and adjustable headrests. Fixed back rear seat. (Split-folding rear seatbacks included in optional Convenience Package on 2-door GL.)



Colt GL 4-door Sedan includes premium full-cloth low-back front bucket seats with reclining seatbacks, adjustable headrests, and tilt/height control. The rear, high-back seat includes a split fold-down feature and centre armrest.

MORE THAN YOU'D EXPECT

Colt means more roominess, more ergonomic comfort, more of a true driver's car – but at a much lower price than you'd expect. All Colt models offer standard front reclining bucket seats, in cloth-and-vinyl on base Colt two-door, and with full-cloth facings on all other models. GL four-door Sedan standard seating adds luxury full cloth, tilt/height control, and a high-back rear seat with split fold-down feature and centre armrest. For the driver, a new four-spoke steering wheel on all models incorporates an air bag supplemental restraint system.* All Colt instrumentation is driver-oriented and sensibly legible; shown here is the instrument panel for the GL four-door Sedan which includes a tachometer and trip odometer.

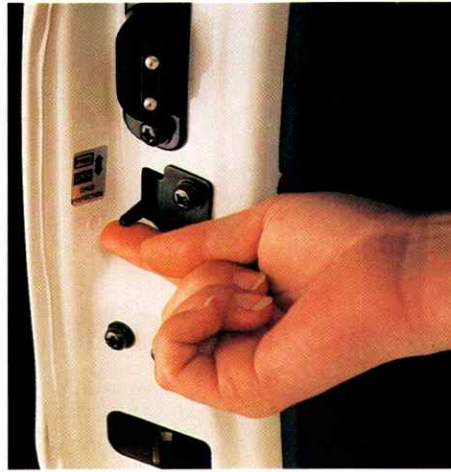
*Always wear your seat belt.





Colt Wagon All-Wheel-Drive model includes a standard 2.4-litre 16-valve SMPI engine with 5-speed manual or optional 4-speed automatic overdrive transmission. Full-time all-wheel drive automatically shifts power to the axle with the most traction – for added control in adverse driving conditions.





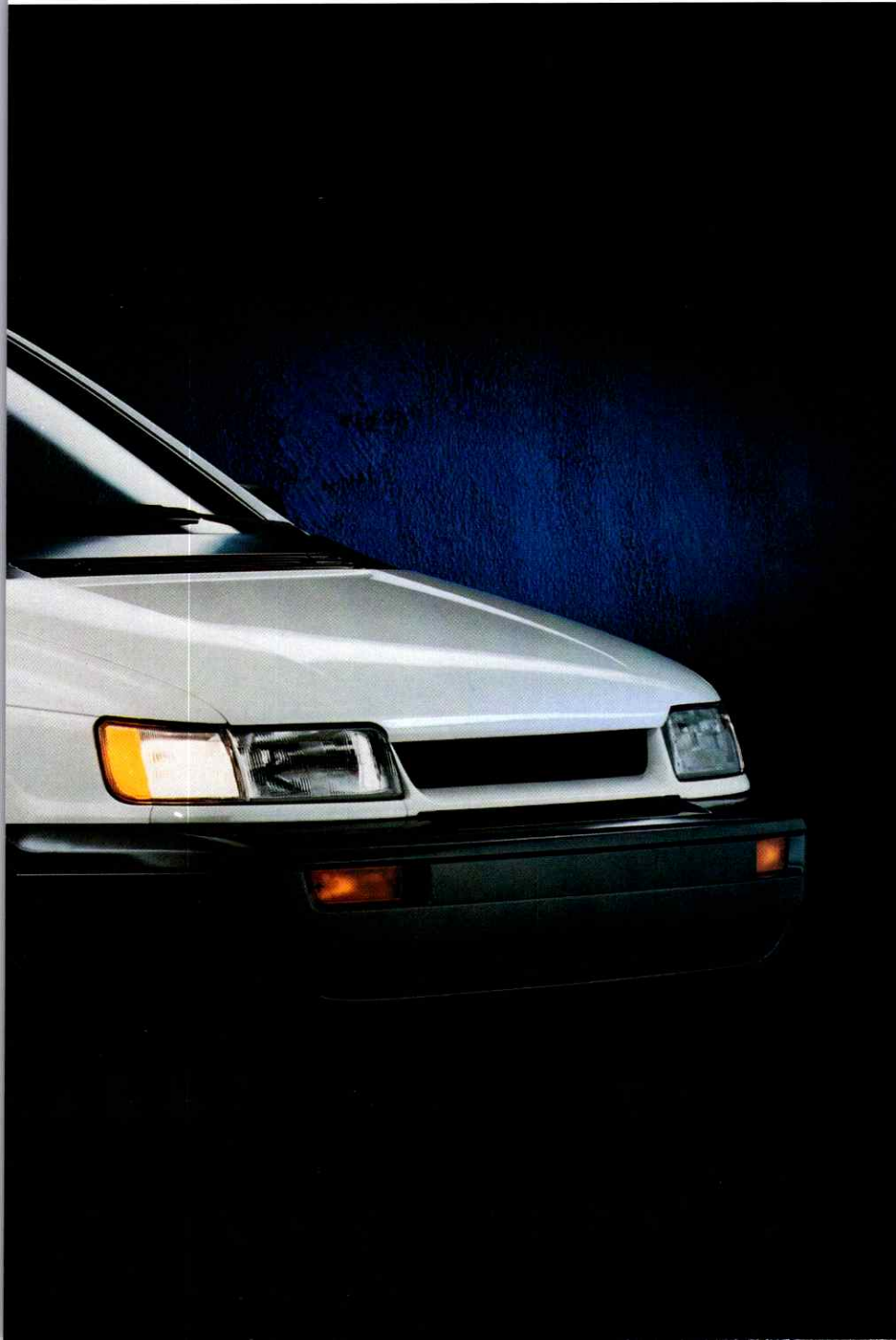
FAMILY VALUE ON WHEELS

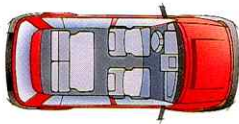
Colt Wagon: the five-seat minivan for families who want convenience, safety, and the extras that make driving fun – plus more room than most compact wagons. For convenience: a sliding side door, a flat floor, power door locks* and windows,** speed control,* cargo cover* and roof rack.* For safety: a standard driver's side air bag,† child-protection sliding side door lock, optional keyless entry system, and optional four-wheel anti-lock brakes on SE and All-Wheel-Drive models. And the extras? Standard power-assisted rack-and-pinion steering, optional air conditioning, a 2.4-litre 16-valve SMPI engine,* and optional four-speed automatic transmission. Colt Wagon: all you need, plus the extras you want, in one affordable package.

** Standard on SE and AWD, optional on Base model.*

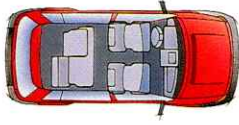
*** Standard on SE, optional on AWD, not available on Base model.*

†Always wear your seat belt.

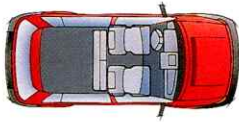




1. Five-passenger seating with reclining front buckets means Colt Wagon provides first-class family room.



2. When you want to convert to cargo space, it's as easy as 1-2-3. Colt Wagon rear seatback (split-back standard on SE and AWD models) easily folds down.



3. Turn the handle and the entire rear seat can tumble forward to provide 1920 litres (67.8 cubic feet) of space. Or remove the entire rear seat for maximum cargo room of 2240 litres (79.0 cubic feet).



Standard trim on Colt Wagon includes full-faced cloth with vinyl trim low-back front bucket seats with adjustable head restraints and reclining seatbacks. Rear seat has one-piece fold-down seatback; rear seat will fold-and-tumble or can be removed.



Standard trim on SE and AWD models includes velour, low-back bucket seats with adjustable head restraints and seatback recliners. Rear seat has split fold-down seatbacks; rear seat will fold-and-tumble or can be removed.





THE LITTLE WAGON THAT CAN

Comfort, style, and convenience are keynotes of the Colt Wagon interior. It starts with low-back front bucket seats, plus a standard centre console with storage bin and coinholder.

Three adults can fit comfortably on the rear bench seat, which can be tumbled or removed for up to 2240 litres (79 cubic feet) of cargo-carrying capacity. For the driver, the easy-to-use and easy-to-read instrument cluster gauges and controls include indicator lights arranged along the bottom, standard driver's side air bag* housed in the steering wheel, and standard conveniences such as trip odometer, dual cup holders, inside hood release, window demisters; a power liftgate release, speed control and tachometer are also included on SE and AWD models.

**Always wear your seat belt.*

Plymouth Colt 2-Door/4-Door Selected Standard and Optional Features

	Colt 2-Door	Colt GL 2-Door	Colt 4-Door	Colt GL 4-Door
AIR BAG Driver's side (SRS)	S	S	S	S
AIR CONDITIONING Bi-level	NA	0	0	0
ALTERNATOR 75-amp	S	S	S	S
ASH RECEIVER Front	S	S	S	S
ASSIST GRIP Above passenger door(s) (three on 4-door models)	NA	S	S	S
BATTERY Maintenance-free, heavy-duty	S	S	S	S
BRAKES Power-assisted, front disc, rear drum	S	S	S	S
CHILD-SEAT ANCHORAGE PROVISION	S	S	S	S
CIGARETTE LIGHTER	NA	S	S	S
COAT HOOKS (2) (One on Colt 2-door base)	S	S	S	S
CONSOLE Floor	S	S	S	S
CORROSION PROTECTION Extensive use of galvanized steel, lower bodyside urethane stone chip-resistant coating; front fender liners in high impact plastic	S	S	S	S
CUP HOLDERS Dual, stowed in lower instrument panel	NA	S	S	S
DAYTIME RUNNING LIGHTS	S	S	S	S
DEFROSTER Rear window, electric	S	S	S	S
DEMISTERS Front side windows	S	S	S	S
DOOR Side impact beams	S	S	S	S
DOOR LOCKS Rear, child-protection (4-door models)	NA	NA	S	S
DOOR TRIM PANELS With armrests	S	S	S	S
EXHAUST SYSTEM Stainless steel	S	S	S	S
GLASS Tinted	NA	0	0	S
HEADLAMPS Halogen, aerostyle	S	S	S	S
HEAT DUCTS Rear	NA	NA	S	S
HOOD RELEASE Inside	S	S	S	S
HORNS Dual	NA	NA	NA	S
INSTRUMENTATION Includes warning lights for door ajar, parking brake, brake fluid level, seat belt warning, check engine, alternator warning, oil pressure warning	S	S	S	S
Trip odometer and low fuel light	NA	S	S	S
Tachometer (with 5-speed manual transmission)	NA	NA	NA	S
LIGHTS Cargo compartment	NA	0	S	S
MAP POCKETS Front door	NA	S	S	S
MIRRORS Inside, day/night, rearview	S	S	S	S
Inside, passenger's side visor/vanity	NA	S	S	S
Inside, driver's side visor/vanity	NA	NA	NA	S
Outside, dual manual remote control	S	S	S	NA
Outside, dual electric remote control	NA	NA	NA	S
POWER ASSISTS Door locks	NA	NA	NA	0
Windows	NA	NA	NA	0
RADIO AM/FM stereo cassette with 4 speakers ⁽¹⁾	0	0	0	0
REMOTE RELEASES Fuel door and trunk	NA	0	S	S
SEATS – FRONT High-back buckets, cloth and vinyl, reclining with integral head restraints	S	NA	NA	NA
Low-back buckets, full-face cloth, reclining with adjustable head restraints	NA	S	S	NA
Low-back buckets, premium full-face cloth, reclining with adjustable head restraints and tilt/height control	NA	NA	NA	S
SEATS – REAR Fixed back	S	S	S	NA
Split, fold-down (includes centre armrest on 4-door)	NA	0	NA	S
Passenger, easy-entry, with memory	NA	S	NA	NA

Warranty

Warranty coverage is a big part of the ownership experience. That's why Chrysler offers the industry's first owner's choice protection plan.* Choose between a 1-year/20,000-kilometre basic vehicle coverage combined with a 7-year/115,000-kilometre powertrain warranty, or a 3-year/60,000-kilometre bumper-to-bumper warranty combined with a 5-year/100,000-kilometre powertrain warranty. Your choice and with no deductible.

* See Dealer for details.

Chrysler Service Contracts

Optional Chrysler service contracts can provide owners with additional peace of mind. They are available in a variety of time and distance combinations to meet your particular ownership needs.

Financing Assistance

Chrysler Credit offers qualified buyers a wide variety of new vehicle purchase financing plans, including Retail Financing, Gold Key and College/University Graduate Plans.

The Leasing Alternative

It pays to consider the advantages of leasing. Your dealer will be pleased to discuss our wide range of available leasing options – and the benefits you may enjoy through this increasingly popular alternative to buying.

Mopar Customer Care

Your dealer has all the factory-trained technicians and the specialized equipment needed to offer you the best possible maintenance and repair services for your new vehicle.

Mopar Parts

When replacement parts are needed, be sure to specify genuine Mopar parts – the first choice of Chrysler engineers.

Mopar Accessories

To enhance the style, comfort, and function of your new vehicle, make Genuine Mopar Accessories your first choice. Designed specifically to fit right and work right for your model, they will be covered by your vehicle warranty when installed before you take delivery.

Physically Challenged Assistance Program

A program which provides assistance towards the cost of purchase and installation of adaptive driving aids or passenger equipment on new 1994 vehicles. For further information, contact your dealer.

Plymouth Colt 2-Door/4-Door Selected Standard and Optional Features

White**

Vivid Red**

*Dark Red Pearl Coat**

Light Blue Metallic Clear Coat**

Bright Blue Pearl Coat

*Dark Blue Pearl Coat**

Light Green

Dark Green Pearl Coat

*Not available on 2-door models
**Also available on Wagon models

Specifications, descriptions and illustrative material contained herein are based on authorized information. Although specifications, descriptions and illustrations were believed to be correct at the time this publication was approved for printing, accuracy cannot be guaranteed. Chrysler Canada Ltd. reserves the right to discontinue models or options at any time or change specifications and materials, equipment or design without notice and without incurring obligation. Some equipment may not be exactly as illustrated in this publication. Some of the illustrative material contained herein may show equipment that is not standard and is available only at extra cost, as factory-installed or dealer-installed. Equipment referred to as available or optional may be at extra cost. Some options are required in combination with other options. For the price of the model with the equipment you desire or verification of specifications and equipment availability contained herein, see your Chrysler Canada Ltd. Dealer.

	Colt 2-Door	Colt GL 2-Door	Colt 4-Door	Colt GL 4-Door
SEAT BELTS Front, 3-point shoulder/lap; rear, 3-point shoulder/lap at outboard seating positions, lap belt at centre position	S	S	S	S
SPEED CONTROL	NA	NA	NA	S
SPOILER Rear	NA	O	NA	S
STEERING Manual, rack-and-pinion	S	NA	NA	NA
Power-assisted, rack-and-pinion	NA	S	S	S
SUSPENSION Front: MacPherson strut; rear: independent, multi-link	S	S	S	NA
Sport – with front antisway bar and higher spring rate	NA	NA	NA	S
TILT STEERING COLUMN	NA	NA	NA	S
TIRES P145/80 R13 13" steel-belted radials, black sidewalls, All-Season	S	NA	NA	NA
P155/80 R13 13" steel-belted radials, black sidewalls, All-Season	NA	S	S	NA
P185/65 R14 14" steel-belted radials, black sidewalls, All-Season	NA	NA	NA	S
WHEELS 13" styled steel with bright centre caps	S	NA	NA	NA
13" styled steel with full hub cap	NA	NA	S	NA
13" steel with full wheel cover	NA	S	O	NA
14" steel with full wheel cover	NA	NA	NA	S
WINDSHIELD WIPERS 2-speed	S	S	NA	NA
Fixed intermittent	NA	O	S	NA
Variable intermittent	NA	NA	NA	S

S – Standard Equipment O – Optional Equipment NA – Not Available SRS – Supplemental Restraint System
(1) Dealer-installed accessory.

THIS CATALOGUE DOES NOT LIST ALL STANDARD AND OPTIONAL EQUIPMENT ITEMS; SOME OPTIONS ARE AVAILABLE ONLY IN COMBINATION WITH OTHERS, AND SOME EQUIPMENT MAY BE SUBJECT TO AVAILABILITY RESTRICTIONS. SEE YOUR DEALER FOR DETAILS.

DIMENSIONS, WEIGHTS AND CAPACITIES

	Colt 2-Door Coupe		Colt 4-Door Sedan	
	mm	in.	mm	in.
Wheelbase	2440	96.1	2500	98.4
Overall Length	4345	171.1	4420	174.0
Overall Width	1680	66.1	1680	66.1
Overall Height	1360	53.5	1360	53.5
Curb Weight – kg (lb.)	946	2085	996	2195
Passenger Capacity	5		5	
Fuel Capacity – L (Imp. gal.)	50	(11)	50	(11)

ENGINE DETAILS

	1.5-litre 4-cyl.	1.8-litre 4-cyl.
Type	SOHC 12-valve	SOHC 16-valve
Fuel Delivery	SMPI	SMPI
Ignition	Electronic	Electronic
Net Power – kW (bhp) @ rpm	69 (92) @ 6000	84 (113) @ 6000
Net Torque – N·m (lb-ft) @ rpm	126 (93) @ 3000	157 (116) @ 4500

SMPI – Sequential Multi-Point (port) Fuel Injection SOHC – Single Overhead Camshaft

FRONT-WHEEL-DRIVE ENGINE AND TRANSMISSION AVAILABILITY

	Colt 2-Door	Colt GL 2-Door	Colt 4-Door	Colt GL 4-Door
1.5-litre 4-cyl. with 5-speed manual	Standard	Standard	Standard	NA
1.5-litre 4-cyl. with 3-speed automatic	NA	Optional	NA	NA
1.8-litre 4-cyl. with 5-speed manual	NA	NA	NA	Standard
1.8-litre 4-cyl. with 4-speed automatic	NA	NA	Optional	Optional

NA – Not Available

Plymouth Colt Wagon Selected Standard and Optional Features

	Colt Wagon	Colt SE Wagon	Colt Wagon AWD
AIR BAG Driver's side (SRS)	S	S	S
AIR CONDITIONING Bi-level	0	0	0
ALL-WHEEL DRIVE Full-time with centre differential and Viscous Coupling (VCU)	NA	NA	S
ALTERNATOR 75-amp	S	S	S
BATTERY 12-volt, maintenance-free, heavy-duty	S	S	S
BRAKES Power-assisted, front disc, rear drum	S	S	S
4-wheel disc with anti-lock brakes (ABS)	NA	0	0
CARGO SECURITY COVER	0	S	S
CHILD-PROTECTION LOCK Side sliding door	S	S	S
CHILD-SEAT ANCHORAGE PROVISION	S	S	S
CONSOLE Centre with storage bin and coin holder	S	S	S
Centre armrest	NA	S	S
DAYTIME RUNNING LIGHTS	S	S	S
DEFROSTER Rear window, electric with timer	S	S	S
EXHAUST SYSTEM Stainless steel	S	S	S
GLASS Tinted, all windows	0	S	S
GLOVE BOX Front	S	S	S
HEADLAMPS Single, halogen, aerostyle; CHMSL – Centre high-mounted stop lamp	S	S	S
HEAT DUCTS Rear seat	S	S	S
INSTRUMENT CLUSTER Speedometer, odometer, trip odometer, gauges for fuel and engine coolant temperature	S	S	S
Tachometer	NA	S	S
KEYLESS ENTRY SYSTEM	NA	0	0
LIGHTS Cargo area, dome, brake fluid level warning, door/liftgate-ajar warning, engine coolant warning, fasten seat belt reminder, hazard warning system, high-beam indicator, parking brake indicator, turn signal indicator	S	S	S
LUGGAGE RACK Roof	0	S	S
MIRRORS Inside, rearview, day/night	S	S	S
Inside, passenger's side visor/vanity	S	S	S
Inside, driver's side visor/vanity	NA	S	S
Outside, dual manual	S	NA	NA
Outside, dual power	0	S	S
PAINT Two-tone	NA	0	0
POWER ASSISTS Door locks	0	S	S
Front door windows, with driver's-side one-touch-down	NA	S	0
RADIO AM/FM stereo cassette with clock, (dealer-installed – radio accommodation package is standard)	0	0	0
REMOTE RELEASES Fuel door release	S	S	S
Power tailgate lock and unlock (manually lockable handle standard)	0	S	S
SEATS – FRONT Low-back buckets, full-face cloth w/adjustable headrests and dual recliners	S	NA	NA
Low-back buckets, Premium full-face cloth w/adjustable headrests and dual recliners	NA	S	S
SEATS – REAR Bench, cloth-faced, fold-and-tumble, removable	S	NA	NA
Bench, cloth-faced, split-back, fold-and-tumble, removable	NA	S	S
SEATBACK POCKET Passenger side	NA	S	S
SEAT BELTS 3-point shoulder/lap at front and outboard positions; lap only in centre	S	S	S
SPEED CONTROL Electronic	0	S	S

Warranty

Warranty coverage is a big part of the ownership experience. That's why Chrysler offers the industry's first owner's choice protection plan.* Choose between a 1-year/20,000-kilometre basic vehicle coverage combined with a 7-year/115,000-kilometre powertrain warranty, or a 3-year/60,000-kilometre bumper-to-bumper warranty combined with a 5-year/100,000-kilometre powertrain warranty. Your choice and with no deductible.

* See Dealer for details.

Chrysler Service Contracts

Optional Chrysler service contracts can provide owners with additional peace of mind. They are available in a variety of time and distance combinations to meet your particular ownership needs.

Financing Assistance

Chrysler Credit offers qualified buyers a wide variety of new vehicle purchase financing plans, including Retail Financing, Gold Key and College/University Graduate Plans.

The Leasing Alternative

It pays to consider the advantages of leasing. Your dealer will be pleased to discuss our wide range of available leasing options – and the benefits you may enjoy through this increasingly popular alternative to buying.

Mopar Customer Care

Your dealer has all the factory-trained technicians and the specialized equipment needed to offer you the best possible maintenance and repair services for your new vehicle.

Mopar Parts

When replacement parts are needed, be sure to specify genuine Mopar parts – the first choice of Chrysler engineers.

Mopar Accessories

To enhance the style, comfort, and function of your new vehicle, make Genuine Mopar Accessories your first choice. Designed specifically to fit right and work right for your model, they will be covered by your vehicle warranty when installed before you take delivery.

Physically Challenged Assistance Program

A program which provides assistance towards the cost of purchase and installation of adaptive driving aids or passenger equipment on new 1994 vehicles. For further information, contact your dealer.

Plymouth Colt Wagon Selected Standard and Optional Features

	Colt Wagon	Colt SE Wagon	Colt Wagon AWD
STEERING Power-assisted, rack-and-pinion	S	S	S
Tilt steering column	S	S	S
SUSPENSION Front, independent MacPherson struts with coil springs; rear, semi-trailing arm with coil springs	S	S	NA
Rear stabilizer bar	O	S	S
All-wheel drive; fully independent rear (IRS)	NA	NA	S
TIRES P185/75 R14 SBR BSW All-Season	S	S	NA
P205/70 R14 SBR BSW All-Season	NA	NA	S
WHEELS 14" sport styled steel, bright caps	S	NA	NA
14" full wheel covers	O	S	S
WINDSHIELD WIPERS Front with variable intermittent wipe	S	S	S
WIPER/WASHER, LIFTGATE WINDOW With fixed intermittent wipe	O	S	S

S – Standard Equipment O – Optional Equipment NA – Not Available SRS – Supplemental Restraint System AWD – All-wheel drive

THIS CATALOGUE DOES NOT LIST ALL STANDARD AND OPTIONAL EQUIPMENT ITEMS; SOME OPTIONS ARE AVAILABLE ONLY IN COMBINATION WITH OTHERS, AND SOME EQUIPMENT MAY BE SUBJECT TO AVAILABILITY RESTRICTIONS. SEE YOUR DEALER FOR DETAILS.

DIMENSIONS, WEIGHTS AND CAPACITIES

	Colt Wagon		Colt Wagon AWD	
	mm	in.	mm	in.
Wheelbase	2520	99.2	2520	99.2
Overall Length	4280	168.5	4280	168.5
Overall Width	1695	66.7	1695	66.7
Overall Height	1575	62.1	1590	62.6
Turning Diameter – m (ft.) (curb-to-curb)	10.2	(33.5)	10.2	(33.5)
Curb Weight – kg (lb.) (base model)	1240	(2734)	1390	(3064)
Cargo Volume – Litres (cu. ft.) – behind rear seat	980	(34.6)	980	(34.6)
Rear seat tumbled forward	1920	(67.8)	1920	(67.8)
Rear seat removed	2240	(79.0)	2240	(79.0)
Passenger Capacity	5		5	
Fuel Capacity – L (Imp. gal.)	55	(12.1)	55	(12.1)

Engine Details	1.8-litre 4-cyl. 16-valve	2.4-litre 4-cyl. 16-valve balance-shaft
Type	SOHC	SOHC
Fuel Delivery	SMPI	SMPI
Ignition	Electronic	Electronic
Net Power – kW (bhp) @ rpm	84 (113) @ 6000	101 (136) @ 5500
Net Torque – N-m (lb-ft) @ rpm	157 (116) @ 4500	197 (145) @ 4250

SMPI – Sequential Multi-Point (port) Fuel Injection SOHC – Single Overhead Camshaft

FRONT-WHEEL-DRIVE AND ALL-WHEEL-DRIVE ENGINES AND TRANSMISSIONS Availability

	Colt Wagon FWD	Colt SE Wagon FWD	Colt Wagon AWD
1.8-litre 4-cyl. with 5-speed manual	Standard	NA	NA
1.8-litre 4-cyl. with 4-speed automatic	Optional	NA	NA
2.4-litre 4-cyl. with 5-speed manual	Optional	Standard	Standard
2.4-litre 4-cyl. with 4-speed automatic	Optional	Optional	Optional

NA – Not Available

CustomerOne

Innovative design. Inspired engineering. Quality production. All of these are embodied in today's Chrysler Canada vehicles. But to you, the buyer or the lessee, our efforts find their focus in just one place: your dealership.

To help ensure that your experience there will be more than satisfactory, Chrysler Canada has joined with our dealers in a nationwide educational initiative called Customer One. Its aim is to hone the skills of dealership management, sales, and service people – to better attune them to the changing needs of you, the customer.

Customer courtesy and respect is not a goal of this program – it is an imperative. Product knowledge is another essential, and it is imparted to dealership personnel through self-educating training materials, formal product training, and hands-on driving sessions.

Service personnel are involved in the Customer One process so that their understanding of an owner's needs will go far beyond just providing technical answers to mechanical problems.

Every aspect of Customer One training is aimed at making your needs as a customer the first priority and personal concern of each employee at every Chrysler Canada dealership.



For more information
contact your dealer or call:

1-800-361-3700