

# 1982 CUTLASS CIERA



*Cutlass Ciera Brougham Coupe.*

*Oldsmobile*

There's still room to do it with style.

# 1982 CUTLASS CIERA

*Introducing all-new Ciera.  
First Cutlass with front-wheel drive.*

*Cutlass Ciera isn't just another "car for the times." It's more. It is an all-new, highly efficient car designed, engineered and built for the driver and family of today.*

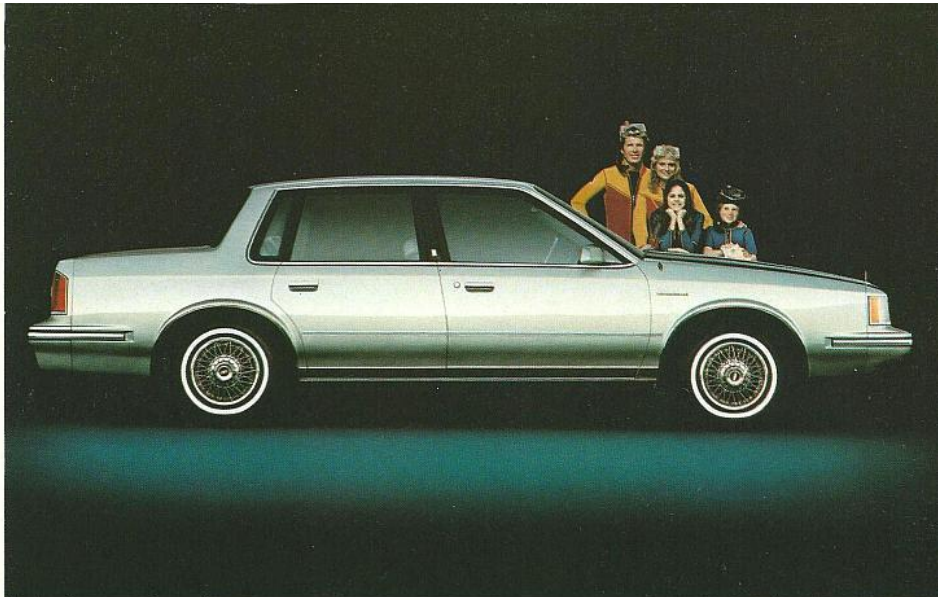
*It's our latest example of Oldsmobile craftsmanship and style. For Cutlass Ciera considers and caters to your needs for room, comfort and quality. Cutlass Ciera, after all, is an Oldsmobile.*

*Treat yourself to a test-drive. You'll discover what front-wheel drive does for Cutlass Ciera. With engine weight over the wheels that both power and steer you, Cutlass Ciera tracks straight and true on most any driving surface. Bring on the rain, sleet and snow.*

*Head for the open road and sample Cutlass Ciera's smooth, quiet ride with MacPherson strut suspension up front and a sport feel of the road.*

*And remember, you get power steering, power low-drag disc brakes, automatic transmission, side window defoggers, deluxe steering wheel, full-wheel covers, quality Delco AM radio and more—all standard.*

*Cutlass Ciera—the all-new, aerodynamically designed front-wheel drive Cutlass.*



*Cutlass Ciera Brougham Sedan.*



*Cutlass Ciera Brougham interior.*



*Cutlass Ciera LS Coupe.*



*Cutlass Ciera LS interior.*



*Cutlass Ciera standard interior.*



*Cutlass Ciera LS instrument panel.*



*Cutlass Ciera LS Sedan.*

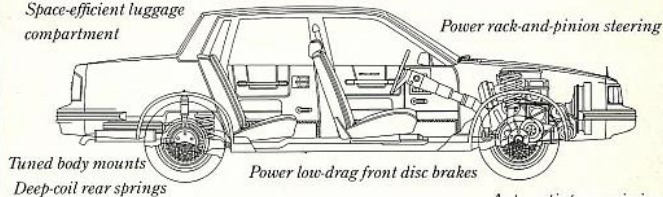


*Cutlass Ciera Sedan (foreground) and Coupe.*

## A Closer Look At The All-New Cutlass Ciera.

*Impressive head and leg room, front and rear      New aerodynamic styling  
Front-wheel drive and transverse-mounted 2.5 litre L4 engine*

*Space-efficient luggage compartment      Power rack-and-pinion steering*



*Tuned body mounts      Power low-drag front disc brakes      Automatic transmission  
Deep-coil rear springs      Extensive anti-corrosion measures      MacPherson strut front suspension  
Easy-roll tires, match-mounted to wheels*

### Exterior Dimensions:

Millimetres (Inches)	COUPE		SEDAN	
Wheelbase	2664 (104.9)		2664 (104.9)	
Length (overall)	4785 (188.4)		4785 (188.4)	
Width (overall)	1765 (69.5)		1765 (69.5)	
Height	1399 (55.1)		1399 (55.1)	
Tread—Front	1491 (58.7)		1491 (58.7)	
—Rear	1447 (57.0)		1447 (57.0)	
Fuel Tank Capacity: Litres (gals)	59.4 (13.0)*		59.4 (13.0)*	

\*Diesel: 64.3 litres (14.1 gals)

### Interior Dimensions:

Millimetres (Inches)	COUPE		SEDAN	
Hip Room—Front	1330 (52.4)		1329 (52.3)	
—Rear	1362 (53.6)		1338 (52.7)	
Shoulder Room—Front	1427 (56.2)		1427 (56.2)	
—Rear	1447 (57.0)		1427 (56.2)	
Usable Trunk Capacity: Litres (cu. ft.)	449 (15.8)		449 (15.8)	

NOTE: Speedometers in Canada have major scale in km/h, secondary in MPH and odometer in kilometres.

### Cutlass Ciera Power Teams

Engine	Ordering Code	Displacement (Cu. In.)	Engine Avail.	Automatic Transmission Availability	Computer Command Control System Option NBI
2.5 Litre 2-Bbl. L4 (A)	LW9	151	Std.	Std.	NA
2.8 Litre 2-Bbl. V6 (B)	LE2	173	EC	Std.	NA
3.0 Litre 2-Bbl. V6 (C)	LK9	181	EC	Std.	Req.
4.3 Litre Diesel V6 (D)	LT7	260	EC	Std.	NA

Std.—Standard EC—Optional at Extra Cost Req.—Required at Extra Cost NA—Not Available

(A) Produced by GM—Pontiac Motor Division, U.S.A.

(B) Produced by GM—Chevrolet Motor Division, U.S.A.

(C) Produced by GM—Buick Motor Division, U.S.A.

(D) Produced by GM—Oldsmobile Motor Division, U.S.A.

Caution: Use of leaded fuel will cause the Computer Command Control System to malfunction.

See your Oldsmobile salesperson for Transport Canada approved fuel consumption estimates for all Cutlass Ciera models.

### A WORD ABOUT ENGINES

Some Oldsmobiles are equipped with engines produced by other GM divisions, subsidiaries, or affiliated companies worldwide.

See your dealer for details.

# CUTLASS CIERA MAJOR STANDARD EQUIPMENT

	Ciera Coupe & Sedan	Ciera LS Coupe & Sedan	Ciera Brougham Coupe & Sedan
<b>EXTERIOR</b>			
Specific horizontal pattern grille	S	NA	NA
One-piece eggcrate design grille	NA	S	S
Front and rear bumpers, with resilient upper bumper facia	S	S	S
Stand-up hood ornament	NA	S	S
Hood centre moulding	NA	NA	S
Dual rectangular headlamps and bumper mounted park/turn lamps	S	S	S
Front and rear bumper mouldings	S	S	S
Bright roof drip mouldings	S	S	S
Black door frames	S	S	S
Bright belt reveal mouldings	S	S	S
Bright rocker panel mouldings	EC	S	S
Bright wheel opening mouldings	EC	S	S
Patch-style outside driver's side mirror	S	S	S
Fluidic windshield washer system	S	S	S
Bright wheel discs	S	S	S
Fixed mast antenna	S	S	S
<b>INTERIOR</b>			
Full bench seat	S	NA	NA
Custom sport bench seat with fold-down centre armrest	NA	S	NA
Divided front seat with dual controls	NA	NA	S
Full-foam cushion seat construction	S	S	S
Front and rear armrests	S	S	S
Side window defoggers	S	S	S
Cut-pile floor carpeting with carpeted lower door panels	S	S	S
Simulated butterfly walnut grain instrument panel	S	S	S
AM pushbutton radio with two front speakers	S	S	S
Day/night inside mirror	S	S	S
Deluxe front and rear seat belts	S	S	S
Headlamp-on warning buzzer	S	S	S
Automatic front door lamp switches	S	S	S
Dome lamp	S	S	S
Deluxe steering wheel	S	S	S
Cigar lighter	S	S	S

	Ciera Coupe & Sedan	Ciera LS Coupe & Sedan	Ciera Brougham Coupe & Sedan
<b>INTERIOR (continued)</b>			
Door pull handles	NA	S	S
Convenience Group, lamps, vanity mirror and chime tones	EC	EC	S
Dome and reading lamp	EC	EC	S
Inside hood release	S	S	S
<b>CHASSIS / MECHANICAL</b>			
Front-wheel drive	S	S	S
Power rack-and-pinion steering	S	S	S
Power front disc/rear drum brakes	S	S	S
Low-drag disc brakes	S	S	S
Disc brake audible wear sensors	S	S	S
MacPherson front strut suspension with coil springs and front stabilizer bar	S	S	S
Trailing arm rear suspension with equal stabilizer bar, coil springs and track bar	S	S	S
Full unitized body construction	S	S	S
3-section engine mounting cradle	S	S	S
P185/80R-13 glass-belted radial ply blackwall tires	S	S	S
Bolt-on front-end sheet metal	S	S	S
Double-panel door, hood and deck lid construction	S	S	S
Dual-mode flow-thru ventilation system	S	S	S
Delco Freedom II battery with sealed side terminals	S	S	S
Delcoltron generator with built-in solid-state regulator	S	S	S
High Energy Ignition system	S	S	S
Coolant recovery system	S	S	S
Easy roll tires and compact spare tire	S	S	S
Extensive anti-corrosion treatment	S	S	S
Long recommended service intervals for oil filter, spark plugs, chassis lubrication and automatic transmission fluid	S	S	S

S—Standard EC—Optional at Extra Cost NA—Not Available

## 1982 CUTLASS CIERA MODEL AVAILABILITY

Cutlass Ciera: 2-Door Coupe, 4-Door Sedan

Cutlass Ciera LS: 2-Door Coupe, 4-Door Sedan

Cutlass Ciera Brougham: 2-Door Coupe, 4-Door Sedan

## OPTIONS

Listed below are some of the available equipment choices to help you customize your 1982 Cutlass Ciera. For other optional equipment and their model availability see your Oldsmobile dealer.

6-way power seat adjuster (Bucket seat, driver's side) • 6-way power seat adjuster (Divided seat, driver's side, LS and Brougham) • Removable tempered glass sunroof • Reclining seat back, passenger side • Power door locks • Soft-Ray tinted glass • Power side windows • Power trunk lid lock release • Contour reclining front bucket seats • Body side mouldings • Landau padded vinyl roof cover (Coupe) • Full vinyl roof cover • Four-Season air conditioner • Electric rear window defogger • Cruise control with resume speed features • Sport console, with or without shifter • Simulated wire wheel discs with lock • Tungsten halogen hi-beam headlamps • Digital and regular quartz clocks • Firm ride and handling package • Automatic electric leveling system.

## EXTERIOR COLOURS

Choose from 12 high-lustre acrylic finishes or several available two-tone combinations. Colours: White, Silver Metallic, Light Blue Metallic, Dark Blue Metallic, Light Jadestone Metallic, Dark Jadestone Metallic, Sandstone Beige, Medium Sandstone Metallic, Light Redwood Metallic, Dark Redwood Metallic, Slate Gray, Charcoal Metallic.

## INTERIORS

Cutlass Ciera models are available in cloth, vinyl or leather trims. Depending on exterior colour and trim material selected, six interior colour choices are offered: Slate Gray, Dark Blue, Jadestone, Sandstone, Redwood and Doeskin.

## SAFETY FEATURES

**OCCUPANT PROTECTION:** Manual lap/shoulder belts with push-button buckles for driver and right front passenger (driver's side includes visual and audible warning system). Manual lap belts with push-button buckles for rear passengers positions. Energy-absorbing steering column. Passenger guard door locks. Safety-door latches and stamped steel hinges. Folding seat back latches. Energy-absorbing padded instrument panel and front seat back tops. Laminated windshield/tempered side and rear glass. Safety armrests. Identification symbols for controls and displays.

**ACCIDENT AVOIDANCE:** Side marker lights and reflectors. Parking lamps that illuminate with headlamps. Four-way hazard warning flasher. Backup lights. Lane change feature in direction signal control. Windshield defrosters, washer and dual speed wipers.

Vinyl-edged inside mirror. Outside rearview mirror. Dual master cylinderbrake system with warning light. Starter safety switch. Dual-action safety hood latches.

**ANTI-THEFT:** Audible anti-theft ignition key reminder. Anti-theft steering column lock. Inside hood release.

**A WORD ABOUT ASSEMBLY, COMPONENTS AND OPTIONAL EQUIPMENT IN THESE VEHICLES.** The vehicles described in this brochure are assembled at various Divisions of General Motors Corporation. These vehicles incorporate thousands of different components produced by General Motors of Canada Limited and related companies and their suppliers. From time to time during the manufacturing process, it may be necessary, in order to meet public demand for particular vehicles or equipment or to meet federally mandated emission and safety requirements or fuel economy guidelines, or for other reasons, to produce vehicles with different components or differently sourced components than initially scheduled. All such components have been approved for use in our products by General Motors of Canada Limited or related companies and will provide the quality performance associated with our name.

Please note that certain optional equipment can be ordered only in conjunction with other optional equipment. Also, upgrading from specified standard equipment may be necessary when certain optional equipment is ordered. Ask your sales representative for details.

With respect to extra cost optional equipment, make certain you specify the type of equipment you desire on your vehicle when ordering it from your dealer. Some options may be unavailable when your car is built. Your dealer receives advice regarding current availability of options. You may ask the dealer for this information. GM also requests the dealer to advise you if an option you ordered is unavailable. We suggest you verify that your car includes the optional equipment you ordered or, if there are changes, that they are acceptable to you.

All illustrations and specifications contained in this catalogue are based on the latest product information available at time of publication approval. The right is reserved to make changes at any time, without notice, in prices, colours, materials, equipment, specifications and models, and to discontinue models. Some of the equipment shown or described throughout this catalogue is available at extra cost. Check with your Oldsmobile dealer for complete information.

General Motors of Canada Limited,  
Oshawa, Ontario

Printed in Canada

January 1982